

West Florida Ministry Network 19 Day Prayer Guide



Dear Friends of Chi Alpha,

The document you have before you is the prayer guide targeted for the West Florida Ministry Network of the Assemblies of God (WFMN). The purpose of the prayer guide is simple. We want to put into as many hands as possible, tools to encourage and equip people to pray for college and universities across WFMN. It is our intention to provide every Assembly of God church in the USA, district by district, the opportunity and tools to pray for college students, staff and faculty.

We are praying for a move of God to shake our campuses, the likes of which we have not seen in our generation. We are believing for an out pouring of the Holy Spirit to grip the lives of men and women, young and old. Please believe with us as we move forward.

In this prayer guide, you will find statistics for each school as found on the website of the National Center for Education Statistics ([NCES](#)). (We did our best to weed-out schools belonging to the Peninsula Florida District.) We also tried to provide you with enough information to make your prayers more precise, without overwhelming you. For example, each school's page has information on the student population, housing, size, and leader of the institution.

Speaking of leaders, we also searched each school's website to find known Christian groups on campus. When possible, we have supplied the names of the individual students who are listed as the "first contact" of each group.

Some schools do not show student leader's names. When that happens, we have looked for the group's faculty advisor. That name appears and is so marked. Often, we could not find a contact person at all. When that happened, we inserted a question mark.

As you pray, please remember to pray for the students who live in student housing. You will notice that each school listed below will have a spot to show whether they have student housing or not. A lot of really crazy stuff happens in dorms, especially co-ed dorms!

There is a section on each page for recommended prayer requests. Please see this as springboard to prayer. Allow the Holy Spirit to lead you beyond what has been recommended.

We have included a section on international students. We are using the [College Factual](#) and ([NCES](#)).websites for all pertinent data. The international student information is under the "student Life" tab on the College Factual website and under enrollment dropdown at the NCES website.

Finally, we wanted to remind you that this prayer guide was compiled with data from the National Center for Education Statistics ([NCES](#)) as well as each school's individual website. We only included schools which grant at least a 2yr degree and had a student population of close to 200.

Thank you in advance, for investing time into this next generation. Only eternity will tell what we helped along and what we were able to hinder.

Be Blessed,
Joe and Heidi Barrale
[Assemblies of God U.S. Missionaries](#)
[Chi Alpha](#) / [Adopt-A-Campus.org](#)

A List of Schools Included in this Prayer Guide

Day 1 Big Bend Technical College

Day 2 Chipola College

Day 3 Emerald Coast Technical College

Day 4 Florida Agricultural and Mechanical University

Day 5 Florida Gateway College

Day 6 Florida Panhandle Technical College

Day 7 Florida State University

Day 8 Fortis Institute-Pensacola

Day 9 George Stone Technical College

Day 10 Gulf Coast State College

Day 11 North Florida College

Day 12 Northwest Florida State College

Day 13 Okaloosa Technical College

Day 14 Pensacola State College

Day 15 Radford M. Locklin Technical College

Day 16 Riveroak Technical College

Day 17 Tallahassee Community College

Day 18 The Baptist College of Florida

Day 19 The University of West Florida

Big Bend Technical College

Perry, FL

Director Jodi Tillman
Type 2-year Public
Campus Housing No
Student Population 227
Student-to-Faculty Ratio 14 to 1



This Campus Has NOT Been Adopted

Known Christian Groups on Campus:

No Known Gospel Witness

DAY

1



Mission Statement:

“The mission of Big Bend Technical College is to provide quality education and technical training that will empower each student to reach their potential.”

Prayer Requests:

- 1) Jesus said in Luke 10.2 “*The harvest is plentiful, but the laborers are few; therefore beseech the Lord of the harvest to send out laborers into His harvest.*”
- 2) Please pray for all Christians who may be on campus: staff, faculty, and administration.
- 3) Please pray for the power of the Holy Spirit to fall on campuses across the United States.
- 4) If Christians groups are present on campus, please pray that they will be bold in their witness, yet righteous in their conduct.
- 5) If international students are present on campus, please pray that they will have an encounter with Jesus.



Chipola College

Marianna, FL

President Sarah Clemmons
Type 4-year, Public
Campus Housing Yes
Student Population 1,826
Student-to-Faculty Ratio 18 to 1
There are approximately 18 international students at Chipola College; they make up 1.0% of all total students.



Prayer Requests:

- 1) Jesus said in Luke 10.2 *“The harvest is plentiful, but the laborers are few; therefore beseech the Lord of the harvest to send out laborers into His harvest.”*
- 2) Please pray for all Christians who may be on campus: staff, faculty, and administration.
- 3) Please pray for the power of the Holy Spirit to fall on campuses across the United States.
- 4) If Christians groups are present on campus, please pray that they will be bold in their witness, yet righteous in their conduct.
- 5) If international students are present on campus, please pray that they will have an encounter with Jesus.



This Campus Has NOT Been Adopted

Known Christian Groups on Campus:

Baptist Collegiate Ministry ?
Fellowship of Christian Athletes Darwin Gilmore (Advisor)

DAY
2



Mission Statement:

“Chipola College provides access to quality learning opportunities toward baccalaureate degrees, associate degrees, and certificates and facilitates the economic, social, and cultural development of the College’s service area.”



Emerald Coast Technical College

DeFuniak Springs, FL

Director/Principal Wyndy Crozier
Type..... 2-year, Public
Campus Housing No
Student Population 183
Student-to-Faculty Ratio 10 to 1



Prayer Requests:

- 1) Jesus said in Luke 10.2 *"The harvest is plentiful, but the laborers are few; therefore beseech the Lord of the harvest to send out laborers into His harvest."*
- 2) Please pray for all Christians who may be on campus: staff, faculty, and administration.
- 3) Please pray for the power of the Holy Spirit to fall on campuses across the United States.
- 4) If Christians groups are present on campus, please pray that they will be bold in their witness, yet righteous in their conduct.
- 5) If international students are present on campus, please pray that they will have an encounter with Jesus.



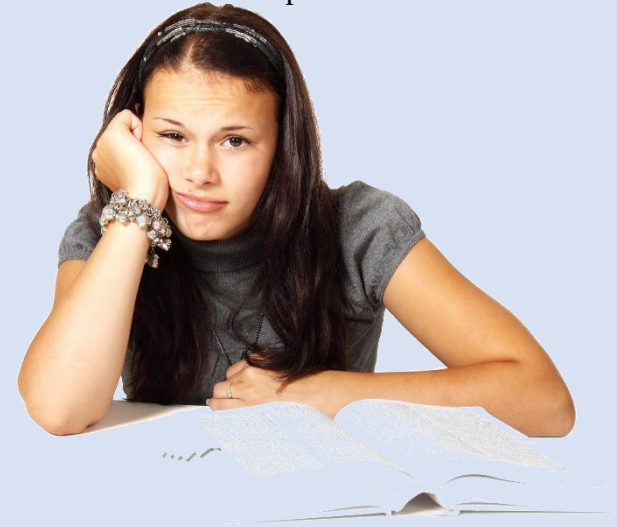
This Campus Has NOT Been Adopted

Known Christian Groups on Campus:

No Known Gospel Witness

DAY

3



Mission Statement:

"We prepare and empower today's students to meet the demands of an evolving and competitive global market."



Florida Agricultural and Mechanical University

Tallahassee, FL

President..... D. Larry Robinson
Type..... 4-year, Public
Campus Housing Yes
Student Population 9,215
Student-to-Faculty Ratio 14 to 1

International Students (2020)..... 84 from at least 21 Countries.

Bahamas, Bangladesh, Canada, China, Colombia, Ghana, India, Jamaica, Kenya, Netherlands, Nigeria, Peru, Saudi Arabia, Turkey, United Kingdom.



Prayer Requests:

- 1) Jesus said in Luke 10.2 *“The harvest is plentiful, but the laborers are few; therefore beseech the Lord of the harvest to send out laborers into His harvest.”*
- 2) Please pray for all Christians who may be on campus: staff, faculty, and administration.
- 3) Please pray for the power of the Holy Spirit to fall on campuses across the United States.
- 4) If Christians groups are present on campus, please pray that they will be bold in their witness, yet righteous in their conduct.
- 5) If international students are present on campus, please pray that they will have an encounter with Jesus.



This Campus Has NOT been Adopted

Known Christian Groups on Campus:

Baptist Collegiate Ministry Erika Willis
Christian Legal Society Eyesenia Reyes
Collegiate Advent Ministry..... Chelsea Bethel
Every Nation Campus Christin Lewis
Gospel Choir at FAMU..... John Harris Jr.
Impact Campus Ministry..... Rebekah Hill
InterVarsity Monica Hobbie
LCF on the Hill Charlene Howard
Loveworld Victor Adankai
Navigators Javon Thomas
Omega Fire Ministries Campus Fellowship Ivey Williams III



Mission Statement:

“Florida Agricultural and Mechanical University (FAMU) is an 1890 land grant, doctoral/research institution devoted to student success at the undergraduate, graduate, doctoral and professional levels. FAMU enhances the lives of its constituents and empowers communities through innovative teaching, research, scholarship, partnerships, and public service. The University continues its rich legacy and historic mission of educating African Americans and embraces all dimensions of diversity.”



DAY

4

Florida Gateway College
Lake City, FL

President Lawrence Barrett
Type 4-year, Public
Campus Housing Yes
Student Population 2,706
Student-to-Faculty Ratio 13 to 1



Prayer Requests:

- 1) Jesus said in Luke 10.2 *“The harvest is plentiful, but the laborers are few; therefore beseech the Lord of the harvest to send out laborers into His harvest.”*
- 2) Please pray for all Christians who may be on campus: staff, faculty, and administration.
- 3) Please pray for the power of the Holy Spirit to fall on campuses across the United States.
- 4) If Christians groups are present on campus, please pray that they will be bold in their witness, yet righteous in their conduct.
- 5) If international students are present on campus, please pray that they will have an encounter with Jesus.



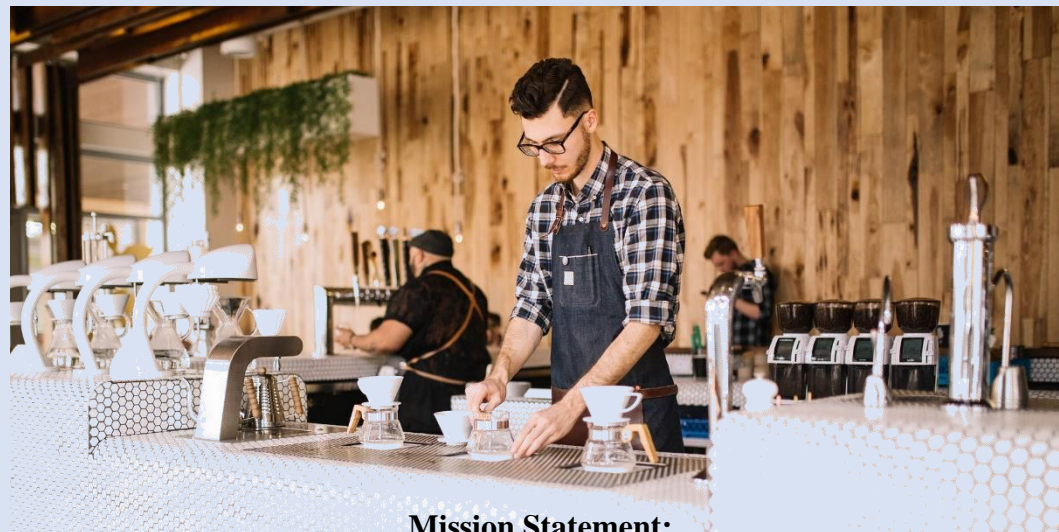
This Campus Has NOT Been Adopted

Known Christian Groups on Campus:

No Known Gospel Witness

DAY

5



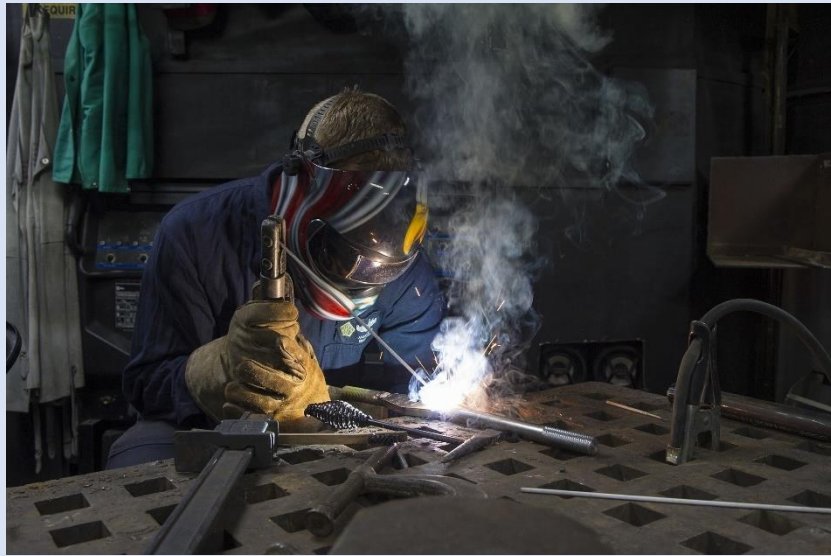
Mission Statement:

“The mission of Florida Gateway College is to provide superior instruction, nurture individual development, and enrich the diverse communities it serves through affordable, quality higher education programs and lifelong learning opportunities. Reaffirmed by the Board of Trustees on September 9, 2021.”

Florida Panhandle Technical College

Chipley, FL

Interim Director Bryan Lee
Type 2-year, Public
Campus Housing No
Student Population 307
Student-to-Faculty Ratio 10 to 1



Prayer Requests:

- 1) Jesus said in Luke 10.2 *"The harvest is plentiful, but the laborers are few; therefore beseech the Lord of the harvest to send out laborers into His harvest."*
- 2) Please pray for all Christians who may be on campus: staff, faculty, and administration.
- 3) Please pray for the power of the Holy Spirit to fall on campuses across the United States.
- 4) If Christians groups are present on campus, please pray that they will be bold in their witness, yet righteous in their conduct.
- 5) If international students are present on campus, please pray that they will have an encounter with Jesus.



This Campus Has Not Been Adopted
Known Christian Groups on Campus:
No Known Gospel Witness

DAY
6



Mission Statement:

"The mission of the Florida Panhandle Technical College is to provide students with instruction in academic and technical training at competency levels, or above those required for employment and advancement in existing or potential occupational fields."



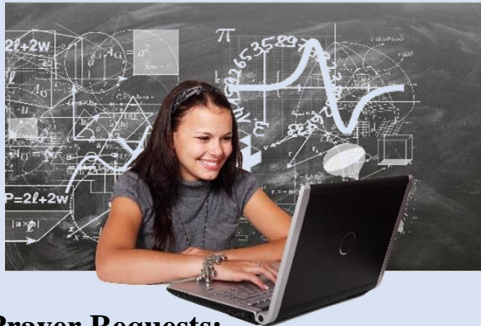
Florida State University

Tallahassee, FL



President Richard McCullough
 Type 4-year Public
 Campus Housing Yes
 Student Population..... 44,161
 Student-to-Faculty Ratio 17 to 1
International Students (2020) 1,721 from at least 50 Countries.

Australia, Bahamas, Bangladesh, Canada, China, Colombia, Ecuador, Egypt, France, Germany, Ghana, Greece, Hong Kong, India, Indonesia, Iran, Israel, Italy, Jamaica, Jordan, Kenya, Kuwait, Malaysia, Mexico, Nepal, Netherlands, Nigeria, Norway, Oman, Pakistan, Peru, Philippines, Russia, Saudi Arabia, Singapore, South Korea, Spain, Sri Lanka, Sweden, Taiwan, Thailand, Turkey, Ukraine, United Arab Emirates, United Kingdom, Venezuela, Vietnam.



Prayer Requests:

- 1) Jesus said in Luke 10.2 *"The harvest is plentiful, but the laborers are few; therefore beseech the Lord of the harvest to send out laborers into His harvest."*
- 2) Please pray for all Christians who may be on campus: staff, faculty, and administration.
- 3) Please pray for the power of the Holy Spirit to fall on campuses across the United States.
- 4) If Christians groups are present on campus, please pray that they will be bold in their witness, yet righteous in their conduct.
- 5) If international students are present on campus, please pray that they will have an encounter with Jesus.

This Campus Has NOT Been Adopted

Known Christian Groups on Campus:

Adventist Christian Fellowship Cindy Renelique
 Augustine Society..... Kole Resler
 Baptist Collegiate Ministry (Director)..... Barry Sproles
 Catholic Student Union (Chaplain) Fr. Tim Holeda
 Chapel of the Resurrection (Chaplain) Allen Hill
 Chi Alpha (Director)..... Anthony DeMoro
 Christian Campus Fellowship (Dir.)..... Kane Miller
 Christian Legal Society Benjamin Schafer
 Christian Medical Association Katelyn Cornelius
 Christians on Campus FSU Vineeta Deepthi Lnu
 Collegians For Christ..... Dean Michel
 Cru Chelsea Rivera
 Delta Alpha Chi Christian Sorority Mary Hanna
 Every Nation Campus (Campus Minister).... Sabrina Roc
 Fellowship of Christian Athletes Ryan Sprague
 InterVarsity Christian Fellowship
 (Campus Ministers) Michelle Brodeur
 Peter Lebhar
 Brian Eltomi
 Orthodox Christian Campus Ministries... Fr. Jerome Maximous
 Orthodox Christian Fellowship Fr. Robert O'Loughlin
 Pentecostal Student Union (Campus Minister)... Donte' Carter
 Ratio Christi FSU Scott Swanson
 Reach Campus Ministry Matthew Fantini
 Reformed University Fellowship (C. M.).... Kelly Jackson
 Seminole Christian Life (Pastor)..... Lee Gordon
 The Navigators Kyle Kozloski
 Wesley Foundation (Campus Minister)... Bryant Manning
 University Lutheran Church (Pastor) Jay Winters

Mission Statement:

"Florida State University preserves, expands, and disseminates knowledge in the sciences, technology, arts, humanities, and professions, while embracing a philosophy of learning strongly rooted in the traditions of the liberal arts. The university is dedicated to excellence in teaching, research, creative endeavors, and service. The university strives to instill the strength, skill, and character essential for lifelong learning, personal responsibility, and sustained achievement within a community that fosters free inquiry and embraces diversity."

Fortis Institute-Pensacola

Pensacola, FL

Vice President of Nursing Elaine Foster
Type..... 2-year, Private
Campus Housing No
Student Population 626
Student-to-Faculty Ratio 18 to 1



This Campus Has NOT Been Adopted

Known Christian Groups on Campus:

No Known Gospel Witness

DAY
8



About Fortis:

“Fortis is a post-secondary network of colleges and institutes that engages students in powerful learning and training experiences designed to develop professional skills and lifelong growth. We offer career-based training, diploma and degree-granting programs at 30 campuses in 14 states.”

Prayer Requests:

- 1) Jesus said in Luke 10.2 *“The harvest is plentiful, but the laborers are few; therefore beseech the Lord of the harvest to send out laborers into His harvest.”*
- 2) Please pray for all Christians who may be on campus: staff, faculty, and administration.
- 3) Please pray for the power of the Holy Spirit to fall on campuses across the United States.
- 4) If Christians groups are present on campus, please pray that they will be bold in their witness, yet righteous in their conduct.
- 5) If international students are present on campus, please pray that they will have an encounter with Jesus.



George Stone Technical College

Pensacola, FL

Principal Thomas Rollins
Type 2-year, Public
Campus Housing No
Student Population 663
Student-to-Faculty Ratio 24 to 1



Prayer Requests:

- 1) Jesus said in Luke 10.2 *“The harvest is plentiful, but the laborers are few; therefore beseech the Lord of the harvest to send out laborers into His harvest.”*
- 2) Please pray for all Christians who may be on campus: staff, faculty, and administration.
- 3) Please pray for the power of the Holy Spirit to fall on campuses across the United States.
- 4) If Christians groups are present on campus, please pray that they will be bold in their witness, yet righteous in their conduct.
- 5) If international students are present on campus, please pray that they will have an encounter with Jesus.



**This Campus Has NOT Been Adopted
Known Christian Groups on Campus:**

No Known Gospel Witness

DAY
9



Mission Statement:

“The mission of George Stone Technical College is to provide quality academic, career, and technical education opportunities for all learners through instruction that integrates rigor, relevance, and relationships.

The vision of George Stone Technical College is to serve the community as the premier provider of career and technical education by preparing individuals for rewarding careers and to provide businesses with a highly skilled workforce.”



Gulf Coast State College
Panama City, FL



President..... Glen McDonald
Type 4-year, Public
Campus Housing No
Student Population 4,694
Student-to-Faculty Ratio 19 to 1



Prayer Requests:

- 1) Jesus said in Luke 10.2 *“The harvest is plentiful, but the laborers are few; therefore beseech the Lord of the harvest to send out laborers into His harvest.”*
- 2) Please pray for all Christians who may be on campus: staff, faculty, and administration.
- 3) Please pray for the power of the Holy Spirit to fall on campuses across the United States.
- 4) If Christians groups are present on campus, please pray that they will be bold in their witness, yet righteous in their conduct.
- 5) If international students are present on campus, please pray that they will have an encounter with Jesus.

This Campus Has NOT Been Adopted
Known Christian Groups on Campus:
No Known Gospel Witness

DAY
10



Mission Statement:

“Gulf Coast State College holds students and community of central importance. The College provides many opportunities for learning and offers a range of programs and services to help students become well-educated, productive citizens. The College is equally dedicated to collaborating with the community to help create or improve economic well-being and to offer the space of the College for social dialog, events of art and culture and other moments that enhance our quality of life.”



North Florida College Madison, FL



President John Grosskopf
Type 4-year, Public
Campus Housing No
Student Population 1,127
Student-to-Faculty Ratio 20 to 1



Prayer Requests:

- 1) Jesus said in Luke 10.2 *“The harvest is plentiful, but the laborers are few; therefore beseech the Lord of the harvest to send out laborers into His harvest.”*
- 2) Please pray for all Christians who may be on campus: staff, faculty, and administration.
- 3) Please pray for the power of the Holy Spirit to fall on campuses across the United States.
- 4) If Christians groups are present on campus, please pray that they will be bold in their witness, yet righteous in their conduct.
- 5) If international students are present on campus, please pray that they will have an encounter with Jesus.

This Campus Has NOT Been Adopted

Known Christian Groups on Campus:

InterVarsity ?

DAY
11



Mission Statement:

“An exceptional college dedicated to an individualized and supportive academic atmosphere, accessible education, lifelong learning opportunities, and professional growth for our students and communities.”



Northwest Florida State College
Niceville, FL



President.....G. Devin Stephenson
Type4-year, Public
Campus Housing.....No
Student Population.....4,898
Student-to-Faculty Ratio.....21 to 1
There are approximately 38 international students at NWFSC; they make up 1.0% of all total students.



Prayer Requests:

- 1) Jesus said in Luke 10.2 *“The harvest is plentiful, but the laborers are few; therefore beseech the Lord of the harvest to send out laborers into His harvest.”*
- 2) Please pray for all Christians who may be on campus: staff, faculty, and administration.
- 3) Please pray for the power of the Holy Spirit to fall on campuses across the United States.
- 4) If Christians groups are present on campus, please pray that they will be bold in their witness, yet righteous in their conduct.
- 5) If international students are present on campus, please pray that they will have an encounter with Jesus.

This Campus Has NOT Been Adopted
Known Christian Groups on Campus:
No Known Gospel Witness

DAY
12



Mission Statement:

“To improve lives by providing a high-quality, globally competitive education that is a catalyst for cultural, civic, and economic development throughout the region.”



Okaloosa Technical College
Fort Walton Beach, FL



Director..... Jon Williams
Type..... 2-year, Public
Campus Housing No
Student Population 273
Student-to-Faculty Ratio 21 to 1



Prayer Requests:

- 1) Jesus said in Luke 10.2 *“The harvest is plentiful, but the laborers are few; therefore beseech the Lord of the harvest to send out laborers into His harvest.”*
- 2) Please pray for all Christians who may be on campus: staff, faculty, and administration.
- 3) Please pray for the power of the Holy Spirit to fall on campuses across the United States.
- 4) If Christians groups are present on campus, please pray that they will be bold in their witness, yet righteous in their conduct.
- 5) If international students are present on campus, please pray that they will have an encounter with Jesus.

This Campus Has NOT Been Adopted

Known Christian Groups on Campus:

No Known Gospel Witness

DAY
13



Mission Statement:

“Okaloosa Technical College will train students through a balance of theoretical and real world, project-based experience to meet the ever-changing professional needs of our local workforce.”



Pensacola State College
Pensacola, FL



This Campus Has NOT Been Adopted
Known Christian Groups on Campus:
Baptist Collegiate Ministries Kathy Schultz (Advisor)

DAY
14

President..... C. Edward Meadows
Type 4year, Public
Campus Housing No
Student Population 7,981
Student-to-Faculty Ratio 21 to 1
There are approximately 79 international students at Pensacola State College; they make up 1.0% of all total students.



Prayer Requests:

- 1) Jesus said in Luke 10.2 *“The harvest is plentiful, but the laborers are few; therefore beseech the Lord of the harvest to send out laborers into His harvest.”*
- 2) Please pray for all Christians who may be on campus: staff, faculty and administration.
- 3) Please pray for the power of the Holy Spirit to fall on campuses across the United States.
- 4) If Christians groups are present on campus, please pray that they will be bold in their witness, yet righteous in their conduct.
- 5) If international students are present on campus, please pray that they will have an encounter with Jesus.



Mission Statement:
“Pensacola State College, under the governance of a local Board of Trustees, is committed to providing quality, affordable, and accessible educational opportunities through a variety of delivery methods. The College, a member of the Florida College System, offers baccalaureate and associate degrees, workforce certificates, adult education, business and industry training, non-credit continuing education, community outreach, and cultural enrichment opportunities for students and the community.”

Radford M Locklin Technical College Milton, FL

DirectorKeith Hines
Type2-year, Public
Campus Housing.....No
Student Population.....425
Student-to-Faculty Ratio.....16 to 1



Prayer Requests:

- 1) Jesus said in Luke 10.2 *“The harvest is plentiful, but the laborers are few; therefore beseech the Lord of the harvest to send out laborers into His harvest.”*
- 2) Please pray for all Christians who may be on campus: staff, faculty, and administration.
- 3) Please pray for the power of the Holy Spirit to fall on campuses across the United States.
- 4) If Christians groups are present on campus, please pray that they will be bold in their witness, yet righteous in their conduct.
- 5) If international students are present on campus, please pray that they will have an encounter with Jesus.



This Campus Has NOT Been Adopted

Known Christian Groups on Campus:

No Known Gospel Witness

DAY
15



Mission Statement:

“The mission of Locklin Tech is to prepare students for current and emergent high demand careers through collaboration with community stakeholders. Expanding opportunities and access to training programs will provide a talent pipeline to meet regional workforce demands.”



Riveroak Technical College
Live Oak, FL



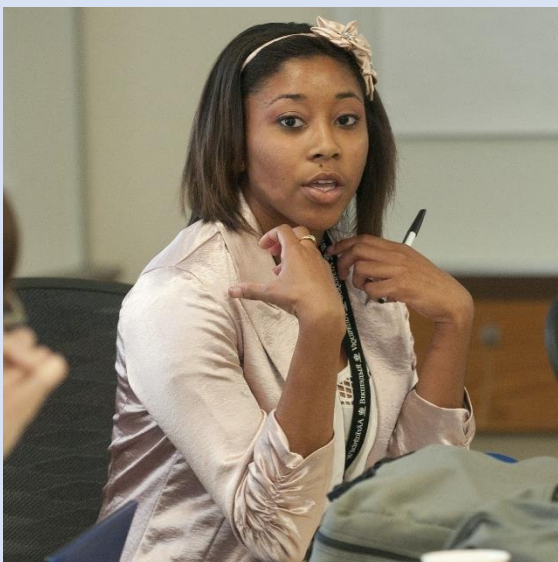
This Campus Has NOT Been Adopted

Known Christian Groups on Campus:

No Known Gospel Witness

DAY
16

Principal..... Mary Keen
Type..... 2-year, Public
Campus Housing No
Student Population..... 187
Student-to-Faculty Ratio 7 to 1



Mission Statement:

“Our mission at RIVEROAK Technical College is to provide opportunities for the development of qualified workers for the job market; to upgrade occupational skills to re-enter, maintain, or advance employment opportunities; and to enable students to become self-sufficient and self-confident, and to encourage students to become highly productive citizens with positive values and a strong work ethic.”

Prayer Requests:

- 1) Jesus said in Luke 10.2 *“The harvest is plentiful, but the laborers are few; therefore beseech the Lord of the harvest to send out laborers into His harvest.”*
- 2) Please pray for all Christians who may be on campus: staff, faculty, and administration.
- 3) Please pray for the power of the Holy Spirit to fall on campuses across the United States.
- 4) If Christians groups are present on campus, please pray that they will be bold in their witness, yet righteous in their conduct.
- 5) If international students are present on campus, please pray that they will have an encounter with Jesus.



Tallahassee Community College

Tallahassee, FL

President..... Jim Murdaugh
Type 4-year, Public
Campus Housing No
Student Population 11,266
Student-to-Faculty Ratio 23 to 1
There are approximately 225 [international](#) students at Tallahassee Community College; they make up 2.0% of all total students.



Prayer Requests:

- 1) Jesus said in Luke 10.2 *“The harvest is plentiful, but the laborers are few; therefore beseech the Lord of the harvest to send out laborers into His harvest.”*
- 2) Please pray for all Christians who may be on campus: staff, faculty, and administration.
- 3) Please pray for the power of the Holy Spirit to fall on campuses across the United States.
- 4) If Christians groups are present on campus, please pray that they will be bold in their witness, yet righteous in their conduct.
- 5) If international students are present on campus, please pray that they will have an encounter with Jesus.



This Campus Has NOT Been Adopted

Known Christian Groups on Campus:

No Known Gospel Witness

DAY
17



Mission Statement:

“The mission of the college is to provide a learning environment that prepares students for success in a global economy by offering higher education pathways, workforce opportunities, and civic engagement.”



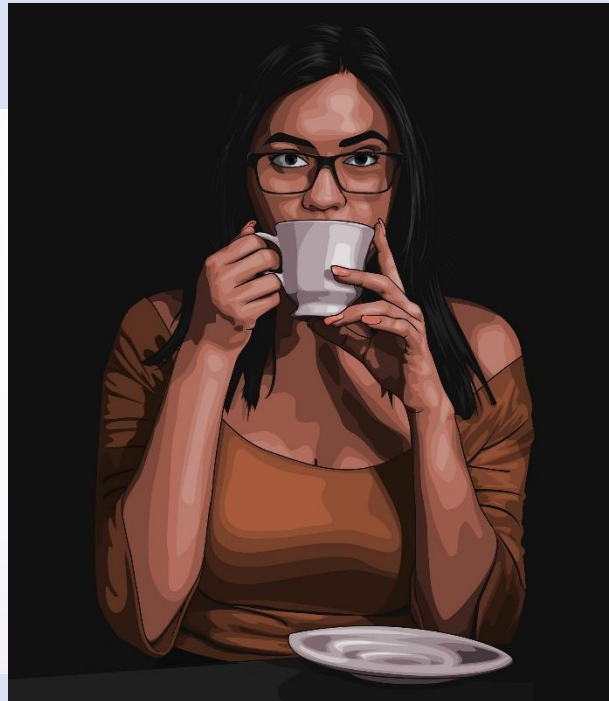
The Baptist College of Florida
Graceville, FL



This Campus Has NOT Been Adopted
Known Christian Groups on Campus:
Chapel

DAY
18

President..... Clayton P. Cloer
Type 4-year, Private Non-Profit
Campus Housing Yes
Student Population 410
Student-to-Faculty Ratio 8 to 1



Prayer Requests:

- 1) Jesus said in Luke 10.2 *“The harvest is plentiful, but the laborers are few; therefore beseech the Lord of the harvest to send out laborers into His harvest.”*
- 2) Please pray for all Christians who may be on campus: staff, faculty, and administration.
- 3) Please pray for the power of the Holy Spirit to fall on campuses across the United States.
- 4) If Christians groups are present on campus, please pray that they will be bold in their witness, yet righteous in their conduct.
- 5) If international students are present on campus, please pray that they will have an encounter with Jesus.



Mission Statement:
“The Baptist College of Florida shall operate within the confines of a Christian worldview to promote, provide for, operate and control a program of education and training for Christian leaders through awarding certificates and associate, baccalaureate, and graduate degrees in a co-educational post secondary setting.

To fulfill its mission, the college seeks to develop those qualities in students that contribute to effective ministry. In the area of personal growth, we seek to foster a desire for knowledge; develop cultural awareness by introducing students to a wide range of knowledge; nurture the ability to acquire, evaluate, assimilate, and use information; and promote personal and social maturity. For spiritual growth, we provide the resources for gaining biblical and religious data; we also assist students in learning and living the Christian life. In terms of professional growth, students are enabled to gain the credentials that enhance opportunities for ministry, and they learn to master a specialized body of knowledge.

At the same time, we encourage positive attitudes toward ministry and foster both an awareness of and a loyalty to the Southern Baptist heritage.”



The University of West Florida

Pensacola, FL



President..... Martha D. Saunders
Type..... 4-year, Public
Campus Housing Yes
Student Population 13,521
Student-to-Faculty Ratio 22 to 1
International Students (2020)..... 271 from at least 38 Countries.
Australia, Bahamas, Bangladesh, Brazil, Canada, China,
Colombia, Ecuador, Egypt, France, Germany, Ghana, India,
Indonesia, Italy, Jamaica, Japan, Jordan, Kuwait, Malaysia, Mexico,
Nigeria, Pakistan, Peru, Russia, Saudi Arabia, South Korea, Spain,
Sri Lanka, Sweden, Taiwan, Thailand, Turkey, Ukraine, United
Kingdom, Venezuela, Vietnam.



Prayer Requests:

- 1) Jesus said in Luke 10.2 *“The harvest is plentiful, but the laborers are few; therefore beseech the Lord of the harvest to send out laborers into His harvest.”*
- 2) Please pray for all Christians who may be on campus: staff, faculty, and administration.
- 3) Please pray for the power of the Holy Spirit to fall on campuses across the United States.
- 4) If Christians groups are present on campus, please pray that they will be bold in their witness, yet righteous in their conduct.
- 5) If international students are present on campus, please pray that they will have an encounter with Jesus.

This Campus Has NOT Been Adopted

Known Christian Groups on Campus:

This info is now private. This is a list from the last time

I was able to access the data bank.

Baptist Collegiate Ministries

Catholic Campus Ministries

Connect

Delight Ministries

Chi Alpha Mark Jakelsky

Fellowship of Christian Athletes

InterVarsity

The Difference

UWF and PSC Wesley Fellowship



Mission Statement:

“UWF delivers a learner-focused university education that enables students from varied backgrounds to meet their career and life goals. UWF research and community partnerships advance the body of knowledge and enhance the prosperity of the region and the state.”



DAY
19