

Peninsular Florida District Council of the A.G. 31 Day Prayer Guide



Volume II

Dear Friends of Collegiate Student Ministry,

You have before you Volume II of the Peninsular Florida District Council of the A.G. (PenFlorida) prayer guides. The purpose of these prayer guides is simple. We want to put into as many hands as possible, tools to encourage and equip people to pray for college and universities across PenFlorida. Ultimately, it is our intention to provide every Assembly of God church in the USA, district by district, the opportunity and tools to pray for college students, staff and faculty.

We are asking you to join us in praying for a move of God to shake our campuses, the likes of which we have not seen in our generation. We are believing for an out pouring of the Holy Spirit to grip the lives of men and women, young and old. Please believe with us as we move forward.

In these prayer guides, you will find statistics for each school in PenFlorida with a student population of over 300. The list is in alphabetical order and based on the information from the National Center for Education Statistics ([NCES](#)). We tried to provide you with enough information to make your prayers more precise, but not overwhelming. For example, each prayer guide has information on the known Christian groups on campus. When possible, we have supplied the names of the individual students who are listed as the “first contact” of each group.

Some schools do not show student leader’s names. When that happens, we have looked for the group’s faculty advisor. That name appears and is so marked. Often, we could not find a contact person at all. When that happened, we inserted a question mark.

Many schools have chaplains or spiritual life offices. Please pray for these men and women, that they too will be sensitive to the leading of the Holy Spirit. The Holy Spirit is not bound by denominations or back grounds. He is able to reach into the seeking heart.

As you pray, please remember to pray for the students who live in student housing. You will notice that each school listed below will have a spot to show whether they have student housing or not. A lot of really crazy stuff happens in dorms, especially co-ed dorms!

There is a section on each page titled prayer requests. Please see this as springboard to prayer. Allow the Holy Spirit to lead you beyond what has been recommended.

We have included a section on international students. We are using the [College Factual](#) website for all pertinent data. The international student information is under the “student Life” tab.

Finally, in addition to the data supplied from the National Center for Education Statistics ([NCES](#)), we have also accessed each school’s individual website. And, as mentioned earlier, we only included schools with a student population of over 300. But, each school listed does grant at least a 2yr Associate’s degree.

Thank you in advance, for investing time into this next generation. Only eternity will tell what we helped along and what we were able to hinder through our prayers.

Be Blessed,
Joe and Heidi Barrale
[Assemblies of God U.S. Missionaries](#)
[Chi Alpha](#) / [Adopt-A-Campus.org](#)

A List of Schools Included in this Prayer Guide

Day 1 Florida Career College-Margate

Day 2 Florida Career College-Miami

Day 3 Florida Career College-Orlando

Day 4 Florida Career College-Pembroke Pines

Day 5 Florida Career College-Tampa

Day 6 Florida Career College-West Palm Beach

Day 7 Florida College

Day 8 Florida Gateway College

Day 9 Florida Gulf Coast University

Day 10 Florida Institute of Technology

Day 11 Florida International University

Day 12 Florida Memorial University

Day 13 Florida National University-Main Campus

Day 14 Florida Polytechnic University

Day 15 Florida Southern College

Day 16 Florida SouthWestern State College

Day 17 Florida State College at Jacksonville

Day 18 Fortis College-Cutler Bay

Day 19 Fortis College-Orange Park

Day 20 Fortis Institute-Port Saint Lucie

Day 21 Full Sail University

Day 22 FVI School of Nursing and Technology

Day 23 Galen College of Nursing-Tampa Bay

Day 24 Gwinnett Institute

Day 25 HCI College

Day 26 Herzing University-Orlando

Day 27 Hillsborough Community College

Day 28 Hodges University

Day 29 Indian River State College

Day 30 Jacksonville University

Day 31 Jones Technical Institute

Florida Career College-Margate

Margate, FL

Regional Vice President Operations... Lynn Mulherin
Campus President/Executive Director... TBA
Type.....2-year Private For-Profit
Campus HousingNo
Student Population.....720
Student-to-Faculty Ratio15 to 1
International Students.....0



Prayer Requests:

1. Pray for “Student Club Elections” as they take place this spring. Normally colleges and universities elect their club officers before the summer break. Pray for spirit filled Christian leaders to emerge.
2. Ask God to send a student awakening to our university campuses.
3. Pray that the Holy Spirit will bring conviction of “sin, righteousness and judgment” (Jn 16.8).
4. Pray for the school administrators, staff and faculty.
5. Pray for local churches to be involved in the lives of students, especially the community campuses and schools in small towns.
6. Please pray according to **Luke 10.2** “*The harvest is plentiful, but the laborers are few; therefore, beseech the Lord of the harvest to send out laborers into His harvest.*”



This Campus Has NOT Been Adopted

Known Christian Groups on Campus:

No Known Gospel Witness

DAY

1



Mission Statement:

“Driving personal and community transformation by empowering students to make a positive and enduring life change.”



Florida Career College-Miami

Miami, FL



This Campus Has NOT Been Adopted

Known Christian Groups on Campus:

No Known Gospel Witness

DAY

2

Regional Vice President Operations...Lynn Mulherin Campus
President/Executive Director: Interim- Christopher Breeding
Type..... 2-year, Private For-Profit
Campus Housing No
Student Population 504
Student-to-Faculty Ratio 15 to 1
International Students..... 0



Mission Statement:

“Driving personal and community transformation by empowering students to make a positive and enduring life change.”

Prayer Requests:

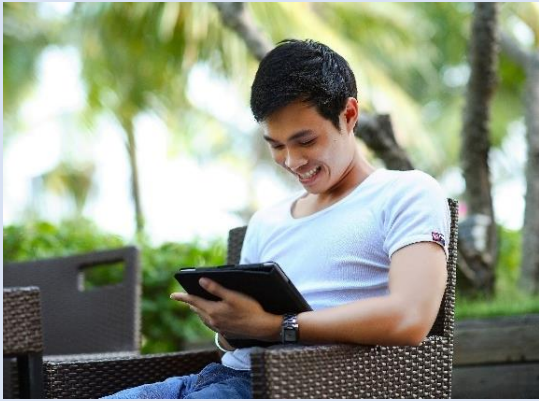
1. Pray for “Student Club Elections” as they take place this spring. Normally colleges and universities elect their club officers before the summer break. Pray for spirit filled Christian leaders to emerge.
2. Ask God to send a student awakening to our university campuses.
3. Pray that the Holy Spirit will bring conviction of “sin, righteousness and judgment” (Jn 16.8).
4. Pray for the school administrators, staff and faculty.
5. Pray for local churches to be involved in the lives of students, especially the community campuses and schools in small towns.
6. Please pray according to Luke 10.2 “The harvest is plentiful, but the laborers are few; therefore, beseech the Lord of the harvest to send out laborers into His harvest.”



Florida Career College-Orlando

Orlando, FL

Executive Director Milton Anderson
Regional Vice President of Operations... Tim Moscato
Type..... 2-year, Private For-Profit
Campus Housing No
Student Population 1,112
Student-to-Faculty Ratio 15 to 1
International Students..... 0



This Campus Has NOT Been Adopted

Known Christian Groups on Campus:

No Known Gospel Witness

DAY

3



Mission Statement:

“Driving personal and community transformation by empowering students to make a positive and enduring life change.”

Prayer Requests:

1. Pray for “Student Club Elections” as they take place this spring. Normally colleges and universities elect their club officers before the summer break. Pray for spirit filled Christian leaders to emerge.
2. Ask God to send a student awakening to our university campuses.
3. Pray that the Holy Spirit will bring conviction of “sin, righteousness and judgment” (Jn 16.8).
4. Pray for the school administrators, staff and faculty.
5. Pray for local churches to be involved in the lives of students, especially the community campuses and schools in small towns.
6. Please pray according to Luke 10.2 “The harvest is plentiful, but the laborers are few; therefore, beseech the Lord of the harvest to send out laborers into His harvest.”



Florida Career College-Pembroke Pines

Pembroke Pines, FL

Regional Vice President Operations...Lynn Mulherin
Campus President/Executive Director...Gregory Falcon
Type..... 2-year, Private For-Profit
Campus Housing No
Student Population 676
Student-to-Faculty Ratio 15 to 1
International Students..... 0



This Campus Has NOT been Adopted
Known Christian Groups on Campus:
No Known Gospel Witness

DAY
4



Mission Statement:

“Driving personal and community transformation by empowering students to make a positive and enduring life change.”

Prayer Requests:

1. Pray for “Student Club Elections” as they take place this spring. Normally colleges and universities elect their club officers before the summer break. Pray for spirit filled Christian leaders to emerge.
2. Ask God to send a student awakening to our university campuses.
3. Pray that the Holy Spirit will bring conviction of “sin, righteousness and judgment” (Jn 16.8).
4. Pray for the school administrators, staff and faculty.
5. Pray for local churches to be involved in the lives of students, especially the community campuses and schools in small towns.
6. Please pray according to Luke 10.2 “The harvest is plentiful, but the laborers are few; therefore, beseech the Lord of the harvest to send out laborers into His harvest.”



Florida Career College-Tampa

Tampa, FL



This Campus Has NOT Been Adopted

Known Christian Groups on Campus:

No Known Gospel Witness

DAY
5

Regional Vice President Operations...Tim Moscato
Campus President/Executive Director...James York
Type..... 2-year, Private For-Profit
Campus Housing No
Student Population 733
Student-to-Faculty Ratio 15 to 1
International Students..... 0



Mission Statement:

“Driving personal and community transformation by empowering students to make a positive and enduring life change.”

Prayer Requests:

1. Pray for “Student Club Elections” as they take place this spring. Normally colleges and universities elect their club officers before the summer break. Pray for spirit filled Christian leaders to emerge.
2. Ask God to send a student awakening to our university campuses.
3. Pray that the Holy Spirit will bring conviction of “sin, righteousness and judgment” (Jn 16.8).
4. Pray for the school administrators, staff and faculty.
5. Pray for local churches to be involved in the lives of students, especially the community campuses and schools in small towns.
6. Please pray according to Luke 10.2 “The harvest is plentiful, but the laborers are few; therefore, beseech the Lord of the harvest to send out laborers into His harvest.”



Florida Career College-West Palm Beach

West Palm Beach, FL



This Campus Has NOT Been Adopted

Known Christian Groups on Campus

No Known Gospel Witness

DAY
6

Campus President Georgianna Santofimio
Type 2-year, Private For-Profit
Campus Housing No
Student Population..... 869
Student-to-Faculty Ratio 15 to 1
International Students 0



Mission Statement:

“Driving personal and community transformation by empowering students to make a positive and enduring life change.”

Prayer Requests:

1. Pray for “Student Club Elections” as they take place this spring. Normally colleges and universities elect their club officers before the summer break. Pray for spirit filled Christian leaders to emerge.
2. Ask God to send a student awakening to our university campuses.
3. Pray that the Holy Spirit will bring conviction of “sin, righteousness and judgment” (Jn 16.8).
4. Pray for the school administrators, staff and faculty.
5. Pray for local churches to be involved in the lives of students, especially the community campuses and schools in small towns.
6. Please pray according to Luke 10.2 “The harvest is plentiful, but the laborers are few; therefore, beseech the Lord of the harvest to send out laborers into His harvest.”



Florida College

Temple Terrace, FL

President..... Buddy Payne
Type 4-year, Private Non-Profit
Campus Housing Yes
Student Population 488
Student-to-Faculty Ratio 11 to 1
“There are approximately 12 [international](#) students at Florida College; they make up 2.4% of all total students.”



This Campus Has Not Been Adopted

DAY

7

Known Christian Groups on Campus:

“Every weekday at 10:15 a.m., the students and faculty join in Hutchinson Auditorium for 20-30 minutes of song, prayer and biblical exhortation. It’s a time for us to encourage each other, be encouraged in our service to the Lord and begin the day focused on His will.”
Sower’s Club.....?



Mission Statement:

“Florida College, as a private, independent liberal arts college, provides a comprehensive college experience designed to develop students spiritually, mentally, physically, and socially; to integrate into the students’ lives the Bible as the revealed will of God; and to prepare students for lives of service to their Creator and to humanity.”

Prayer Requests:

1. Pray for “Student Club Elections” as they take place this spring. Normally colleges and universities elect their club officers before the summer break. Pray for spirit filled Christian leaders to emerge.
2. Ask God to send a student awakening to our university campuses.
3. Pray that the Holy Spirit will bring conviction of “sin, righteousness and judgment” (Jn 16.8).
4. Pray for the school administrators, staff and faculty.
5. Pray for local churches to be involved in the lives of students, especially the community campuses and schools in small towns.
6. Please pray according to Luke 10.2 “The harvest is plentiful, but the laborers are few; therefore, beseech the Lord of the harvest to send out laborers into His harvest.”



Florida Gateway College

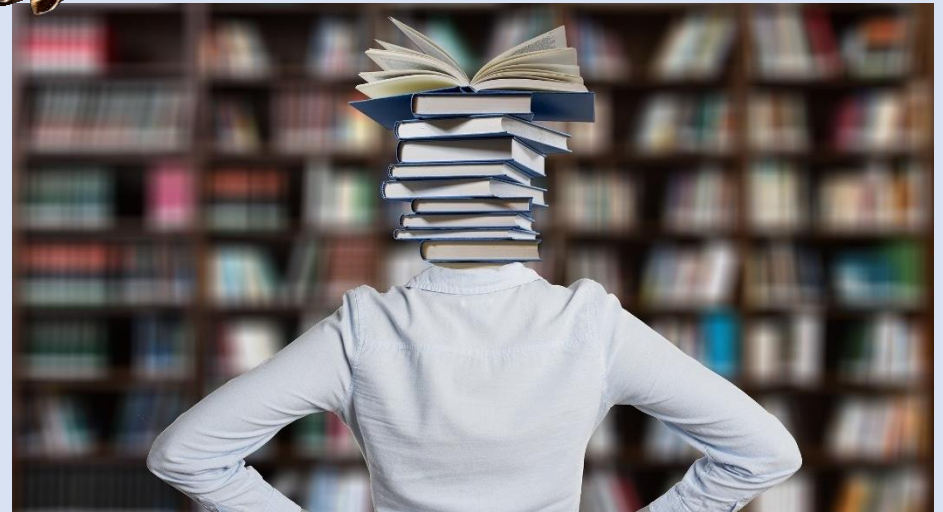
Lake City, FL

President..... Lawrence Barrett
Type 4-year Public
Campus Housing Yes
Student Population 3,018
Student-to-Faculty Ratio 15 to 1
International Students 0



This Campus Has NOT Been Adopted
Known Christian Groups on Campus:
No Known Gospel Witness

DAY
8



Mission Statement:

“The mission of Florida Gateway College is to provide superior instruction, nurture individual development, and enrich the diverse communities it serves through affordable, quality higher education programs and lifelong learning opportunities. Reaffirmed by the Board of Trustees on September 9, 2021.”

Prayer Requests:

1. Pray for “Student Club Elections” as they take place this spring. Normally colleges and universities elect their club officers before the summer break. Pray for spirit filled Christian leaders to emerge.
2. Ask God to send a student awakening to our university campuses.
3. Pray that the Holy Spirit will bring conviction of “sin, righteousness and judgment” (Jn 16.8).
4. Pray for the school administrators, staff and faculty.
5. Pray for local churches to be involved in the lives of students, especially the community campuses and schools in small towns.
6. Please pray according to Luke 10.2 “The harvest is plentiful, but the laborers are few; therefore, beseech the Lord of the harvest to send out laborers into His harvest.”



Florida Gulf Coast University

Fort Myers, FL

President..... Michael V. Martin
Type..... 4-year, Public
Campus Housing Yes
Student Population 15,358
Student-to-Faculty Ratio 22 to 1

International Students (2019)..... 302 from at least 30 Countries.

Australia, Bahamas, Bangladesh, Brazil, Canada, China, Colombia, Ecuador, France, Germany, Hong Kong, India, Italy, Jamaica, Japan, Kenya, Kuwait, Malaysia, Mexico, Norway, Peru, Singapore, South Korea, Spain, Sweden, Turkey, United Kingdom, Venezuela, Vietnam.



Prayer Requests:

1. Pray for “Student Club Elections” as they take place this spring. Normally colleges and universities elect their club officers before the summer break. Pray for spirit filled Christian leaders to emerge.
2. Ask God to send a student awakening to our university campuses.
3. Pray that the Holy Spirit will bring conviction of “sin, righteousness and judgment” (Jn 16.8).
4. Pray for the school administrators, staff and faculty.
5. Pray for local churches to be involved in the lives of students, especially the community campuses and schools in small towns.
6. Please pray according to Luke 10.2 “The harvest is plentiful, but the laborers are few; therefore, beseech the Lord of the harvest to send out laborers into His harvest.”



This Campus Has NOT Been Adopted

Known Christian Groups on Campus:

Catholic Student Organization Michael Marro III
Chi Alpha Campus Ministry Peyton Teders
Campus Pastor Christopher Wheeler
Campus Directors Taylor & Amy Kroeller
Campus Missionaries..... Brendan & Jessica Kirkland
Delight Ministries Brianna Casey
Enjoy U..... Eduardo Gomes
Fellowship of Christian Athletes... Monica Weber
FGCU Christians on Campus Joseline Trejos
Gulf Coast Wesley Foundation ... Thomas Iacvino
Impact Christian Campus Fellowship... Jairo Garcigo
InterVarsity Christian Fellowship... Rachel VanDenbergh
Next Level Young Adults..... Travis Seltzer
Orthodox Christian Fellowship ... John Stavropoulos
Ratio Christi..... Jake Rivera
Reformed University Fellowship... Lucas Tanner

DAY
9



Mission Statement:

“Florida Gulf Coast University, a comprehensive institution of higher education, offers undergraduate and graduate degree programs of strategic importance to Southwest Florida and beyond. FGCU seeks academic excellence in the development of selected programs and centers of distinction in science, technology, engineering and mathematics (STEM) disciplines, health professions, business, and marine and environmental sciences. Outstanding faculty and staff supported by a strong community of advisors prepare students for gainful employment and successful lives as responsible, productive and engaged citizens. FGCU emphasizes innovative, student-centered teaching and learning, promotes and practices environmental sustainability, embraces diversity, nurtures community partnerships, values public service, encourages civic responsibility, and cultivates habits of lifelong learning and the discovery of new knowledge.”

Florida Institute of Technology

Melbourne, FL

President.....T. Dwayne McCay
Type4-year, Private Non-Profit
Campus Housing.....Yes
Student Population.....6,775
Student-to-Faculty Ratio.....15 to 1
International Students (2019).....1,800 from at least 50 Countries.

Australia, Bahamas, Bangladesh, Brazil, Canada, China, Colombia, Ecuador, Egypt, France, Germany, Ghana, Greece, Hong Kong, India, Indonesia, Iran, Israel, Italy, Jamaica, Japan, Jordan, Kenya, Kuwait, Malaysia, Mexico, Mongolia, Nepal, Netherlands, Nigeria, Norway, Oman, Pakistan, Peru, Philippines, Russia, Saudi Arabia, Singapore, South Korea, Spain, Sri Lanka, Sweden, Taiwan, Thailand, Turkey, Ukraine, United Arab Emirates, United Kingdom, Venezuela, Vietnam.



Prayer Requests:

1. Pray for “Student Club Elections” as they take place this spring. Normally colleges and universities elect their club officers before the summer break. Pray for spirit filled Christian leaders to emerge.
2. Ask God to send a student awakening to our university campuses.
3. Pray that the Holy Spirit will bring conviction of “sin, righteousness and judgment” (Jn 16:8).
4. Pray for the school administrators, staff and faculty.
5. Pray for local churches to be involved in the lives of students, especially the community campuses and schools in small towns.
6. Please pray according to Luke 10:2 “The harvest is plentiful, but the laborers are few; therefore, beseech the Lord of the harvest to send out laborers into His harvest.”



This Campus Has NOT Been Adopted

Known Christian Groups on Campus:

First Love Church Godwyll Aikins
InterVarsity Steven Wyatt
Newman Club Jonathan Xavier



Mission Statement:

“Florida Institute of Technology’s mission is to provide high-quality education to a culturally diverse student body in order to prepare students for entering the global workforce, seeking higher-education opportunities and serving within their communities. The university also seeks to expand knowledge through basic and applied research and to serve the diverse economic, cultural and societal needs of our local, state, national and international constituencies.”



DAY
10

Florida International University

Miami, FL

Interim President.....Kenneth A. Jessell

Type4-year, Public

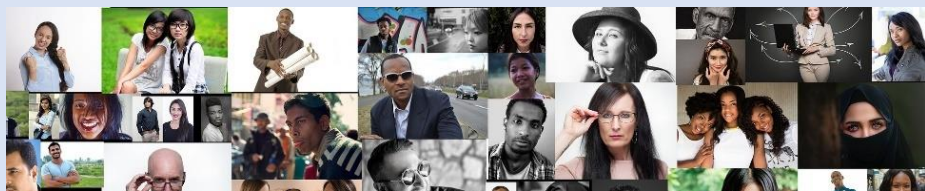
Campus Housing.....Yes

Student Population.....58,836

Student-to-Faculty Ratio.....25 to 1

International Students (2019).....4,396 from at least 47 Countries.

Australia, Bahamas, Bangladesh, Brazil, Canada, China, Colombia, Ecuador, Egypt, France, Germany, Ghana, Greece, Hong Kong, India, Indonesia, Iran, Israel, Italy, Jamaica, Japan, Jordan, Kenya, Kuwait, Mexico, Nepal, Netherlands, Nigeria, Norway, Oman, Pakistan, Peru, Philippines, Russia, Saudi Arabia, Singapore, South Korea, Spain, Sweden, Taiwan, Thailand, Turkey, Ukraine, United Arab Emirates, United Kingdom, Venezuela, Vietnam.



Prayer Requests:

1. Pray for “Student Club Elections” as they take place this spring. Normally colleges and universities elect their club officers before the summer break. Pray for spirit filled Christian leaders to emerge.
2. Ask God to send a student awakening to our university campuses.
3. Pray that the Holy Spirit will bring conviction of “sin, righteousness and judgment” (Jn 16.8).
4. Pray for the school administrators, staff and faculty.
5. Pray for local churches to be involved in the lives of students, especially the community campuses and schools in small towns.
6. Please pray according to Luke 10.2 “The harvest is plentiful, but the laborers are few; therefore, beseech the Lord of the harvest to send out laborers into His harvest.”



This Campus Has NOT Been Adopted

Known Christian Groups on Campus:

Baptist Collegiate Ministries.....John Carlos Mouw

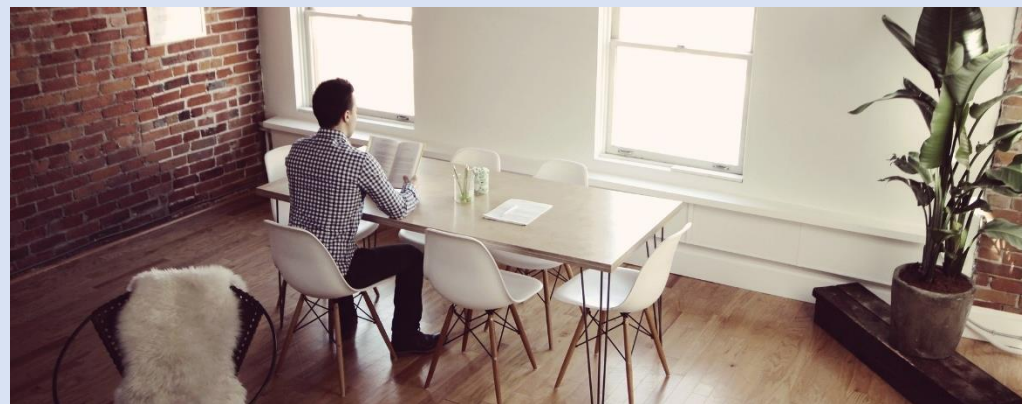
BBC Alpha OmegaDorien Grant

Chi AlphaPrachi Lalwani Mirchandani

Chinese Campus FellowshipShujia Mei

Christian on CampusTian Yu

Panther Christian LifeJuan Otero



Mission Statement:

“Florida International University is an urban, multi-campus, public research university serving its students and the diverse population of South Florida. We are committed to high-quality teaching, state-of-the-art research and creative activity, and collaborative engagement with our local and global communities.”



DAY
11

Florida Memorial University

Miami Gardens, FL

PresidentJaffus Hardrick
Type4-year, Private Non-Profit
Campus Housing.....Yes
Student Population.....928
Student-to-Faculty Ratio.....13 to 1

International Students (2019)192 from at least 14 Countries.

Bahamas, Brazil, Canada, Colombia, Ecuador, Greece, Italy, Jamaica, Mexico, Netherlands, Nigeria, Norway, United Kingdom, Venezuela.



Prayer Requests:

1. Pray for “Student Club Elections” as they take place this spring. Normally colleges and universities elect their club officers before the summer break. Pray for spirit filled Christian leaders to emerge.
2. Ask God to send a student awakening to our university campuses.
3. Pray that the Holy Spirit will bring conviction of “sin, righteousness and judgment” (Jn 16.8).
4. Pray for the school administrators, staff and faculty.
5. Pray for local churches to be involved in the lives of students, especially the community campuses and schools in small towns.
6. Please pray according to Luke 10.2 “The harvest is plentiful, but the laborers are few; therefore, beseech the Lord of the harvest to send out laborers into His harvest.”



This Campus Has NOT Been Adopted

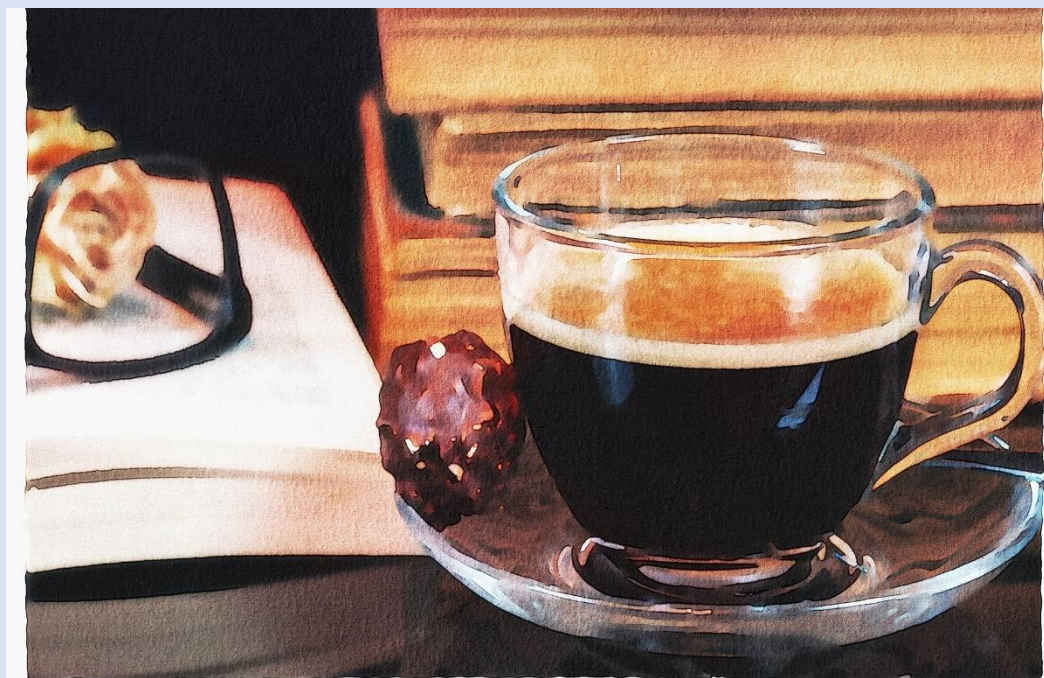
Known Christian Groups on Campus:

Campus Christian Ministries (Dean)Jeffrey Dean Swain
Gospel Choir.....?
Youth Alive Bible Club.....?



Missions Statement:

“The mission of Florida Memorial University is to instill in students the importance of becoming global citizens through life-long learning, leadership, character, and service, which will enhance their lives and the lives of others.”



DAY
12

Florida National University-Main Campus

Hialeah, FL



This Campus Has NOT Been Adopted

Known Christian Groups on Campus:

No Known Gospel Witness

DAY
13

President.....Maria Cristina Regueiro
Type4-year, Private For-Profit
Campus Housing.....No
Student Population.....4,173
Student-to-Faculty Ratio.....22 to 1

“There are approximately 538 [international](#) students at Florida National University - Main Campus; they make up 13.3% of all total students.”

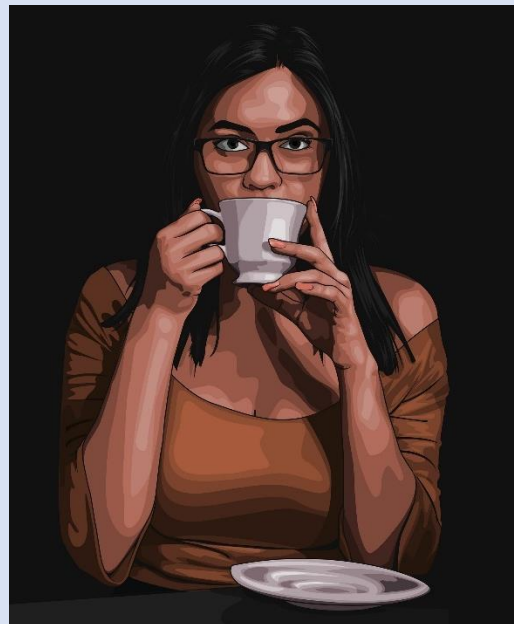
***Additional Location:**

Florida National University Training South Campus, Miami



Prayer Requests:

1. Pray for “Student Club Elections” as they take place this spring. Normally colleges and universities elect their club officers before the summer break. Pray for spirit filled Christian leaders to emerge.
2. Ask God to send a student awakening to our university campuses.
3. Pray that the Holy Spirit will bring conviction of “sin, righteousness and judgment” (Jn 16.8).
4. Pray for the school administrators, staff and faculty.
5. Pray for local churches to be involved in the lives of students, especially the community campuses and schools in small towns.
6. Please pray according to Luke 10.2 “The harvest is plentiful, but the laborers are few; therefore, beseech the Lord of the harvest to send out laborers into His harvest.”



Mission Statement:

“The purpose of Florida National University is to contribute to the education of a population of diverse, presently predominantly Hispanic, cultures. The University realizes this mission through the employment and development of a faculty of scholars who are proficient in the art of teaching. The University strives to prepare the students for employment in their chosen career or advanced studies through the acquisition of the required skills and knowledge needed for the successful completion of the program of studies...”

Florida Polytechnic University

Lakeland, FL

President Randy K. Avent
Type 4-year, Public
Campus Housing Yes
Student Population 1,422
Student-to-Faculty Ratio 16 to 1

“There are approximately 48 international students at Florida Polytechnic University; they make up 3.4% of all total students.”



Prayer Requests:

1. Pray for “Student Club Elections” as they take place this spring. Normally colleges and universities elect their club officers before the summer break. Pray for spirit filled Christian leaders to emerge.
2. Ask God to send a student awakening to our university campuses.
3. Pray that the Holy Spirit will bring conviction of “sin, righteousness and judgment” (Jn 16.8).
4. Pray for the school administrators, staff and faculty.
5. Pray for local churches to be involved in the lives of students, especially the community campuses and schools in small towns.
6. Please pray according to Luke 10.2 “The harvest is plentiful, but the laborers are few; therefore, beseech the Lord of the harvest to send out laborers into His harvest.”



This Campus Has NOT Been Adopted

Known Christian Groups on Campus:

Ablaze Braden Ireland

DAY
14



Mission Statement:

“Serve students and industry through excellence in education, discovery, and application of engineering and applied sciences.”



Florida Southern College

Lakeland, FL

President.....Anne B. Kerr
 Type4-year, Private Non-Profit
 Campus Housing.....Yes
 Student Population.....3,413
 Student-to-Faculty Ratio.....14 to1
International Students (2019).....92 from at least 30 Countries.

Bahamas, Brazil, Canada, China, Colombia, France, Germany, Ghana, Greece, India, Italy, Jamaica, Japan, Kenya, Mexico, Nigeria, Norway, Philippines, Russia, Saudi Arabia, South Korea, Spain, Sweden, Turkey, Ukraine, United Kingdom, Venezuela, Vietnam.



Prayer Requests:

1. Pray for “Student Club Elections” as they take place this spring. Normally colleges and universities elect their club officers before the summer break. Pray for spirit filled Christian leaders to emerge.
2. Ask God to send a student awakening to our university campuses.
3. Pray that the Holy Spirit will bring conviction of “sin, righteousness and judgment” (Jn 16.8).
4. Pray for the school administrators, staff and faculty.
5. Pray for local churches to be involved in the lives of students, especially the community campuses and schools in small towns.
6. Please pray according to Luke 10.2 “The harvest is plentiful, but the laborers are few; therefore, beseech the Lord of the harvest to send out laborers into His harvest.”



This Campus Has NOT Been Adopted Known Christian Groups on Campus:

Chaplain.....Timothy S. Wright
 Beyond.....Callahan Golden
 Catholic Student Organization.....Amalia Klim
 Delight MinistriesEmma Lytle
 Fellowship of Christian AthletesAndrew Williamson
 Men’s and Women’s Bible Studies ...Jessica Stalter
 Nurses Christian Fellowship.....Mary Kaleta
 Sandwich MinistriesElise Clements
 Upper Room Ministries?
 Wesley Fellowship.....Elisabeth Clarke



Mission Statement:

“The mission of Florida Southern is to empower students to make a positive and consequential impact on the world, and we know that the holistic, integrated experience that we provide can prepare you to do just that. The outstanding achievements of our alumni offer living proof.”



DAY
15

Florida SouthWestern State College

Fort Myers, FL

PresidentJeffery S. Allbritten

Type4-year, Public

Campus Housing.....Yes

Student Population.....15,141

Student-to-Faculty Ratio.....26 to 1

“There are approximately 379 international students at FSW; they make up 2.3% of all total students.”

***Additional Locations:**

Charlotte campus, Punta Gorda, FL

Collier Campus, Naples FL

Hendry Glades, LaBelle, FL

Corporate Training Center, Bonita Springs, FL



Prayer Requests:

1. Pray for “Student Club Elections” as they take place this spring. Normally colleges and universities elect their club officers before the summer break. Pray for spirit filled Christian leaders to emerge.
2. Ask God to send a student awakening to our university campuses.
3. Pray that the Holy Spirit will bring conviction of “sin, righteousness and judgment” (Jn 16.8).
4. Pray for the school administrators, staff and faculty.
5. Pray for local churches to be involved in the lives of students, especially the community campuses and schools in small towns.
6. Please pray according to Luke 10.2 “The harvest is plentiful, but the laborers are few; therefore, beseech the Lord of the harvest to send out laborers into His harvest.”



This Campus Has NOT Been Adopted

Known Christian Groups on Campus:

Chi Alpha (Campus Pastor)Christopher Wheeler

PresidentEmmericka Jean

InterVarsity (Campus Missionary).....Bill Harward

Collier Campus: Christian Fellowship Club....?

Charlotte Campus: Christian Club?



Mission Statement:

“The mission of Florida SouthWestern State College is to inspire learning; prepare a diverse population for creative and responsible participation in a global society; and serve as a leader for intellectual, economic, and cultural awareness in the community.”



DAY
16

Florida State College at Jacksonville

Jacksonville, FL

President.....John Avendano
Type4-year, Public
Campus Housing.....Yes
Student Population.....22,344
Student-to-Faculty Ratio.....23 to 1
“There are approximately 118 [international](#) students at Florida State College at Jacksonville; they make up 0.5% of all total students.”



Prayer Requests:

1. Pray for “Student Club Elections” as they take place this spring. Normally colleges and universities elect their club officers before the summer break. Pray for spirit filled Christian leaders to emerge.
2. Ask God to send a student awakening to our university campuses.
3. Pray that the Holy Spirit will bring conviction of “sin, righteousness and judgment” (Jn 16.8).
4. Pray for the school administrators, staff and faculty.
5. Pray for local churches to be involved in the lives of students, especially the community campuses and schools in small towns.
6. Please pray according to Luke 10.2 “The harvest is plentiful, but the laborers are few; therefore, beseech the Lord of the harvest to send out laborers into His harvest.”



This Campus Has NOT Been Adopted

Known Christian Groups on Campus:

Catholic BlueWave (Advisor).....Martha Garcia

DAY
17



Mission Statement:

“Florida State College at Jacksonville provides an equitable, high quality, success-driven learning experience for our diverse community of students.”



Fortis College-Cutler Bay

Cutler Bay, FL



This Campus Has NOT Been Adopted

Known Christian Groups on Campus:

No Known Gospel Witness

DAY
18

PresidentBruce A. Smith
Type2-year, Private For-Profit
Campus Housing.....No
Student Population.....388
Student-to-Faculty Ratio.....31 to 1
International Students0



Mission Statement:

“The programs at FORTIS College Cutler Bay are designed to assist students in enhancing their career opportunities and improving problem-solving abilities.”

Prayer Requests:

1. Pray for “Student Club Elections” as they take place this spring. Normally colleges and universities elect their club officers before the summer break. Pray for spirit filled Christian leaders to emerge.
2. Ask God to send a student awakening to our university campuses.
3. Pray that the Holy Spirit will bring conviction of “sin, righteousness and judgment” (Jn 16.8).
4. Pray for the school administrators, staff and faculty.
5. Pray for local churches to be involved in the lives of students, especially the community campuses and schools in small towns.
6. Please pray according to Luke 10.2 “The harvest is plentiful, but the laborers are few; therefore, beseech the Lord of the harvest to send out laborers into His harvest.”



Fortis College-Orange Park

Orange Park, FL



This Campus Has NOT Been Adopted

Known Christian Groups on Campus:

No Known Gospel Witness

DAY
19

President..... Ben Sedrine
Type..... 2-year, Private For-Profit
Campus Housing No
Student Population 489
Student-to-Faculty Ratio 31 to 1
International Students..... 0



Mission Statement:

“FORTIS College in Orange Park, FL provides career education and training to people in the Clay County, Florida.... FORTIS College is much more than the average career school in Florida. We value our contribution to Orange Park and the greater community and take our mission as educators to heart every day.”

Prayer Requests:

1. Pray for “Student Club Elections” as they take place this spring. Normally colleges and universities elect their club officers before the summer break. Pray for spirit filled Christian leaders to emerge.
2. Ask God to send a student awakening to our university campuses.
3. Pray that the Holy Spirit will bring conviction of “sin, righteousness and judgment” (Jn 16.8).
4. Pray for the school administrators, staff and faculty.
5. Pray for local churches to be involved in the lives of students, especially the community campuses and schools in small towns.
6. Please pray according to Luke 10.2 “The harvest is plentiful, but the laborers are few; therefore, beseech the Lord of the harvest to send out laborers into His harvest.”



Fortis Institute-Port Saint Lucie

Port Saint Lucie, FL



This Campus Has NOT Been Adopted

Known Christian Groups on Campus:
No Known Gospel Witness

DAY
20

President.....Niki Good
Type2-year, Private For-Profit
Campus Housing.....No
Student Population.....474
Student-to-Faculty Ratio.....24 to 1
International Students0



Mission Statement:

“Whether you are starting or changing careers, looking into FORTIS Institute is a smart move. Our healthcare school in Port St. Lucie prepares students for entry-level positions in several different careers and workplace settings.”

Prayer Requests:

1. Pray for “Student Club Elections” as they take place this spring. Normally colleges and universities elect their club officers before the summer break. Pray for spirit filled Christian leaders to emerge.
2. Ask God to send a student awakening to our university campuses.
3. Pray that the Holy Spirit will bring conviction of “sin, righteousness and judgment” (Jn 16.8).
4. Pray for the school administrators, staff and faculty.
5. Pray for local churches to be involved in the lives of students, especially the community campuses and schools in small towns.
6. Please pray according to Luke 10.2 “The harvest is plentiful, but the laborers are few; therefore, beseech the Lord of the harvest to send out laborers into His harvest.”



Full Sail University

Winter Park, FL



This Campus Has NOT Been Adopted

Known Christian Groups on Campus:

No Known Gospel Witness

DAY
21

President.....Garry Jones
Type4-year, Private For-Profit
Campus Housing.....No
Student Population.....24,627
Student-to-Faculty Ratio.....31 to 1
“There are approximately 110 international students at Full Sail University; they make up 0.5% of all total students.”



Mission Statement:

“Full Sail’s mission is to provide students with an innovative style of education, delivered by a staff of dedicated individuals, that addresses the career opportunities available in an ever-growing, constantly evolving industry. We do this by developing unique curricula that combine elements of creativity, art, business and life skills, technical prowess, and academic achievement. Our education is delivered via immersive teaching methods, both in Full Sail’s real-world production studios and classrooms, as well as through our online learning environment.”

Prayer Requests:

1. Pray for “Student Club Elections” as they take place this spring. Normally colleges and universities elect their club officers before the summer break. Pray for spirit filled Christian leaders to emerge.
2. Ask God to send a student awakening to our university campuses.
3. Pray that the Holy Spirit will bring conviction of “sin, righteousness and judgment” (Jn 16.8).
4. Pray for the school administrators, staff and faculty.
5. Pray for local churches to be involved in the lives of students, especially the community campuses and schools in small towns.
6. Please pray according to Luke 10.2 “The harvest is plentiful, but the laborers are few; therefore, beseech the Lord of the harvest to send out laborers into His harvest.”



FVI School of Nursing and Technology

Miami, FL

President..... Denyse Antunes
Type 2-year, Private For-Profit
Campus Housing..... No
Student Population 588
Student-to-Faculty Ratio..... 23 to 1
International Students 0



This Campus Has NOT Been Adopted

Known Christian Groups on Campus:

No Known Gospel Witness

DAY

22



Mission Statement:

“Florida Vocational Institute’s mission is to train students to become entry level professionals in high demand careers. We aim to improve employability and inspire life long career growth, thereby improving the life quality of individuals in our community.”

Prayer Requests:

1. Pray for “Student Club Elections” as they take place this spring. Normally colleges and universities elect their club officers before the summer break. Pray for spirit filled Christian leaders to emerge.
2. Ask God to send a student awakening to our university campuses.
3. Pray that the Holy Spirit will bring conviction of “sin, righteousness and judgment” (Jn 16.8).
4. Pray for the school administrators, staff and faculty.
5. Pray for local churches to be involved in the lives of students, especially the community campuses and schools in small towns.
6. Please pray according to Luke 10.2 “The harvest is plentiful, but the laborers are few; therefore, beseech the Lord of the harvest to send out laborers into His harvest.”



Galen College of Nursing-Tampa Bay

Saint Petersburg, FL

Campus Dean Glen Cornwall
Type..... 4-year, Private For-Profit
Campus Housing No
Student Population 2,296
Student-to-Faculty Ratio 14 to 1
International Students..... 0



Prayer Requests:

1. Pray for “Student Club Elections” as they take place this spring. Normally colleges and universities elect their club officers before the summer break. Pray for spirit filled Christian leaders to emerge.
2. Ask God to send a student awakening to our university campuses.
3. Pray that the Holy Spirit will bring conviction of “sin, righteousness and judgment” (Jn 16.8).
4. Pray for the school administrators, staff and faculty.
5. Pray for local churches to be involved in the lives of students, especially the community campuses and schools in small towns.
6. Please pray according to Luke 10.2 “The harvest is plentiful, but the laborers are few; therefore, beseech the Lord of the harvest to send out laborers into His harvest.”



This Campus Has NOT Been Adopted

Known Christian Groups on Campus:

No Known Gospel Witness

DAY
23



Mission Statement:

“Galen College of Nursing, driven by a culture dedicated to expanding access to nursing education, prepares diverse learners to demonstrate excellence and compassion in nursing through an educational approach immersed in innovation, technology, and student support.”



Gwinnett Institute Orlando, FL

President.....Michael Davis
Type2-year, Private For-Profit
Campus Housing.....No
Student Population.....508
Student-to-Faculty Ratio.....19 to 1
International Students0



This Campus Has NOT Been Adopted
Known Christian Groups on Campus:
No Known Gospel Witness

DAY
24



Mission Statement:

“Our mission is to provide career focused education for the purpose of gaining entry-level employment and advancement opportunities which will empower college students to positively contribute to their communities.”

Prayer Requests:

1. Pray for “Student Club Elections” as they take place this spring. Normally colleges and universities elect their club officers before the summer break. Pray for spirit filled Christian leaders to emerge.
2. Ask God to send a student awakening to our university campuses.
3. Pray that the Holy Spirit will bring conviction of “sin, righteousness and judgment” (Jn 16.8).
4. Pray for the school administrators, staff and faculty.
5. Pray for local churches to be involved in the lives of students, especially the community campuses and schools in small towns.
6. Please pray according to Luke 10.2 “The harvest is plentiful, but the laborers are few; therefore, beseech the Lord of the harvest to send out laborers into His harvest.”



HCI College West Palm Beach, FL

President & CEOPedro C. De Guzman
Type4-year, Private For-Profit
Campus Housing.....No
Student Population.....709
Student-to-Faculty Ratio.....7 to 1
International Students0

***Additional Location:**

Ft. Lauderdale, FL



This Campus Has NOT Been Adopted

Known Christian Groups on Campus:

No Known Gospel Witness

DAY
25



Mission Statement:

“The mission of HCI College is to provide education and training to students for a career in a variety of areas within the healthcare and technical fields, and to prepare them for employment in their chosen field that serves the community.”

Prayer Requests:

1. Pray for “Student Club Elections” as they take place this spring. Normally colleges and universities elect their club officers before the summer break. Pray for spirit filled Christian leaders to emerge.
2. Ask God to send a student awakening to our university campuses.
3. Pray that the Holy Spirit will bring conviction of “sin, righteousness and judgment” (Jn 16.8).
4. Pray for the school administrators, staff and faculty.
5. Pray for local churches to be involved in the lives of students, especially the community campuses and schools in small towns.
6. Please pray according to Luke 10.2 “The harvest is plentiful, but the laborers are few; therefore, beseech the Lord of the harvest to send out laborers into His harvest.”



Herzing University-Orlando

Winter Park, FL



This Campus Has NOT Been Adopted
Known Christian Groups on Campus:
No Known Gospel Witness

DAY
26

President..... Jeff Cross
Type..... 4-year, Private Non-Profit
Campus Housing No
Student Population 698
Student-to-Faculty Ratio..... 15 to 1
International Students..... 0



Mission Statement:

“To educate, support and empower all students for success in work, learning and engagement in our communities and global society.”

Prayer Requests:

1. Pray for “Student Club Elections” as they take place this spring. Normally colleges and universities elect their club officers before the summer break. Pray for spirit filled Christian leaders to emerge.
2. Ask God to send a student awakening to our university campuses.
3. Pray that the Holy Spirit will bring conviction of “sin, righteousness and judgment” (Jn 16.8).
4. Pray for the school administrators, staff and faculty.
5. Pray for local churches to be involved in the lives of students, especially the community campuses and schools in small towns.
6. Please pray according to Luke 10.2 “The harvest is plentiful, but the laborers are few; therefore, beseech the Lord of the harvest to send out laborers into His harvest.”



Hillsborough Community College

Tampa, FL



President Ken Atwater
 Type..... 2-year, Public
 Campus Housing Yes
 Student Population 19,532
 Student-to-Faculty Ratio 21 to 1
 “There are approximately 555 [international](#) students at Hillsborough Community College; they make up 2.4% of all total students.”

*Additional Locations:

Brandon Campus, Tampa, FL
 Dale Mabry Campus, Tampa, FL
 Plant City Campus, Plant City, FL
 SouthShore Campus, Ruskin, FL
 Ybor City Campus, Tampa, FL



Prayer Requests:

1. Pray for “Student Club Elections” as they take place this spring. Normally colleges and universities elect their club officers before the summer break. Pray for spirit-filled Christian leaders to emerge.
2. Ask God to send a student awakening to our university campuses.
3. Pray that the Holy Spirit will bring conviction of “sin, righteousness and judgment” (Jn 16.8).
4. Pray for the school administrators, staff and faculty.
5. Pray for local churches to be involved in the lives of students, especially the community campuses and schools in small towns.
6. Please pray according to Luke 10.2 “The harvest is plentiful, but the laborers are few; therefore, beseech the Lord of the harvest to send out laborers into His harvest.”

This Campus Has NOT Been Adopted

Known Christian Groups on Campus:

Brandon Campus
 InterVarsity (Advisors) Melissa Rios & Katie Bardsley
 CRU (Advisor) Shirley Dobbins
 Dale Mabry Campus
 InterVarsity (Advisor) Kathryn Smith
 New Image in Jesus (Advisor) Diane Grey
 Ybor City Campus
 InterVarsity (Advisor) Rose Ramsay



Mission Statement:

“To transform lives by providing open access to an exceptional teaching and learning environment that inspires students to contribute to the local community and global society.”



DAY
27

Hodges University

Fort Myers, FL

President John Meyer
Type 4-year, Private Non-Profit
Campus Housing No
Student Population 700
Student-to-Faculty Ratio 12 to 1
International Students 0



Prayer Requests:

1. Pray for “Student Club Elections” as they take place this spring. Normally colleges and universities elect their club officers before the summer break. Pray for spirit filled Christian leaders to emerge.
2. Ask God to send a student awakening to our university campuses.
3. Pray that the Holy Spirit will bring conviction of “sin, righteousness and judgment” (Jn 16.8).
4. Pray for the school administrators, staff and faculty.
5. Pray for local churches to be involved in the lives of students, especially the community campuses and schools in small towns.
6. Please pray according to Luke 10.2 “The harvest is plentiful, but the laborers are few; therefore, beseech the Lord of the harvest to send out laborers into His harvest.”



This Campus Has NOT Been Adopted

Known Christian Groups on Campus:

No Known Gospel Witness

DAY
28



Mission Statement:

“Hodges University—a private nonprofit institution—prepares students to leverage higher learning in their personal, professional, and civic endeavors.”



Indian River State College

Fort Pierce, FL

President Timothy Moore
Type 4-year, Public
Campus Housing No
Student Population 15,236
Student-to-Faculty Ratio 25 to 1
“There are approximately 144 [international](#) students at Indian River State College; they make up 0.9% of all total students.”

***Additional Locations:**

Chastain Campus, Stuart FL
Dixon Hendry Campus, Okeechobee, FL
Mueller Campus, Vero Beach, FL
Pruitt Campus, Port St. Lucie, FL



Prayer Requests:

1. Pray for “Student Club Elections” as they take place this spring. Normally colleges and universities elect their club officers before the summer break. Pray for spirit filled Christian leaders to emerge.
2. Ask God to send a student awakening to our university campuses.
3. Pray that the Holy Spirit will bring conviction of “sin, righteousness and judgment” (Jn 16.8).
4. Pray for the school administrators, staff and faculty.
5. Pray for local churches to be involved in the lives of students, especially the community campuses and schools in small towns.
6. Please pray according to Luke 10.2 “The harvest is plentiful, but the laborers are few; therefore, beseech the Lord of the harvest to send out laborers into His harvest.”



This Campus Has NOT Been Adopted

DAY
29

Known Christian Groups on Campus:

InterVarsity Douglas Wilberscheid (Advisor)
Coalition for Christian Outreach.... Scott Brewer (Advisor)



Mission Statement:

“As a leader in education and innovation, Indian River State College transforms lives by offering high-quality, affordable and accessible education to the residents of Indian River, Martin, Okeechobee, and St. Lucie counties through traditional and online delivery. IRSC is a comprehensive college accredited to award Baccalaureate Degrees, Associate Degrees, and Career and Technical Certificates.”



Jacksonville University Jacksonville, FL

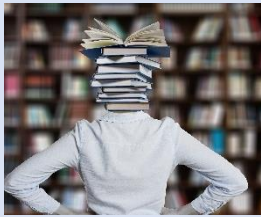
PresidentTim Cost
Type4-year, Private Not-Profit
Campus Housing.....Yes
Student Population.....4,053
Student-to-Faculty Ratio.....11 to 1

International Students (2019)294 from at least 32 Countries.

Australia, Bahamas, Brazil, Canada, China, Ecuador, France, Germany, Ghana, Hong Kong, India, Iran, Israel, Italy, Jamaica, Japan, Kenya, Malaysia, Mexico, Nigeria, Norway, Peru, Russia, Saudi Arabia, South Korea, Spain, Sweden, Taiwan, Thailand, United Kingdom, Venezuela, Vietnam.

***Additional Location:**

Palm Coast, FL



Prayer Requests:

1. Pray for “Student Club Elections” as they take place this spring. Normally colleges and universities elect their club officers before the summer break. Pray for spirit filled Christian leaders to emerge.
2. Ask God to send a student awakening to our university campuses.
3. Pray that the Holy Spirit will bring conviction of “sin, righteousness and judgment” (Jn 16.8).
4. Pray for the school administrators, staff and faculty.
5. Pray for local churches to be involved in the lives of students, especially the community campuses and schools in small towns.
6. Please pray according to Luke 10.2 “The harvest is plentiful, but the laborers are few; therefore, beseech the Lord of the harvest to send out laborers into His harvest.”



This Campus Has NOT Been Adopted

Known Christian Groups on Campus:

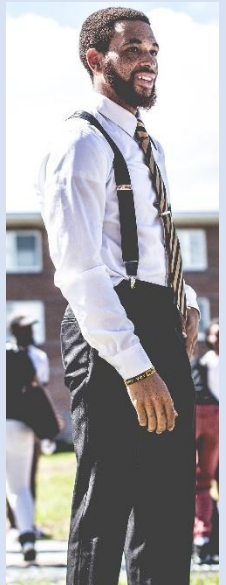
Beauty in Faith.....?
Campus Connection 838.....?
Campus Outreach.....?
Campus to City Wesley?
Catholic Dolphins?
Delight Ministries?
Elohim Academy?
Jax Baptist Collegiate Ministries?
Lifeline CMI?
Ratio Christi.....?



Mission Statement:

“Jacksonville University empowers students for life-long growth as global citizens through a transformative, innovative educational experience, built on excellence in community-centered service.”

DAY
30



Jones Technical Institute

Jacksonville, FL

President Gregory H. Jones
Type 2-year, Private Non-Profit
Campus Housing No
Student Population 376
Student-to-Faculty Ratio 16 to 1
International Students 0



This Campus Has NOT Been Adopted

Known Christian Groups on Campus:
No Known Gospel Witness

DAY
31



Mission Statement:

“The mission of Jones Technical Institute is to instill in every student, through a quality education and motivation, belief in themselves and their ability to succeed. Students set goals and objectives within their reach and with the technical knowledge and skills they acquire, our students can become successful in technical, trade, and vocational professions. J-Tech also aligns its mission with building partnerships within the industry and community to enhance its programs and opportunities for its students.”

Prayer Requests:

1. Pray for “Student Club Elections” as they take place this spring. Normally colleges and universities elect their club officers before the summer break. Pray for spirit filled Christian leaders to emerge.
2. Ask God to send a student awakening to our university campuses.
3. Pray that the Holy Spirit will bring conviction of “sin, righteousness and judgment” (Jn 16.8).
4. Pray for the school administrators, staff and faculty.
5. Pray for local churches to be involved in the lives of students, especially the community campuses and schools in small towns.
6. Please pray according to Luke 10.2 “The harvest is plentiful, but the laborers are few; therefore, beseech the Lord of the harvest to send out laborers into His harvest.”

