

# **Southern New England Ministry Network**

## **30 Day Prayer Guide**



**Volume IV**

Dear Friends of Missions,

Thank you for being part of this prayer initiative. Thank you for taking Jesus' request, that we should ask the Lord of the harvest for more workers, seriously. The field is ripe unto harvest. The university and college campuses need gospel workers and your prayers help make that happen.

The document you are reading is volume four in a five-volume prayer guide for the Southern New England (SNE) states of Connecticut, Rhode Island and Massachusetts. These prayer guides are meant to be a tool to help you pray more specifically for every school of higher education in SNE. It is our intention to provide every Assembly of God church the opportunity to pray for college students, staff and faculty.

We are praying for a move of God to shake our campuses, the likes of which we have not seen in our generation. We are believing for an out pouring of the Holy Spirit to grip the lives of men and women, young and old. Please believe with us as we move forward.

Once again, as in the other prayer guides, you will find statistics for each school. Just a little information to make your prayers more precise. Also, in this prayer guide you will find information on the known Christian groups on campus. When possible, I have supplied the names of the individuals who are leading those groups.

Some schools do not show student leader's names. When that happens, we have looked for the group's faculty advisor. That name appears and is so marked. Often, we could not find a contact person at all. When that happened, we inserted a question mark.

As the summer begins to wind down student groups all across the nation are making plans for their semester start-up. Many student groups will return to campus early for leadership training and strategic prayer initiatives of their own. Please pray for them as they strive to hear the voice of the Spirit for their particular campus.

Many schools have chaplains or spiritual life offices. Please pray for these men and women, that they too will be sensitive to the leading of the Holy Spirit. The Holy Spirit is not bound by denominations or back grounds. He is able to reach into the seeking heart.

Pray for the students who live in student housing. We have listed the schools which provide on campus housing. A lot of really crazy stuff happens in dorms, especially co-ed dorms!

Finally, we wanted to let you know that this prayer guide was compiled with data from the National Center for Education Statistics ([NCES](#)) as well as each school's individual website.

Once again, we have included a section on international students. We are using the [College Factual](#) website for all pertinent data.

Thank You again for investing time into this next generation. Only eternity will tell what we helped along and what we were able to hinder.

Be Blessed,  
Joe and Heidi Barrale  
[Assemblies of God U.S. Missionaries](#)  
[Chi Alpha](#) / [Adopt-A-Campus.org](#)

## A List of Schools Included in this Prayer Guide

Day 1 Harvard University

Day 2 Hebrew College

Day 3 Hellenic College-Holy Cross Greek Orthodox  
School of Theology

Day 4 Holyoke Community College

Day 5 Hult International Business School

Day 6 Laboure College

Day 7 Lasell University

Day 8 Lawrence Memorial Hospital School of Nursing

Day 9 Lesley University

Day 10 Longy School of Music of Bard College

Day 11 Massachusetts Bay Community College

Day 12 Massachusetts College of Art and Design

Day 13 Massachusetts College of Liberal Arts

Day 14 Massachusetts Maritime Academy

Day 15 Massachusetts School of Law

Day 16 Massasoit Community College

Day 17 MCPHS University

Day 18 Merrimack College

Day 19 MGH Institute of Health Professions

Day 20 Middlesex Community College

Day 21 Montserrat College of Art

Day 22 Mount Holyoke College

Day 23 Mount Wachusett Community College

Day 24 New England College of Optometry

Day 25 New England Law-Boston

Day 26 Nichols College

Day 27 North Shore Community College

Day 28 Northeastern University

Day 29 Northern Essex Community College

Day 30 Northpoint Bible College

# Harvard University Cambridge, MA

President..... Lawrence S. Bacow  
 Type..... 4-year Private Non-Profit  
 Campus Housing ..... Yes  
 Student Population ..... 31,655  
 Student-to-Faculty Ratio ..... 7 to 1  
International Students (2019)..... 7,224 from at least 50 Countries.

Australia, Bahamas, Bangladesh, Brazil, Canada, China, Colombia, Ecuador, Egypt, France, Germany, Ghana, Greece, Hong Kong, India, Indonesia, Iran, Israel, Italy, Jamaica, Japan, Jordan, Kenya, Kuwait, Malaysia, Mexico, Mongolia, Nepal, Netherlands, Nigeria, Norway, Oman, Pakistan, Peru, Philippines, Russia, Saudi Arabia, Singapore, South Korea, Spain, Sri Lanka, Sweden, Taiwan, Thailand, Turkey, Ukraine, United Arab Emirates, United Kingdom, Venezuela, Vietnam.

## **Mission Statement:**

“The mission of Harvard College is to educate the citizens and citizen-leaders for our society. We do this through our commitment to the transformative power of a liberal arts and sciences education...”

## **Prayer Request:**

- 1) Please pray Luke 10.2 with us: *“The harvest is plentiful, but the laborers are few; therefore, plead with the Lord of the harvest to send out laborers into His harvest.”* (NASB)
- 2) Pray that as this semester begins the Holy Spirit will be active on campus reminding people of all that Jesus has done in their lives.
- 3) Pray for the student groups as this semester gets started. The first several weeks are critical in finding new friends and reaching students for Christ.
- 4) Pray for a revival among the Christian students. Pray that the revival will spread to an awakening for the whole campus.
- 5) Please remember to pray for the international population on campus. Pray that they will experience all that God has for them while they are in the U.S.A.



## **This Campus Has NOT Been Adopted**

## **Known Christian Groups on Campus:**

### Chaplains:

Quakers ..... John Bach  
 InterVarsity ..... Jeff Banks  
 InterVarsity ..... Jeff Barneson  
 Orthodox ..... Vassilios Bebis  
 United Church of Christ ..... Karin Case  
 Southern Baptist ..... Dan Cho  
 Catholic ..... Fr. Patrick J. Fiorillo  
 Memorial Church (on campus)... Lara Glass  
 InterVarsity ..... David Heckendorn  
 Foursquare Church ..... Janelle Ibaven  
 Catholic Student Center ..... Fr. William T. Kelly  
 Southern Baptist ..... Rebekah Kim  
 Cru ..... Pat McLeod  
 Cru ..... Tammy McLeod  
 SNE Youth Conference ..... Endri Misho  
 Episcopal ..... Rita Powell  
 Lutheran ..... Kathleen O. Reed  
 Catholic (Grad School) ..... Fr. George Salzmann  
 American Baptist ..... Cody Sanders  
 Memorial Church (on campus)... Alanna Sullivan  
 United Methodist ..... Herb B. Taylor  
 InterVarsity ..... Sierra Thoreson  
 Reformed U. Fellowship ..... Michael Whitham  
 InterVarsity ..... Pete Williamson  
 InterVarsity (Business Sch.) ... Ryan Yi

### Student Groups:

Asian Baptist Student Koinonia... Yunchao Zhang  
 Catholic Student Association.. Adeline Martin  
 Christians on Campus ..... Moriah Lim  
 Harvard Christian Impact ..... Ruth Jaensubhakij  
 College Faith and Action ..... Caleb King  
 SoulFood Christian Fellowship... Ian Hayes  
 Undergrad Christian Fellowship... Mayowa Jolayemi  
 Harvard-Radcliffe Asian Christian Fellowship  
 ..... Jenna Bao  
 Orthodox Christian Fellowship... Katie Farkouth  
 Harvard Ichthus ..... Ali nor Manteau

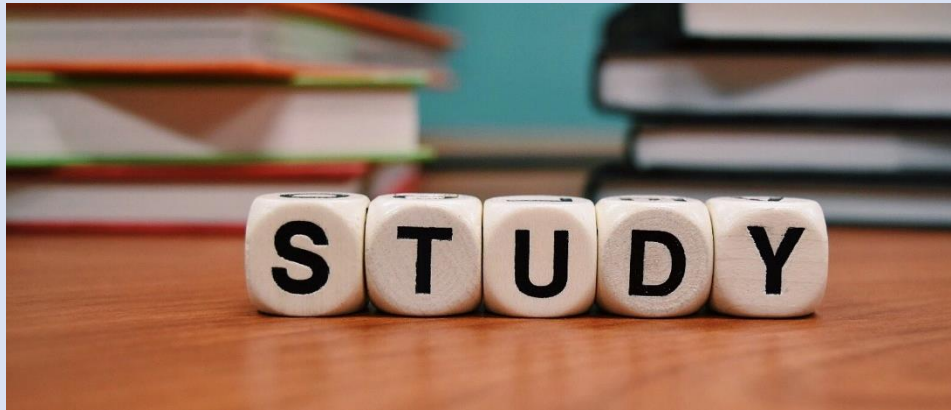
DAY  
1



# Hebrew College Newton Centre, MA



President..... Rabbi Sharon Cohen Anisfeld  
Type ..... 4-year, Private Non-Profit  
Campus Housing..... No  
Student Population ..... 167  
Student-to-Faculty Ratio..... 1 to 1  
“There are approximately 4 [international](#) students at Hebrew College;  
they make up 2.2% of all total students.”



## **Prayer Request:**

- 1) Please pray Luke 10.2 with us: *“The harvest is plentiful, but the laborers are few; therefore, plead with the Lord of the harvest to send out laborers into His harvest.”* (NASB)
- 2) Pray that as this semester begins the Holy Spirit will be active on campus reminding people of all that Jesus has done in their lives.
- 3) Pray for the student groups as this semester gets started. The first several weeks are critical in finding new friends and reaching students for Christ.
- 4) Pray for a revival among the Christian students. Pray that the revival will spread to an awakening for the whole campus.
- 5) Please remember to pray for the international population on campus. Pray that they will experience all that God has for them while they are in the U.S.A.

**This Campus Has NOT Been Adopted**

**Known Christian Groups on Campus:**  
No Known Gospel Witness

DAY  
2



## **Mission Statement:**

“Reimagining Jewish learning and leadership for an interconnected world. Making our lives more meaningful, our communities more vibrant, and our world more whole.”



# Hellenic College-Holy Cross Greek Orthodox School of Theology Brookline, MA



**This Campus Has NOT Been Adopted**

DAY  
3

## **Known Christian Groups on Campus:**

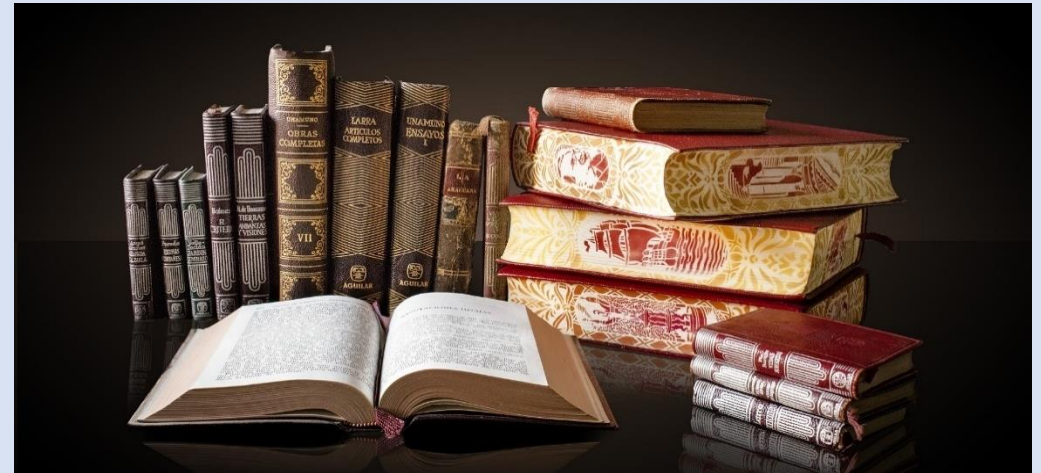
Holy Cross Chapel ..... Fr. Michael Kouremetis  
..... Fr. Christopher Flesoras

President ..... George M. Cantonis  
Type ..... 4-year, Private Non-Profit  
Campus Housing ..... Yes  
Student Population ..... 130  
Student-to-Faculty Ratio ..... 8 to 1



## **Prayer Request:**

- 1) Please pray Luke 10.2 with us: *“The harvest is plentiful, but the laborers are few; therefore, plead with the Lord of the harvest to send out laborers into His harvest.”* (NASB)
- 2) Pray that as this semester begins the Holy Spirit will be active on campus reminding people of all that Jesus has done in their lives.
- 3) Pray for the student groups as this semester gets started. The first several weeks are critical in finding new friends and reaching students for Christ.
- 4) Pray for a revival among the Christian students. Pray that the revival will spread to an awakening for the whole campus.
- 5) Please remember to pray for the international population on campus. Pray that they will experience all that God has for them while they are in the U.S.A.



## **Mission Statement:**

“To be the intellectual, educational and spiritual formation center of the Greek Orthodox Archdiocese of America, stimulating, developing, and sustaining ordained and lay vocations for service to Church and society, based on faith.”





# Holyoke Community College

## Holyoke, MA



**This Campus Has NOT been Adopted**

DAY  
4

### **Known Christian Groups on Campus:**

Christian Fellowship Club ..... Mayra Diaz (Advisor)

President ..... Christina Royal

Type ..... 2-year, Public

Campus Housing ..... No

Student Population ..... 4,849

Student-to-Faculty Ratio ..... 14 to 1

“There are approximately 38 international students at Holyoke Community College; they make up 0.7% of all total students.”



### **Prayer Request:**

1) Please pray Luke 10.2 with us: *“The harvest is plentiful, but the laborers are few; therefore, plead with the Lord of the harvest to send out laborers into His harvest.”* (NASB)

2) Pray that as this semester begins the Holy Spirit will be active on campus reminding people of all that Jesus has done in their lives.

3) Pray for the student groups as this semester gets started. The first several weeks are critical in finding new friends and reaching students for Christ.

4) Pray for a revival among the Christian students. Pray that the revival will spread to an awakening for the whole campus.

5) Please remember to pray for the international population on campus. Pray that they will experience all that God has for them while they are in the U.S.A.



### **Mission Statement:**

#### **“MISSION**

Educate. Inspire. Connect.

#### **VISION**

Holyoke Community College aspires to be a college of academic excellence known for helping students overcome barriers to success.”



# Hult International Business School

## Cambridge, MA

Founder & CEO..... Christopher Ahlberg  
Type..... 4-year, Private Non-Profit  
Campus Housing ..... Yes  
Student Population ..... 2,349  
Student-to-Faculty Ratio ..... 14 to 1  
“There are approximately 2,722 international students at Hult International Business School; they make up 88.8% of all total students.”

### \*Other Locations

Hult London,  
Hult New York,  
Hult San Francisco,  
Hult Dubai,  
Hult Shanghai



### Prayer Request:

1) Please pray Luke 10.2 with us: “*The harvest is plentiful, but the laborers are few; therefore, plead with the Lord of the harvest to send out laborers into His harvest.*” (NASB)

2) Pray that as this semester begins the Holy Spirit will be active on campus reminding people of all that Jesus has done in their lives.

3) Pray for the student groups as this semester gets started. The first several weeks are critical in finding new friends and reaching students for Christ.

4) Pray for a revival among the Christian students. Pray that the revival will spread to an awakening for the whole campus.

5) Please remember to pray for the international population on campus. Pray that they will experience all that God has for them while they are in the U.S.A.



**This Campus Has NOT Been Adopted**

**Known Christian Groups on Campus:**

No Known Gospel Witness

DAY

5



### **Mission Statement:**

“We strive to be the most relevant business school in the world.

By using our global reach and always being creative, entrepreneurial, and on the cutting edge, our aim is to have a positive impact on individuals and organizations by transforming their management practices. In so doing, we hope to be the business school of choice for existing and aspiring leaders. We will contribute to sustainable growth, helping leaders to integrate commercial success and societal well-being.”





# Laboure College

## Milton, MA

President..... Lily S. Hsu  
Type..... 4-year, Private Non-Profit  
Campus Housing ..... No  
Student Population ..... 988  
Student-to-Faculty Ratio ..... 9 to 1



### **Prayer Request:**

- 1) Please pray Luke 10.2 with us: *“The harvest is plentiful, but the laborers are few; therefore, plead with the Lord of the harvest to send out laborers into His harvest.”* (NASB)
- 2) Pray that as this semester begins the Holy Spirit will be active on campus reminding people of all that Jesus has done in their lives.
- 3) Pray for the student groups as this semester gets started. The first several weeks are critical in finding new friends and reaching students for Christ.
- 4) Pray for a revival among the Christian students. Pray that the revival will spread to an awakening for the whole campus.
- 5) Please remember to pray for the international population on campus. Pray that they will experience all that God has for them while they are in the U.S.A.



**This Campus Has NOT Been Adopted**

**Known Christian Groups on Campus:**

No Known Gospel Witness

DAY

6



### **Mission Statement:**

“The mission of Laboure College of Healthcare is to provide high quality education and to prepare women and men for careers in nursing and allied health fields. Inherent in the Catholic identity of the college and our educational mission is a commitment to Judeo-Christian principles which influence the academic curricula and the college environment. Consistent with these principles, the College seeks to give opportunities to a diverse population of students to continue their education as mature adults and responsible world citizens.”



# Lasell University

## Newton, MA

President..... Michael B. Alexander  
Type ..... 4-year, Private Non-Profit  
Campus Housing ..... Yes  
Student Population ..... 2,041  
Student-to-Faculty Ratio ..... 13 to 1  
International Students (2019)..... 146 from at least 28 Countries.  
Australia, Bangladesh, Brazil, China, Colombia, Ecuador, Egypt,  
Ghana, Greece, Hong Kong, India, Indonesia, Iran, Italy, Japan, Jordan,  
Mexico, Nepal, Nigeria, Russia, Saudi Arabia, South Korea, Spain,  
Taiwan, Thailand, Turkey, Ukraine, Venezuela, Vietnam.



### **Prayer Request:**

- 1) Please pray Luke 10.2 with us: *“The harvest is plentiful, but the laborers are few; therefore, plead with the Lord of the harvest to send out laborers into His harvest.”* (NASB)
- 2) Pray that as this semester begins the Holy Spirit will be active on campus reminding people of all that Jesus has done in their lives.
- 3) Pray for the student groups as this semester gets started. The first several weeks are critical in finding new friends and reaching students for Christ.
- 4) Pray for a revival among the Christian students. Pray that the revival will spread to an awakening for the whole campus.
- 5) Please remember to pray for the international population on campus. Pray that they will experience all that God has for them while they are in the U.S.A.



**This Campus Has Not Been Adopted**

**Known Christian Groups on Campus:**

Campus Crusade (Cru).....?  
Newman Society .....?

DAY

7



### **Mission Statement:**

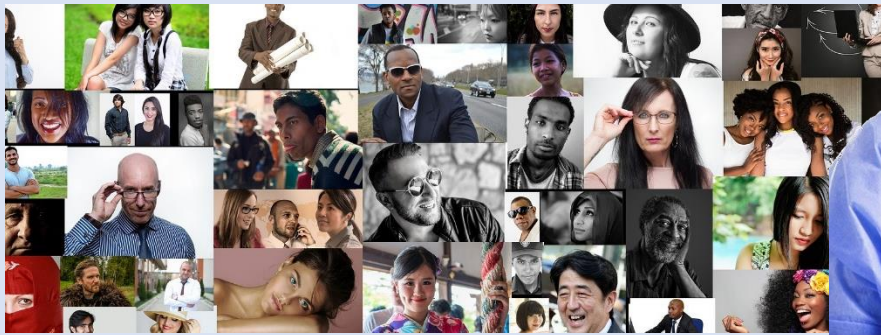
“We immerse students in experiential and collaborative learning that fosters lifelong intellectual exploration and social responsibility.”





# Lawrence Memorial Hospital School of Nursing Medford, MA

Vice President for Education..... Nancy Phoenix Bittner  
Type..... 2-year Private Non-Profit  
Campus Housing ..... No  
Student Population ..... 282  
Student-to-Faculty Ratio ..... 6 to 1  
“There are approximately 5 international students at Lawrence Memorial Hospital School of Nursing; they make up 1.8% of all total students.”



## Prayer Request:

- 1) Please pray Luke 10.2 with us: *“The harvest is plentiful, but the laborers are few; therefore, plead with the Lord of the harvest to send out laborers into His harvest.”* (NASB)
- 2) Pray that as this semester begins the Holy Spirit will be active on campus reminding people of all that Jesus has done in their lives.
- 3) Pray for the student groups as this semester gets started. The first several weeks are critical in finding new friends and reaching students for Christ.
- 4) Pray for a revival among the Christian students. Pray that the revival will spread to an awakening for the whole campus.
- 5) Please remember to pray for the international population on campus. Pray that they will experience all that God has for them while they are in the U.S.A.



**This Campus Has NOT Been Adopted**

**Known Christian Groups on Campus:**

No Known Gospel Witness

## **Mission Statement:**

“The associate of science in nursing degree program provides the foundation courses for individuals to pursue an associate of science in nursing. It prepares a beginning generalist practitioner who will assume the responsibilities of a professional nurse with commensurate knowledge, skills, and attitudes in a structured environment in a variety of primary, secondary and tertiary settings. The graduate is prepared as a provider of care, teacher, leader and manager for clients who have common, well- defined health problems. As an advocate, the graduate collaborates with other members of the health care team in designing comprehensive care for the client and family utilizing established research and valuing its influence on practice.”

DAY  
8





# Lesley University Cambridge, MA



**This Campus Has NOT Been Adopted**

**Known Christian Groups on Campus:**

Christian Fellowship ..... ?

DAY  
9

President ..... Janet L. Steinmayer  
Type ..... 4-year, Private Non-Profit  
Campus Housing ..... Yes  
Student Population ..... 4,510  
Student-to-Faculty Ratio ..... 10 to 1  
International Students (2019) ..... 174 from at least 31 Countries.

Australia, Brazil, Canada, China, Colombia, Egypt, France, Germany, Hong Kong, India, Iran, Israel, Italy, Japan, Malaysia, Mexico, Netherlands, Nigeria, Pakistan, Philippines, Russia, Saudi Arabia, Singapore South Korea, Spain, Taiwan, Turkey, United Arab Emirates, United Kingdom, Venezuela, Vietnam.



## **Prayer Request:**

1) Please pray Luke 10.2 with us: *“The harvest is plentiful, but the laborers are few; therefore, plead with the Lord of the harvest to send out laborers into His harvest.”* (NASB)

2) Pray that as this semester begins the Holy Spirit will be active on campus reminding people of all that Jesus has done in their lives.

3) Pray for the student groups as this semester gets started. The first several weeks are critical in finding new friends and reaching students for Christ.

4) Pray for a revival among the Christian students. Pray that the revival will spread to an awakening for the whole campus.

5) Please remember to pray for the international population on campus. Pray that they will experience all that God has for them while they are in the U.S.A.



## **Mission Statement:**

“Lesley University engages students in transformative education through active learning, scholarly research, diverse forms of artistic expression, and the integration of rigorous academics with practical, professional experience, leading to meaningful careers and continuing lifelong learning. Lesley prepares socially responsible graduates with the knowledge, skills, understanding, and ethical judgment to be catalysts shaping a more just, humane, and sustainable world”



# Longy School of Music of Bard College

## Cambridge, MA



**This Campus Has NOT Been Adopted**

**Known Christian Groups on Campus:**

No Known Gospel Witness

DAY  
10

President ..... Karen Zorn  
Type ..... 4-year, Private Non-Profit  
Campus Housing ..... No  
Student Population ..... 225  
Student-to-Faculty Ratio ..... 4 to 1  
“There are approximately 144 international students at Longy School of Music of Bard College; they make up 59.0% of all total students.”



### **Prayer Request:**

- 1) Please pray Luke 10.2 with us: *“The harvest is plentiful, but the laborers are few; therefore, plead with the Lord of the harvest to send out laborers into His harvest.”* (NASB)
- 2) Pray that as this semester begins the Holy Spirit will be active on campus reminding people of all that Jesus has done in their lives.
- 3) Pray for the student groups as this semester gets started. The first several weeks are critical in finding new friends and reaching students for Christ.
- 4) Pray for a revival among the Christian students. Pray that the revival will spread to an awakening for the whole campus.
- 5) Please remember to pray for the international population on campus. Pray that they will experience all that God has for them while they are in the U.S.A.



### **Mission Statement:**

“The world needs music now more than ever. At Longy, we prepare students to become exceptional musicians who can engage new audiences; teach anyone, anywhere; and use artistry to change lives in communities around the world.”





# Massachusetts Bay Community College

## Wellesley Hills, MA



This Campus Has NOT Been Adopted  
Known Christian Groups on Campus:  
No Known Gospel Witness

DAY  
11

President..... David Podell  
Type..... 2-year, Public  
Campus Housing ..... No  
Student Population ..... 4,048  
Student-to-Faculty Ratio ..... 14 to 1  
“There are approximately 72 international students at Massachusetts Bay Community College; they make up 1.6% of all total students.”



### Mission Statement:

“Massachusetts Bay Community College fosters educational excellence and student success, prepares students for local and global citizenship, anticipates and responds to the needs of surrounding communities, and contributes to evolving regional economic development.”

### Prayer Request:

- 1) Please pray Luke 10.2 with us: *“The harvest is plentiful, but the laborers are few; therefore, plead with the Lord of the harvest to send out laborers into His harvest.”* (NASB)
- 2) Pray that as this semester begins the Holy Spirit will be active on campus reminding people of all that Jesus has done in their lives.
- 3) Pray for the student groups as this semester gets started. The first several weeks are critical in finding new friends and reaching students for Christ.
- 4) Pray for a revival among the Christian students. Pray that the revival will spread to an awakening for the whole campus.
- 5) Please remember to pray for the international population on campus. Pray that they will experience all that God has for them while they are in the U.S.A.





# Massachusetts College of Art and Design Boston, MA

Acting President ..... Kymberly N. Pinder  
Type ..... 4-year, Public  
Campus Housing ..... Yes  
Student Population ..... 2,095  
Student-to-Faculty Ratio ..... 10 to 1

International Students (2019) ..... 118 from at least 29 Countries.

Australia, Brazil, China, Colombia, Ecuador, France, Ghana, Hong Kong, India, Indonesia, Iran, Japan, Malaysia, Mexico, Mongolia, Nigeria, Russia, Saudi Arabia, Singapore South Korea, Spain, Sri Lanka, Taiwan, Thailand, Turkey, Ukraine, United Kingdom, Venezuela, Vietnam.



## **Prayer Request:**

1) Please pray Luke 10.2 with us: *“The harvest is plentiful, but the laborers are few; therefore, plead with the Lord of the harvest to send out laborers into His harvest.”* (NASB)

2) Pray that as this semester begins the Holy Spirit will be active on campus reminding people of all that Jesus has done in their lives.

3) Pray for the student groups as this semester gets started. The first several weeks are critical in finding new friends and reaching students for Christ.

4) Pray for a revival among the Christian students. Pray that the revival will spread to an awakening for the whole campus.

5) Please remember to pray for the international population on campus. Pray that they will experience all that God has for them while they are in the U.S.A.



**This Campus Has NOT Been Adopted**

**Known Christian Groups on Campus:**

The Well .....?

DAY  
12



## **Mission Statement:**

“Massachusetts College of Art and Design is a public, independent institution that prepares artists, designers, and educators from diverse backgrounds to shape communities, economies, and cultures for the common good.”





# Massachusetts College of Liberal Arts

## North Adams, MA

President..... James F. Birge  
Type..... 4-year, Public  
Campus Housing ..... Yes  
Student Population ..... 1,507  
Student-to-Faculty Ratio ..... 11 to 1  
International Students (2019)..... 6 from at least 4 Countries.

Bahamas, China, Ghana, Ukraine

### \*Additional Campus

Pittsfield, MA



### Prayer Request:

1) Please pray Luke 10.2 with us: *“The harvest is plentiful, but the laborers are few; therefore, plead with the Lord of the harvest to send out laborers into His harvest.”* (NASB)

2) Pray that as this semester begins the Holy Spirit will be active on campus reminding people of all that Jesus has done in their lives.

3) Pray for the student groups as this semester gets started. The first several weeks are critical in finding new friends and reaching students for Christ.

4) Pray for a revival among the Christian students. Pray that the revival will spread to an awakening for the whole campus.

5) Please remember to pray for the international population on campus. Pray that they will experience all that God has for them while they are in the U.S.A.



**This Campus Has NOT Been Adopted**

**Known Christian Groups on Campus:**

Christian Fellowship..... ?

DAY  
13



### **Mission Statement:**

“Massachusetts College of Liberal Arts (MCLA) is the Commonwealth's public liberal arts college and a campus of the Massachusetts state university system. MCLA promotes excellence in learning and teaching, innovative scholarship, intellectual creativity, public service, applied knowledge, and active and responsible citizenship. MCLA prepares its graduates to be practical problem solvers and engaged, resilient global citizens.”



# Massachusetts Maritime Academy

## Buzzards Bay, MA

President (Rear Admiral, USMS) ..... Francis X. McDonald  
Type..... 4-year, Public  
Campus Housing ..... Yes  
Student Population ..... 1,792  
Student-to-Faculty Ratio. .... 15 to 1  
International Students (2019)..... 11 from at least 3 Countries.  
Germany, Mexico, Vietnam.



### **Prayer Request:**

- 1) Please pray Luke 10.2 with us: *“The harvest is plentiful, but the laborers are few; therefore, plead with the Lord of the harvest to send out laborers into His harvest.”* (NASB)
- 2) Pray that as this semester begins the Holy Spirit will be active on campus reminding people of all that Jesus has done in their lives.
- 3) Pray for the student groups as this semester gets started. The first several weeks are critical in finding new friends and reaching students for Christ.
- 4) Pray for a revival among the Christian students. Pray that the revival will spread to an awakening for the whole campus.
- 5) Please remember to pray for the international population on campus. Pray that they will experience all that God has for them while they are in the U.S.A.



**This Campus Has NOT Been Adopted**  
**Known Christian Groups on Campus:**  
No Known Gospel Witness

DAY  
14



### **Mission Statement:**

“The mission of the Massachusetts Maritime Academy is to provide a quality education for graduates serving in the merchant marine, the military services, and those who serve the interests of the Commonwealth, Nation and global marketplace. The Academy does so by combining a rigorous academic program with a regimented lifestyle that instills honor, responsibility, discipline, and leadership.”





# Massachusetts School of Law

## Andover, MA

Dean.....Michael L. Coyne  
Type.....4-year, Private Non-Profit  
Campus Housing.....No  
Student Population.....283  
Student-to-Faculty Ratio.....Not Available



### **Prayer Request:**

- 1) Please pray Luke 10.2 with us: *“The harvest is plentiful, but the laborers are few; therefore, plead with the Lord of the harvest to send out laborers into His harvest.”* (NASB)
- 2) Pray that as this semester begins the Holy Spirit will be active on campus reminding people of all that Jesus has done in their lives.
- 3) Pray for the student groups as this semester gets started. The first several weeks are critical in finding new friends and reaching students for Christ.
- 4) Pray for a revival among the Christian students. Pray that the revival will spread to an awakening for the whole campus.
- 5) Please remember to pray for the international population on campus. Pray that they will experience all that God has for them while they are in the U.S.A.



**This Campus Has NOT Been Adopted**

**Known Christian Groups on Campus:**

No Known Gospel Witness

DAY  
15

### **Mission Statement:**

“Massachusetts School of Law’s mission is to provide an academically rigorous affordable legal education emphasizing ethics, advocacy, leadership, and professional skills. MSLAW provides this accessible, affordable legal education to tomorrow’s leaders in law, business, and technology who seek to contribute to their communities as advocates, lawyers, and leaders. Lawyers have an outsized influence in our society and MSLAW prepares its graduates to use their skills to help their clients and achieve the societal advancement that a law degree has traditionally provided.”



# Massasoit Community College

## Brockton, MA



**This Campus Has NOT Been Adopted**

**Known Christian Groups on Campus:**

Moment of Truth Prayer Club...Glen Prospre (Advisor)

DAY  
16

President ..... Ray DiPasquale  
Type ..... 2-year, Public  
Campus Housing ..... No  
Student Population..... 6,637  
Student-to-Faculty Ratio ..... 17 to 1  
“There are approximately 28 international students at Massasoit Community College; they make up 0.4% of all total students.”

### **\*Additional Campus**

Canton, MA



### **Prayer Request:**

1) Please pray Luke 10.2 with us: “*The harvest is plentiful, but the laborers are few; therefore, plead with the Lord of the harvest to send out laborers into His harvest.*” (NASB)

2) Pray that as this semester begins the Holy Spirit will be active on campus reminding people of all that Jesus has done in their lives.

3) Pray for the student groups as this semester gets started. The first several weeks are critical in finding new friends and reaching students for Christ.

4) Pray for a revival among the Christian students. Pray that the revival will spread to an awakening for the whole campus.

5) Please remember to pray for the international population on campus. Pray that they will experience all that God has for them while they are in the U.S.A.



### **Mission Statement:**

“Massasoit Community College is a dynamic, diverse learning community that supports all students in their education, leading to a career, transfer to four-year institutions, and the pursuit of lifelong learning. Faculty and staff are committed to student success and strive to offer accessible and innovative programs with comprehensive support services to prepare students for membership in a global society.”



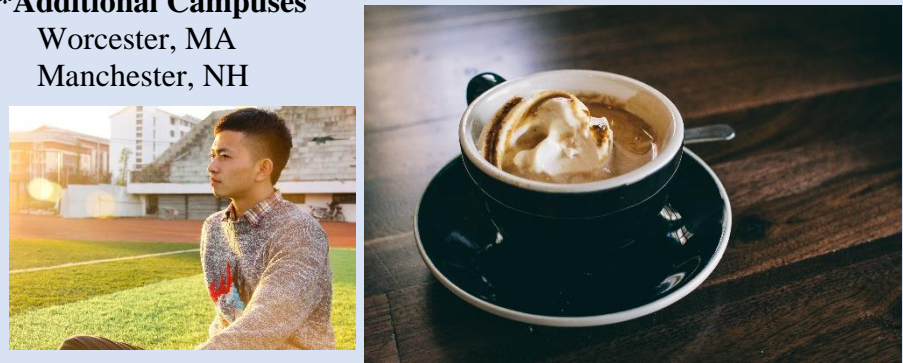


# Massachusetts College of Pharmacy and Health Sciences

## Boston, MA

President.....Richard J. Lessard  
Type .....4-year, Private Non-Profit  
Campus Housing.....Yes  
Student Population.....7,366  
Student-to-Faculty Ratio.....15 to 1  
“There are approximately 958 international students at MCPHS University; they make up 13.6% of all total students.”

**\*Additional Campuses**  
Worcester, MA  
Manchester, NH



**Prayer Request:**

- 1) Please pray Luke 10.2 with us: *“The harvest is plentiful, but the laborers are few; therefore, plead with the Lord of the harvest to send out laborers into His harvest.”* (NASB)
- 2) Pray that as this semester begins the Holy Spirit will be active on campus reminding people of all that Jesus has done in their lives.
- 3) Pray for the student groups as this semester gets started. The first several weeks are critical in finding new friends and reaching students for Christ.
- 4) Pray for a revival among the Christian students. Pray that the revival will spread to an awakening for the whole campus.
- 5) Please remember to pray for the international population on campus. Pray that they will experience all that God has for them while they are in the U.S.A.



**This Campus Has NOT Been Adopted**

**Known Christian Groups on Campus:**

This information was unavailable

DAY  
17



**Mission Statement:**

“MCPHS prepares graduates to advance health worldwide through excellence, innovation, and collaboration in teaching, practice, scholarship, and research and to transform the communities that they will serve.”





# Merrimack College North Andover, MA



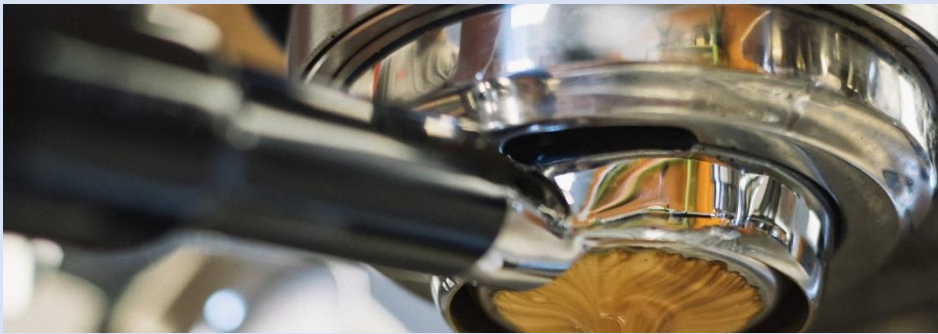
**This Campus Has NOT Been Adopted**

DAY  
18

## **Known Christian Groups on Campus:**

Vice President, Mission and Ministry .....Fr. Raymond Dlugos  
Campus Minister (Service and Social Justice)  
.....Nicole Benevenia  
Campus Minister (Spiritual Development)  
.....Nicholas DiSalvatore

President .....Christopher H. Hopey  
Type .....4-year, Private Non-Profit  
Campus Housing.....Yes  
Student Population.....5,186  
Student-to-Faculty Ratio.....15 to 1  
International Students (2019) .....116 from at least 29 Countries.  
Brazil, Canada, China, Columbia, Germany, Greece, India, Italy, Kuwait,  
Mexico, Nigeria, Norway, Russia, Saudi Arabia, South Korea, Sweden,  
Taiwan, Turkey, United Kingdom, Venezuela, Vietnam.



## **Prayer Request:**

- 1) Please pray Luke 10.2 with us: *“The harvest is plentiful, but the laborers are few; therefore, plead with the Lord of the harvest to send out laborers into His harvest.”* (NASB)
- 2) Pray that as this semester begins the Holy Spirit will be active on campus reminding people of all that Jesus has done in their lives.
- 3) Pray for the student groups as this semester gets started. The first several weeks are critical in finding new friends and reaching students for Christ.
- 4) Pray for a revival among the Christian students. Pray that the revival will spread to an awakening for the whole campus.
- 5) Please remember to pray for the international population on campus. Pray that they will experience all that God has for them while they are in the U.S.A.



## **Mission Statement:**

“Our mission is to enlighten minds, engage hearts and empower lives. Inspired by the Catholic faith and the Augustinian tradition of seeking truth through inquiry and dialogue...”



# MGH Institute of Health Professions Boston, MA

President..... Paula Milone-Nuzzo  
Type..... 4-year, Private Non-Profit  
Campus Housing ..... No  
Student Population ..... 1,199  
Student-to-Faculty Ratio ..... 10 to 1



## **Prayer Request:**

1) Please pray Luke 10.2 with us: *“The harvest is plentiful, but the laborers are few; therefore, plead with the Lord of the harvest to send out laborers into His harvest.”* (NASB)

2) Pray that as this semester begins the Holy Spirit will be active on campus reminding people of all that Jesus has done in their lives.

3) Pray for the student groups as this semester gets started. The first several weeks are critical in finding new friends and reaching students for Christ.

4) Pray for a revival among the Christian students. Pray that the revival will spread to an awakening for the whole campus.

5) Please remember to pray for the international population on campus. Pray that they will experience all that God has for them while they are in the U.S.A.



**This Campus Has NOT Been Adopted**

**Known Christian Groups on Campus:**

No Known Gospel Witness

DAY  
19



## **Mission Statement:**

“As an independent, interprofessional graduate school of health sciences, MGH Institute of Health Professions prepares health professionals and scientists to advance care for a diverse society through leadership in education, clinical practice, research, and community engagement.”





# Middlesex Community College

## Bedford, MA



**This Campus Has NOT Been Adopted**

**Known Christian Groups on Campus:**

Bible Study (Lowell) ..... Mateo Montoya Lopez

DAY  
20

President ..... Phil Sisson  
Type ..... 2-year, Public  
Campus Housing ..... No  
Student Population ..... 7,569  
Student-to-Faculty Ratio ..... 18 to 1  
“There are approximately 154 international students at Middlesex Community College; they make up 1.9% of all total students.”

### **\*Additional Campus**

Lowell, MA



### **Prayer Request:**

1) Please pray Luke 10.2 with us: “*The harvest is plentiful, but the laborers are few; therefore, plead with the Lord of the harvest to send out laborers into His harvest.*” (NASB)

2) Pray that as this semester begins the Holy Spirit will be active on campus reminding people of all that Jesus has done in their lives.

3) Pray for the student groups as this semester gets started. The first several weeks are critical in finding new friends and reaching students for Christ.

4) Pray for a revival among the Christian students. Pray that the revival will spread to an awakening for the whole campus.

5) Please remember to pray for the international population on campus. Pray that they will experience all that God has for them while they are in the U.S.A.



### **Mission Statement:**

“Middlesex Community College provides access to affordable education for a diverse community from all ethnic backgrounds and identities, preparing individuals for success and lifelong learning. We promote academic excellence, provide workforce development opportunities, and empower all learners to become productive and socially responsible members of our local and global communities.”





# Montserrat College of Art

## Beverly, MA



**This Campus Has NOT Been Adopted**

**Known Christian Groups on Campus:**

No Known Gospel Witness

DAY  
21

President.....Kurt T. Steinberg  
Type .....4-year, Private Non-Profit  
Campus Housing.....Yes  
Student Population.....374  
Student-to-Faculty Ratio.....12 to 1



### **Prayer Request:**

1) Please pray Luke 10.2 with us: *“The harvest is plentiful, but the laborers are few; therefore, plead with the Lord of the harvest to send out laborers into His harvest.”* (NASB)

2) Pray that as this semester begins the Holy Spirit will be active on campus reminding people of all that Jesus has done in their lives.

3) Pray for the student groups as this semester gets started. The first several weeks are critical in finding new friends and reaching students for Christ.

4) Pray for a revival among the Christian students. Pray that the revival will spread to an awakening for the whole campus.

5) Please remember to pray for the international population on campus. Pray that they will experience all that God has for them while they are in the U.S.A.



### **Mission Statement:**

“Founded by working creative professionals, Montserrat College of Art provides an individualized education focused on maximizing the professional and personal success of each student. Structured around experiential learning, studio practice, liberal arts, and professional preparation, the mission of the college ensures that its graduates leave equipped with the competence, confidence, and habits of mind to build lives of creative enterprise and community engagement. Montserrat recognizes its role as an economic driver and cultural leader in the region.”





# Mount Holyoke College

## South Hadley, MA



**This Campus Has NOT Been Adopted**

DAY  
22

**Known Christian Groups on Campus:**

Dean of Religious and Spiritual Life .....Annette M. McDermott  
Multifaith Chaplain including Protestant...Leslie Fraser

President .....Sonya Stephens  
Type.....4-year, Private Non-Profit  
Campus Housing ..... Yes  
Student Population .....2,300  
Student-to-Faculty Ratio .....9 to 1  
International Students (2019).....609 from at least 34 Countries.

Bahamas, Bangladesh, Brazil, Canada, China, France, Germany, Ghana, Greece, Hong Kong, India, Indonesia, Italy, Jamaica, Japan, Jordan, Kenya, Malaysia, Mongolia, Nepal, Nigeria, Pakistan, Philippines, Russia, Saudi Arabia, Singapore, South Korea, Spain, Sri Lanka, Sweden, Taiwan, Thailand, United Kingdom, Vietnam.



### **Prayer Request:**

1) Please pray Luke 10.2 with us: *“The harvest is plentiful, but the laborers are few; therefore, plead with the Lord of the harvest to send out laborers into His harvest.”* (NASB)

2) Pray that as this semester begins the Holy Spirit will be active on campus reminding people of all that Jesus has done in their lives.

3) Pray for the student groups as this semester gets started. The first several weeks are critical in finding new friends and reaching students for Christ.

4) Pray for a revival among the Christian students. Pray that the revival will spread to an awakening for the whole campus.

5) Please remember to pray for the international population on campus. Pray that they will experience all that God has for them while they are in the U.S.A.

### **Mission Statement:**

“Mount Holyoke’s mission is to provide an intellectually adventurous education in the liberal arts and sciences through academic programs recognized internationally for their excellence and range; to draw students from all backgrounds into an exceptionally diverse and inclusive learning community with a highly accomplished, committed, and responsive faculty and staff; to continue building on the College’s historic legacy of leadership in the education of women; and to prepare students, through a liberal education integrating curriculum and careers, for lives of thoughtful, effective, and purposeful engagement in the world.”





# Mount Wachusett Community College

## Gardner, MA



**This Campus Has NOT Been Adopted**

**Known Christian Groups on Campus:**

Cru ..... Kathleen Matson

DAY  
23

President..... James L. Vander Hooven  
Type..... 2-year, Public  
Campus Housing ..... No  
Student Population ..... 3,674  
Student-to-Faculty Ratio ..... 9 to 1  
“There are approximately 21 [international](#) students at MWCC; they make up 0.6% of all total students.”

### **\*Additional Locations**

Leominster, MA  
Devens, MA  
Fitchburg, MA

### **Mission Statement:**

“MWCC is a lifelong learning community dedicated to excellence in education and responsive to the changing needs of the communities we serve. Our focus is the preparation of individuals for lives of fulfillment, leadership, and service in a diverse and global society. We are committed to engaging students in rich and challenging learning opportunities within a small college atmosphere that is known for its personal touch.”



### **Prayer Request:**

- 1) Please pray Luke 10.2 with us: *“The harvest is plentiful, but the laborers are few; therefore, plead with the Lord of the harvest to send out laborers into His harvest.”* (NASB)
- 2) Pray that as this semester begins the Holy Spirit will be active on campus reminding people of all that Jesus has done in their lives.
- 3) Pray for the student groups as this semester gets started. The first several weeks are critical in finding new friends and reaching students for Christ.
- 4) Pray for a revival among the Christian students. Pray that the revival will spread to an awakening for the whole campus.
- 5) Please remember to pray for the international population on campus. Pray that they will experience all that God has for them while they are in the U.S.A.





# New England College of Optometry Boston, MA



**This Campus Has NOT Been Adopted**

**Known Christian Groups on Campus:**

No Known Gospel Witness

DAY  
24

President ..... Howard Purcell  
Type..... 4-year, Private Non-Profit  
Campus Housing ..... No  
Student Population ..... 538  
Student-to-Faculty Ratio ..... Unavailable  
“There are approximately 134 international students at New England College of Optometry; they make up 25.7% of all total students.”



## **Prayer Request:**

1) Please pray Luke 10.2 with us: “*The harvest is plentiful, but the laborers are few; therefore, plead with the Lord of the harvest to send out laborers into His harvest.*” (NASB)

2) Pray that as this semester begins the Holy Spirit will be active on campus reminding people of all that Jesus has done in their lives.

3) Pray for the student groups as this semester gets started. The first several weeks are critical in finding new friends and reaching students for Christ.

4) Pray for a revival among the Christian students. Pray that the revival will spread to an awakening for the whole campus.

5) Please remember to pray for the international population on campus. Pray that they will experience all that God has for them while they are in the U.S.A.



## **Mission Statement:**

“The mission of New England College of Optometry is to change the way people see the world. We do so by:

- Integrating innovative education with early and diverse clinical experiences to prepare today’s optometrists for tomorrow’s optometry.
- Advancing the frontiers of optometric knowledge through evidence-based research, and translating that knowledge to improve patients’ lives worldwide.
- Cultivating compassionate care of the highest level of proficiency, integrity, and professionalism; influencing public policy; expanding access to comprehensive and specialty optometric services; and instilling sensitivity to the health and social welfare of diverse communities.”



# New England Law-Boston Boston, MA

President and Dean..... Scott P. Brown  
Type..... 4-year, Private Non-Profit  
Campus Housing ..... No  
Student Population ..... 709  
Student-to-Faculty Ratio ..... Unavailable  
“International” “There are approximately 7 international students at New England Law; they make up 1.3% of all total students.”



## Prayer Request:

- 1) Please pray Luke 10.2 with us: “*The harvest is plentiful, but the laborers are few; therefore, plead with the Lord of the harvest to send out laborers into His harvest.*” (NASB)
- 2) Pray that as this semester begins the Holy Spirit will be active on campus reminding people of all that Jesus has done in their lives.
- 3) Pray for the student groups as this semester gets started. The first several weeks are critical in finding new friends and reaching students for Christ.
- 4) Pray for a revival among the Christian students. Pray that the revival will spread to an awakening for the whole campus.
- 5) Please remember to pray for the international population on campus. Pray that they will experience all that God has for them while they are in the U.S.A.



**This Campus Has NOT Been Adopted**

**Known Christian Groups on Campus:**

No Known Gospel Witness

DAY  
25

## **Mission Statement:**

“New England Law | Boston dedicates itself: (1) to preparing students to be successful lawyers and leaders in the public and private sectors through integrated practical, theoretical and ethical education of the highest caliber; and (2) to contributing to the improvement of American, foreign, and international legal systems through participation in the debate over the fairness and efficacy of those systems, research and publication, public service and other work that furthers the interests of justice”.





# Nichols College

## Dudley, MA



**This Campus Has NOT Been Adopted**

**Known Christian Groups on Campus:**

No Known Gospel Witness

DAY  
26

President..... Glenn M. Sulmasy  
Type..... 4-year, Private Non-Profit  
Campus Housing ..... Yes  
Student Population ..... 1,560  
Student-to-Faculty Ratio ..... 16 to 1  
International Students (2019)..... 37 from at least 18 Countries.  
Brazil, Canada, China, Columbia, Egypt, France, India, Italy, Japan,  
Mongolia, Netherlands, Russia, Spain, Sweden, Thailand, Turkey, United  
Kingdom.



### **Prayer Request:**

- 1) Please pray Luke 10.2 with us: *“The harvest is plentiful, but the laborers are few; therefore, plead with the Lord of the harvest to send out laborers into His harvest.”* (NASB)
- 2) Pray that as this semester begins the Holy Spirit will be active on campus reminding people of all that Jesus has done in their lives.
- 3) Pray for the student groups as this semester gets started. The first several weeks are critical in finding new friends and reaching students for Christ.
- 4) Pray for a revival among the Christian students. Pray that the revival will spread to an awakening for the whole campus.
- 5) Please remember to pray for the international population on campus. Pray that they will experience all that God has for them while they are in the U.S.A.



### **Mission Statement:**

“Within a supportive community, Nichols College transforms today’s students into tomorrow’s leaders through a dynamic, career-focused business and professional education.”





# North Shore Community College

## Danvers, MA

President ..... William A. Heineman  
Type ..... 2-year, Public  
Campus Housing ..... No  
Student Population ..... 5,388  
Student-to-Faculty Ratio ..... 13 to 1

**\*Additional Campus**  
Lynn, MA



### **Prayer Request:**

- 1) Please pray Luke 10.2 with us: *“The harvest is plentiful, but the laborers are few; therefore, plead with the Lord of the harvest to send out laborers into His harvest.”* (NASB)
- 2) Pray that as this semester begins the Holy Spirit will be active on campus reminding people of all that Jesus has done in their lives.
- 3) Pray for the student groups as this semester gets started. The first several weeks are critical in finding new friends and reaching students for Christ.
- 4) Pray for a revival among the Christian students. Pray that the revival will spread to an awakening for the whole campus.
- 5) Please remember to pray for the international population on campus. Pray that they will experience all that God has for them while they are in the U.S.A.



**This Campus Has NOT Been Adopted**

**Known Christian Groups on Campus:**  
No Known Gospel Witness

DAY  
27



### **Mission Statement:**

“North Shore Community College is a diverse, caring, inclusive community that inspires our students to become engaged citizens and to achieve their personal, academic, and career goals through accessible, affordable, rigorous educational opportunities that are aligned with our region's workforce needs and will prepare them for life in a changing world.”





# Northeastern University Boston, MA



**This Campus Has NOT Been Adopted**

DAY  
28

## **Known Christian Groups on Campus:**

President.....Joseph E. Aoun  
Type .....4-year, Private Non-Profit  
Campus Housing.....Yes  
Student Population.....22,207  
Student-to-Faculty Ratio.....14 to 1  
**International** Students (2019).....7,035 from at least 50 Countries.

Australia, Bahamas, Bangladesh, Brazil, Canada, China, Colombia, Ecuador, Egypt, France, Germany, Ghana, Greece, Hong Kong, India, Indonesia, Iran, Israel, Italy, Jamaica, Japan, Jordan, Kenya, Kuwait, Malaysia, Mexico, Mongolia, Nepal, Netherlands, Nigeria, Norway, Oman, Pakistan, Peru, Philippines, Russia, Saudi Arabia, Singapore, South Korea, Spain, Sri Lanka, Sweden, Taiwan, Thailand, Turkey, Ukraine, United Arab Emirates, United Kingdom, Venezuela, Vietnam.



### **Prayer Request:**

1) Please pray Luke 10.2 with us: *“The harvest is plentiful, but the laborers are few; therefore, plead with the Lord of the harvest to send out laborers into His harvest.”* (NASB)

2) Pray that as this semester begins the Holy Spirit will be active on campus reminding people of all that Jesus has done in their lives.

3) Pray for the student groups as this semester gets started. The first several weeks are critical in finding new friends and reaching students for Christ.

4) Pray for a revival among the Christian students. Pray that the revival will spread to an awakening for the whole campus.

5) Please remember to pray for the international population on campus. Pray that they will experience all that God has for them while they are in the U.S.A.

### **Spiritual Advisor**

Lutheran.....Joyce DeGreeff  
Sojourn Collegiate Ministry .....Lindsay Hicks  
Episcopal .....Rev. Megan Holding  
Youth With A Mission .....Minchul Jo  
Youth With A Mission .....Harim Lee  
InterVarsity.....Christine McEvoy  
Greek Orthodox .....Fr. Demetrios Toniaas  
Cru .....Todd Williams  
Catholic.....Br. Jason Zink

### **Student Organizations**

Agape Christian Fellowship .....Heather Novak  
Catholic Student Association .....Samuel Neumann  
Chinese Christian Fellowship.....Yifan He  
Coptic Orthodox Student fellowship..Christopher Mahir  
Encounter Every Nation Campus Ministry  
.....Arien Wagen  
InterVarsity.....Nathan Wu  
Lutheran-Episcopal.....Alana Kent  
Graduate Asian Baptist Student Koinonia  
.....Chi Qiao  
Sojourn Christian Collegiate Ministry.Victoria Dixon



### **Mission Statement:**

“To educate students for a life of fulfillment and accomplishment. To create and translate knowledge to meet global and societal needs.”

# Northern Essex Community College

## Haverhill, MA

President ..... Lane A. Glenn  
Type ..... 2-year, Public  
Campus Housing ..... No  
Student Population ..... 4,932  
Student-to-Faculty Ratio ..... 20 to 1  
“There are approximately 44 international students at Northern Essex Community College; they make up 0.8% of all total students.”



### **Prayer Request:**

- 1) Please pray Luke 10.2 with us: *“The harvest is plentiful, but the laborers are few; therefore, plead with the Lord of the harvest to send out laborers into His harvest.”* (NASB)
- 2) Pray that as this semester begins the Holy Spirit will be active on campus reminding people of all that Jesus has done in their lives.
- 3) Pray for the student groups as this semester gets started. The first several weeks are critical in finding new friends and reaching students for Christ.
- 4) Pray for a revival among the Christian students. Pray that the revival will spread to an awakening for the whole campus.
- 5) Please remember to pray for the international population on campus. Pray that they will experience all that God has for them while they are in the U.S.A.



**This Campus Has NOT Been Adopted**

**Known Christian Groups on Campus:**

No Known Gospel Witness

DAY  
29



### **Mission Statement:**

“At NECC, our mission is to educate and inspire our students to succeed. We provide a welcoming environment focused on teaching and learning—strongly committed to unlocking the potential within each student and empowering our diverse community of learners to meet their individual goals. We are a community college dedicated to creating vibrant and innovative opportunities that encourage excellence and enhance the cultural and economic life of our region.”





# Northpoint Bible College

## Haverhill, MA

President..... David Arnett  
Type..... 4-year, Private Non-Profit  
Campus Housing ..... Yes  
Student Population ..... 347  
Student-to-Faculty Ratio ..... 18 to 1  
“There are approximately 7 international students at Northpoint Bible College; they make up 2.0% of all total students.”



### **Prayer Request:**

- 1) Please pray Luke 10.2 with us: *“The harvest is plentiful, but the laborers are few; therefore, plead with the Lord of the harvest to send out laborers into His harvest.”* (NASB)
- 2) Pray that as this semester begins the Holy Spirit will be active on campus reminding people of all that Jesus has done in their lives.
- 3) Pray for the student groups as this semester gets started. The first several weeks are critical in finding new friends and reaching students for Christ.
- 4) Pray for a revival among the Christian students. Pray that the revival will spread to an awakening for the whole campus.
- 5) Please remember to pray for the international population on campus. Pray that they will experience all that God has for them while they are in the U.S.A.



**This Campus Has NOT Been Adopted**

### **Known Christian Groups on Campus:**

Chapel Monday-Thursday  
Prayer and fasting six times per year  
Class Prayers once a month  
Dorm Devotions

DAY  
30



### **Mission Statement:**

“Northpoint Bible College exists to teach and to train students for excellent Pentecostal ministry, in fulfillment of the Great Commission.”

