

# New York Ministry Network

## 33 Day Prayer Guide



**Volume IV**

Dear Friends,

You have before you volume four of the New York Ministry Network collegiate prayer guides. We are in the process of creating a prayer guide for each school in NY. Thank You for your participation in prayer.

These prayer guides are being put together because Jesus asked us to pray for laborers: Luke 10.2 *“The harvest is plentiful, but the laborers are few; therefore, plead with the Lord of the harvest to send out laborers into His harvest”* (NASB). We, at Chi Alpha, are asking you to *“plead”* with the Lord of the harvest for laborers. We believe that God wants to send an awakening to the campuses of America! We need your help.

In this guide, like the last, we have tried to find all the Christian organizations on each campus. It is likely that we missed a few. For example, we only know of those churches which are reaching out to campuses if they are listed on the college’s website. So, if you are reaching out to students, and you are not listed in this prayer guide, please forgive us. Let us know, and if there are future prayer guides will include you.

Please pray for the student leaders of the Christian groups listed. They are the “soldiers on the front lines”. Some of them may not even know that they are in spiritual warfare. Pray that the Holy Spirit wakes them to that fact. Some student groups show a question mark instead of a student leader. This happens only when a student leader or advisor could not be located.

You will notice that several schools have chaplains and ministry staff. We never know where they stand on Christ, Sin, Biblical Authority, etc. Pray that God works in them and through them nevertheless.

We also found the names of some of the student group advisors. These are faculty or staff who are Christians, or at least sympathetic to Christianity, and act in as advocates and liaison to the administration. They too are soldiers on the front line.

An advantage of praying for the advisor is that they are more “stable”. Normally student leaders are voted on every year, whereas advisors, like the chaplains, stay in their position for years at a time. Creating a continuity of ministry.

On another note, this prayer guide was compiled with data from the list found at “The National Center for Education Statistics” ([NCES](#)) and from each school’s own website. For the international student statistics, we used a website called “[College Factual](#)”. The international statistics are under the “Student Life” tab.

Thank You again for investing time into this next generation. Only eternity will tell what we helped along and what we were able to hinder.

Be Blessed,  
Joe and Heidi Barrale  
[Assemblies of God U.S. Missionaries](#)  
[Chi Alpha](#) / [Adopt-A-Campus.org](#)  
[Blog at Adopt-A-Campus](#)

## A List of Schools Included in this Prayer Guide

Day 1 Keuka College

Day 2 Le Moyne College

Day 3 LIM College

Day 4 Long Island Business Institute

Day 5 Long Island University

Day 6 Machzikei Hadath Rabbinical College

Day 7 Mandl School-The College of Allied Health

Day 8 Manhattan College

Day 9 Manhattan School of Music

Day 10 Manhattanville College

Day 11 Maria College of Albany

Day 12 Marist College

Day 13 Marymount Manhattan College

Day 14 Medaille College

Day 15 Mercy College

Day 16 Mesivta Torah Vodaath Rabbinical Seminary

Day 17 Metropolitan College of New York

Day 18 Mildred Elley School-Albany Campus

Day 19 Mildred Elley-New York Campus

Day 20 Mirrer Yeshiva Cent Institute

Day 21 Mohawk Valley Community College

Day 22 Molloy College

Day 23 Monroe College

Day 24 Monroe Community College

Day 25 Montefiore School of Nursing

Day 26 Mount Saint Mary College

Day 27 Nassau Community College

Day 28 Nazareth College

Day 29 New York Academy of Art

Day 30 New York Automotive and Diesel Institute

Day 31 New York Chiropractic College

Day 32 New York College of Health Professions

Day 33 New York College of Podiatric Medicine



# Keuka College

## Keuka Park, NY



This Campus Has NOT Been Adopted

DAY  
1

Known Christian Groups on Campus:

BASIC (Brothers and Sisters In Christ) ... Wellspring Fellowship

President..... Amy Storey  
Type ..... 4-year, Private Non-Profit  
Campus Housing ..... Yes  
Student Population ..... 1,777  
Student-to-Faculty Ratio ..... 11 to 1  
International Students (2019)..... 24 from at least 8 Countries  
Canada, China, Netherlands, Saudi Arabia, Vietnam.



### Mission Statement

#### **“MISSION**

To create exemplary citizens and leaders to serve the nation and the world.

#### **VISION**

To bring strength to our nation and help to humanity.”



### Prayer Request:

1) Please pray Luke 10.2 with us: *“The harvest is plentiful, but the laborers are few; therefore, plead with the Lord of the harvest to send out laborers into His harvest.”* (NASB)

2) Pray that as this semester begins the Holy Spirit will be active on campus reminding people of all that Jesus has done in their lives.

3) Pray for the student groups as this semester gets started. The first several weeks are critical in finding new friends and reaching students for Christ.

4) Pray for a revival among the Christian students. Pray that the revival will spread to an awakening for the whole campus.

5) Please remember to pray for the international population on campus. Pray that they will experience all that God has for them while they are in the U.S.A.





# Le Moyne College Syracuse, NY

President ..... Linda LeMura  
 Type ..... 4-year, Private Non-Profit  
 Campus Housing ..... Yes  
 Student Population ..... 3,326  
 Student-to-Faculty Ratio ..... 12 to 1  
International Students (2019) ..... 37 from at least 17 Countries  
 Australia, Bahamas, Brazil, Canada, China, Germany, Greece,  
 India, Jamaica, Mexico, Netherlands, Peru, Singapore, South Ko-  
 rea, Spain, Turkey, United Kingdom.



## **Prayer Request:**

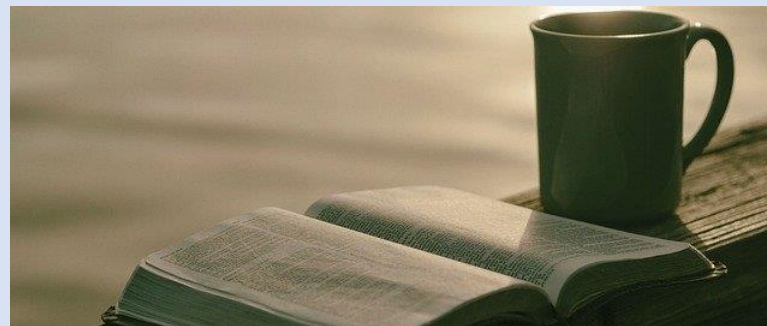
- 1) Please pray Luke 10.2 with us: *“The harvest is plentiful, but the laborers are few; therefore, plead with the Lord of the harvest to send out laborers into His harvest.”* (NASB)
- 2) Pray that as this semester begins the Holy Spirit will be active on campus reminding people of all that Jesus has done in their lives.
- 3) Pray for the student groups as this semester gets started. The first several weeks are critical in finding new friends and reaching students for Christ.
- 4) Pray for a revival among the Christian students. Pray that the revival will spread to an awakening for the whole campus.
- 5) Please remember to pray for the international population on campus. Pray that they will experience all that God has for them while they are in the U.S.A.



## **This Campus Has NOT Been Adopted**

### **Known Christian Groups on Campus:**

Campus Ministry ..... Fr. Daniel J. Mulhauser  
 Homeless Outreach..... Fr. Bill Dolan (Advisor)  
 Ignatian Ignite ..... Tom Andino (Advisor)  
 Joyful Noise Music Ministry ..... Matt Wojak  
 Phins Unplugged ..... Victoria Breslin  
 LIFE Network ..... Elder Melvin Baker  
 Monday Night LIFE..... Elder Melvin Baker  
 Koinonia Companions (men) ..... Jacob Donofry  
 Soul Sisters ..... Victoria Breslin  
 Thursday Night LIFE ..... Elder Melvin Baker



## **Mission Statement**

“Le Moyne College is a diverse learning community that strives for academic excellence in the Catholic and Jesuit tradition through its comprehensive programs rooted in the liberal arts and sciences. Its emphasis is on education of the whole person and on the search for meaning and value as integral parts of the intellectual life. Le Moyne College seeks to prepare its members for leadership and service in their personal and professional lives to promote a more just society.”



# LIM College

## New York, NY



This Campus Has NOT Been Adopted

DAY  
3

Known Christian Groups on Campus:  
No Known Gospel Witness

President..... Elizabeth S. Marcuse  
Type..... 4-year, Private Non-Profit  
Campus Housing ..... Yes  
Student Population ..... 1,749  
Student-to-Faculty Ratio ..... 17 to 1  
International Students (2019)..... 160 from at least 32 Countries

Australia, Brazil, Canada, China, Colombia, Ecuador, France, Germany, Hong Kong, India, Indonesia, Iran, Italy, Japan, Malaysia, Mexico, Nepal, Netherlands, Norway, Pakistan, Philippines, Russia, Singapore, South Korea, Spain, Sweden, Taiwan, Thailand, Turkey, United Kingdom, Venezuela, Vietnam.



### Prayer Request:

1) Please pray Luke 10.2 with us: *“The harvest is plentiful, but the laborers are few; therefore, plead with the Lord of the harvest to send out laborers into His harvest.”* (NASB)

2) Pray that as this semester begins the Holy Spirit will be active on campus reminding people of all that Jesus has done in their lives.

3) Pray for the student groups as this semester gets started. The first several weeks are critical in finding new friends and reaching students for Christ.

4) Pray for a revival among the Christian students. Pray that the revival will spread to an awakening for the whole campus.

5) Please remember to pray for the international population on campus. Pray that they will experience all that God has for them while they are in the U.S.A.



### Mission Statement

“LIM College educates students for success in the global business of fashion and its many related industries. As a pioneer in experiential education, LIM College fosters a unique connection between real-world experience and academic study in business principles. Developing students’ creative and critical thinking, as well as leadership skills, an LIM College education empowers students to become accomplished professionals in a highly competitive, dynamic business environment as well as responsible citizens of a global society.”





# Long Island Business Institute

## Flushing, NY



**This Campus Has NOT been Adopted**

**Known Christian Groups on Campus:**

No Known Gospel Witness

DAY  
4

President..... Monica W. Foote  
Type ..... 2-year, Private For-Profit  
Campus Housing..... No  
Student Population ..... 999  
Student-to-Faculty Ratio..... 11 to 1  
“There are approximately 27 international students at Long Island Business Institute; they make up 4.1% of all total students.”

### **\*Other Locations**

Long Island Campus Commack, NY  
Manhattan Campus, NY, NY



### **Mission Statement**

“The mission of the Long Island Business Institute is to provide a culturally diverse student body with current and relevant career and technical training that leads to new employment opportunities. LIBI provides a well-rounded educational experience for the development of a broader range of skill sets required to succeed in today’s complex and challenging business environment. LIBI strives to create a positive and empowering learning environment that supports the immediate efforts of our students and lays the foundation for life-long learning.”

### **Prayer Request:**

1) Please pray Luke 10.2 with us: *“The harvest is plentiful, but the laborers are few; therefore, plead with the Lord of the harvest to send out laborers into His harvest.”* (NASB)

2) Pray that as this semester begins the Holy Spirit will be active on campus reminding people of all that Jesus has done in their lives.

3) Pray for the student groups as this semester gets started. The first several weeks are critical in finding new friends and reaching students for Christ.

4) Pray for a revival among the Christian students. Pray that the revival will spread to an awakening for the whole campus.

5) Please remember to pray for the international population on campus. Pray that they will experience all that God has for them while they are in the U.S.A.



# Long Island University

## Brookville, NY

President.....Kimberly R. Cline  
Type .....4-year, Private Non-Profit  
Campus Housing.....Yes  
Student Population.....15,546  
Student-to-Faculty Ratio.....12 to 1  
“There are approximately 658 international students at LIU Post; they make up 4.3% of all total students.”  
\*Additional Campus:  
Brooklyn, NY



### Prayer Request:

- 1) Please pray Luke 10.2 with us: “*The harvest is plentiful, but the laborers are few; therefore, plead with the Lord of the harvest to send out laborers into His harvest.*” (NASB)
- 2) Pray that as this semester begins the Holy Spirit will be active on campus reminding people of all that Jesus has done in their lives.
- 3) Pray for the student groups as this semester gets started. The first several weeks are critical in finding new friends and reaching students for Christ.
- 4) Pray for a revival among the Christian students. Pray that the revival will spread to an awakening for the whole campus.
- 5) Please remember to pray for the international population on campus. Pray that they will experience all that God has for them while they are in the U.S.A.



**This Campus Has NOT Been Adopted**

### **Known Christian Groups on Campus:**

Chaplain ..... Fr. Charles Keeney  
BASIC (Brothers and Sisters in Christ) ...?  
Newman Club ..... ?

### **Brooklyn Campus**

Christian Fellowship ..... Jennifer Celus  
Coptic Orthodox Christian Club..... Marina Naguib



### **Mission Statement**

“Long Island University's mission is to provide excellence and access in private higher education to people from all backgrounds who seek to expand their knowledge and prepare themselves for meaningful, educated lives and for service to their communities and the world.”



DAY  
5



# Machzikei Hadath Rabbinical College

## Brooklyn, NY

President ..... Not Available  
Type ..... 4-year, Private Non-Profit  
Campus Housing ..... Yes  
Student Population ..... 138  
Student-to-Faculty Ratio ..... 14 to 1



**This Campus Has NOT Been Adopted**

**Known Christian Groups on Campus:**

No Known Gospel Witness

DAY  
6



### **Mission Statement**

“Machzikei Hadath Rabbinical College was founded in 1956 to provide a program of intensive study in Talmud and Rabbinical studies.”

### **Prayer Request:**

- 1) Please pray Luke 10.2 with us: *“The harvest is plentiful, but the laborers are few; therefore, plead with the Lord of the harvest to send out laborers into His harvest.”* (NASB)
- 2) Pray that as this semester begins the Holy Spirit will be active on campus reminding people of all that Jesus has done in their lives.
- 3) Pray for the student groups as this semester gets started. The first several weeks are critical in finding new friends and reaching students for Christ.
- 4) Pray for a revival among the Christian students. Pray that the revival will spread to an awakening for the whole campus.
- 5) Please remember to pray for the international population on campus. Pray that they will experience all that God has for them while they are in the U.S.A.



# Mandl School-The College of Allied Health New York, NY



**This Campus Has NOT Been Adopted**

**Known Christian Groups on Campus:**

No Known Gospel Witness

DAY  
7

President.....Mel Weiner  
Type .....2-year, Private For-Profit  
Campus Housing.....No  
Student Population.....519  
Student-to-Faculty Ratio.....18 to 1



## **Mission Statement**

“Our pledge is to provide our students with the finest Allied Health academic programs and training available in the New York City. It is our mission to educate men and women, regardless of their backgrounds, to serve ably and effectively in the allied health industry.”

## **Prayer Request:**

- 1) Please pray Luke 10.2 with us: *“The harvest is plentiful, but the laborers are few; therefore, plead with the Lord of the harvest to send out laborers into His harvest.”* (NASB)
- 2) Pray that as this semester begins the Holy Spirit will be active on campus reminding people of all that Jesus has done in their lives.
- 3) Pray for the student groups as this semester gets started. The first several weeks are critical in finding new friends and reaching students for Christ.
- 4) Pray for a revival among the Christian students. Pray that the revival will spread to an awakening for the whole campus.
- 5) Please remember to pray for the international population on campus. Pray that they will experience all that God has for them while they are in the U.S.A.





# Manhattan College

## Riverdale, NY



**This Campus Has NOT Been Adopted**

DAY  
8

**Known Christian Groups on Campus:**

Campus Ministry:

College Chaplain.....Fr. Thomas Franks

Campus Ministry/Social Action....Jacquie Martin

Campus Minister.....Conor Reidy

Faith Based Retreats .....?

Agape Latte Speaker Series .....?

**Student Groups:**

Catholic Relief Services.....?

JusticePeace .....?

Lasallian Collegians.....?

Music Ministry.....?



President ..... Brennan O'Donnell

Type..... 4-year, Private Non-Profit

Campus Housing ..... Yes

Student Population ..... 4,117

Student-to-Faculty Ratio ..... 13 to 1

**International** Students (2019) ..... 156 from at least 40 Countries

Australia, Bangladesh, Brazil, Canada, China, Colombia, Ecuador, Egypt, France, Germany, Hong Kong, India, Indonesia, Iran, Israel, Italy, Japan, Kenya, Kuwait, Mexico, Nepal, Netherlands, Nigeria, Pakistan, Peru, Philippines, Russia, Saudi Arabia, South Korea, Spain, Sweden, Taiwan, Thailand, Turkey, Ukraine, United Kingdom, Venezuela, Vietnam.



### **Prayer Request:**

1) Please pray Luke 10.2 with us: *“The harvest is plentiful, but the laborers are few; therefore, plead with the Lord of the harvest to send out laborers into His harvest.”* (NASB)

2) Pray that as this semester begins the Holy Spirit will be active on campus reminding people of all that Jesus has done in their lives.

3) Pray for the student groups as this semester gets started. The first several weeks are critical in finding new friends and reaching students for Christ.

4) Pray for a revival among the Christian students. Pray that the revival will spread to an awakening for the whole campus.

5) Please remember to pray for the international population on campus. Pray that they will experience all that God has for them while they are in the U.S.A.



### **Mission Statement**

“Manhattan College is an independent Catholic institution of higher learning that embraces qualified men and women of all faiths, cultures, and traditions. The mission of Manhattan College is to provide a contemporary, person-centered educational experience that prepares graduates for lives of personal development, professional success, civic engagement, and service to their fellow human beings. The College pursues this mission through programs that integrate a broad liberal education with concentration in specific disciplines in the arts and sciences or with professional preparation in business, education and engineering.”



# Manhattan School of Music

## New York, NY



This Campus Has NOT Been Adopted

DAY  
9

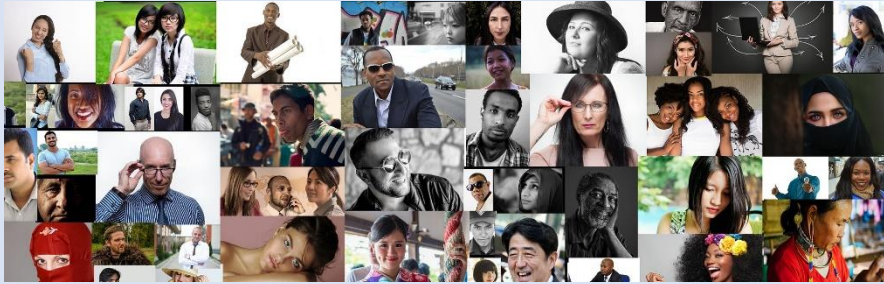
Known Christian Groups on Campus:

InterVarsity ..... Jonathan Gilbert

President..... James Gandre  
Type ..... 4-year, Private Non-Profit  
Campus Housing..... Yes  
Student Population ..... 1,009  
Student-to-Faculty Ratio..... 5 to 1

International Students (2019)..... 532 from at least 30 Countries

Australia, Brazil, Canada, China, Colombia, Ecuador, France, Germany, Greece, Hong Kong, India, Indonesia, Italy, Japan, Malaysia, Mexico, Norway, Peru, Philippines, Russia, Singapore, South Korea, Spain, Sweden, Taiwan, Turkey, United Kingdom, Venezuela, Vietnam.



### Prayer Request:

1) Please pray Luke 10.2 with us: *“The harvest is plentiful, but the laborers are few; therefore, plead with the Lord of the harvest to send out laborers into His harvest.”* (NASB)

2) Pray that as this semester begins the Holy Spirit will be active on campus reminding people of all that Jesus has done in their lives.

3) Pray for the student groups as this semester gets started. The first several weeks are critical in finding new friends and reaching students for Christ.

4) Pray for a revival among the Christian students. Pray that the revival will spread to an awakening for the whole campus.

5) Please remember to pray for the international population on campus. Pray that they will experience all that God has for them while they are in the U.S.A.



### Mission Statement

“Manhattan School of Music’s Mission Statement Manhattan School of Music is deeply committed to excellence in education, performance, and creative activity; to the humanity of the School’s environment; to preparing all our students to find their success; and to the cultural enrichment of the larger community. A premier international conservatory, MSM inspires and empowers highly talented individuals to realize their potential. We take full advantage of New York’s abundant learning and performance opportunities, preparing our students to be accomplished and passionate performers, composers and teachers, and imaginative, effective contributors to the arts and society.”





# Manhattanville College

## Purchase, NY



**This Campus Has NOT Been Adopted**

DAY  
10

**Known Christian Groups on Campus:**

Catholic Chaplain..... Joy Pellegrino

President ..... Michael Geisler  
Type ..... 4-year, Private Non-Profit  
Campus Housing..... Yes  
Student Population..... 2,535  
Student-to-Faculty Ratio..... 11 to 1  
International Students (2019) ..... 130 from at least 34 Countries  
Australia, Brazil, Canada, China, Colombia, Ecuador, Egypt,  
France, Germany, Ghana, India, Indonesia, Iran, Italy, Jamaica, Ja-  
pan, Mexico, Nepal, Norway, Pakistan, Peru, Russia, Saudi Arabia,  
South Korea, Spain, Sweden, Taiwan, Thailand, Ukraine, United  
Arab Emirates, United Kingdom, Venezuela, Vietnam.



### **Prayer Request:**

1) Please pray Luke 10.2 with us: *“The harvest is plentiful, but the laborers are few; therefore, plead with the Lord of the harvest to send out laborers into His harvest.”* (NASB)

2) Pray that as this semester begins the Holy Spirit will be active on campus reminding people of all that Jesus has done in their lives.

3) Pray for the student groups as this semester gets started. The first several weeks are critical in finding new friends and reaching students for Christ.

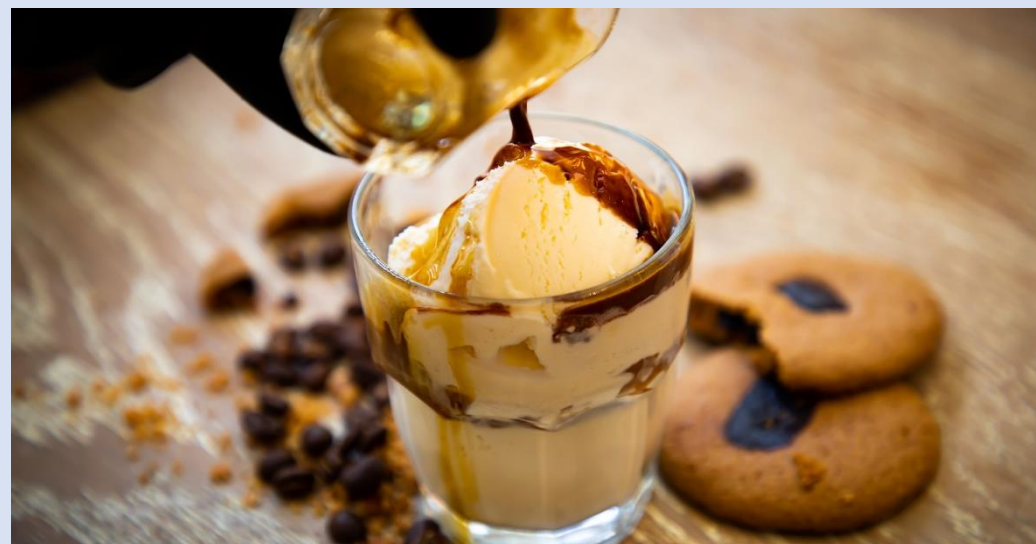
4) Pray for a revival among the Christian students. Pray that the revival will spread to an awakening for the whole campus.

5) Please remember to pray for the international population on campus. Pray that they will experience all that God has for them while they are in the U.S.A.



### **Mission Statement**

“We are committed to ensuring the intellectual, ethical, and social development of each student with a community of engaged scholars and teachers; encouraging each student to develop as an independent and creative thinker in pursuing career and personal goals; and providing a diverse, inclusive, and nurturing environment which develops in each student a commitment to service and leadership within a global community.”





# Maria College of Albany

## Albany, NY



**This Campus Has NOT Been Adopted**

**Known Christian Groups on Campus:**

Pastoral Care ..... Sister Chris Connolly

DAY  
11

President ..... Thomas J. Gamble  
Type ..... 4-year, Private Non-Profit  
Campus Housing ..... No  
Student Population ..... 796  
Student-to-Faculty Ratio ..... 8 to 1



### **Prayer Request:**

1) Please pray Luke 10.2 with us: *“The harvest is plentiful, but the laborers are few; therefore, plead with the Lord of the harvest to send out laborers into His harvest.”* (NASB)

2) Pray that as this semester begins the Holy Spirit will be active on campus reminding people of all that Jesus has done in their lives.

3) Pray for the student groups as this semester gets started. The first several weeks are critical in finding new friends and reaching students for Christ.

4) Pray for a revival among the Christian students. Pray that the revival will spread to an awakening for the whole campus.

5) Please remember to pray for the international population on campus. Pray that they will experience all that God has for them while they are in the U.S.A.



### **Mission Statement**

“Maria is a Catholic college sponsored by the Sisters of Mercy and animated by the Mercy charism. It provides career-relevant, opportunity education in the context of the Catholic Intellectual Tradition to all who can benefit from it. Maria is committed to outstanding and holistic student support services, financial sustainability and the purposive use of evidence to drive institutional renewal and student success. Maria seeks to foster graduates who recognize and respect the dignity of every human person and who will transform their knowledge and skill into caring and compassionate service to others.”





# Marist College Poughkeepsie, NY



**This Campus Has NOT Been Adopted**

DAY  
12

## **Known Christian Groups on Campus:**

Campus Minister ..... Br. Frank Kelly  
Campus Minister ..... Br. Michael Flanigan

President ..... Kevin C. Weinman  
Type ..... 4-year, Private Not-Profit  
Campus Housing ..... Yes  
Student Population ..... 6,738  
Student-to-Faculty Ratio ..... 16 to 1  
International Students (2019) ..... 177 from at least 33 Countries  
Brazil, Canada, China, France, Germany, Ghana, India, Italy, Jordan, Kenya, Mexico, Nepal, Nigeria, Pakistan, Russia, South Korea, Sweden, Turkey, United Kingdom, Vietnam.



## **Prayer Request:**

- 1) Please pray Luke 10.2 with us: *“The harvest is plentiful, but the laborers are few; therefore, plead with the Lord of the harvest to send out laborers into His harvest.”* (NASB)
- 2) Pray that as this semester begins the Holy Spirit will be active on campus reminding people of all that Jesus has done in their lives.
- 3) Pray for the student groups as this semester gets started. The first several weeks are critical in finding new friends and reaching students for Christ.
- 4) Pray for a revival among the Christian students. Pray that the revival will spread to an awakening for the whole campus.
- 5) Please remember to pray for the international population on campus. Pray that they will experience all that God has for them while they are in the U.S.A.



## **Missions Statement**

“Marist is dedicated to helping students develop the intellect, character, and skills required for enlightened, ethical, and productive lives in the global community of the 21st century.”





# Marymount Manhattan College

## New York, NY



**This Campus Has NOT Been Adopted**

**Known Christian Groups on Campus:**  
Christian Fellowship .....?

DAY  
13

President..... Kerry Walk  
Type..... 4-year, Private Non-Profit  
Campus Housing ..... Yes  
Student Population ..... 1,892  
Student-to-Faculty Ratio ..... 9 to 1  
“There are approximately 82 international students at Marymount Manhattan College; they make up 4.0% of all total students.”



### **Prayer Request:**

1) Please pray Luke 10.2 with us: “*The harvest is plentiful, but the laborers are few; therefore, plead with the Lord of the harvest to send out laborers into His harvest.*” (NASB)

2) Pray that as this semester begins the Holy Spirit will be active on campus reminding people of all that Jesus has done in their lives.

3) Pray for the student groups as this semester gets started. The first several weeks are critical in finding new friends and reaching students for Christ.

4) Pray for a revival among the Christian students. Pray that the revival will spread to an awakening for the whole campus.

5) Please remember to pray for the international population on campus. Pray that they will experience all that God has for them while they are in the U.S.A.



### **Mission Statement**

“Marymount Manhattan College is an urban, independent, liberal arts college. The mission of the College is to educate a socially and economically diverse student body by fostering intellectual achievement and personal growth and by providing opportunities for career development. Inherent in this mission is the intent to develop an awareness of social, political, cultural, and ethical issues in the belief that this awareness will lead to concern for, participation in, and improvement of society. To accomplish this mission, the College offers a strong program in the arts and sciences for students of all ages, as well as substantial pre-professional preparation. Central to these efforts is the particular attention given to the individual student. Marymount Manhattan College seeks to be a resource and learning center for the metropolitan community.”





# Medaille College

## Buffalo, NY



This Campus Has NOT Been Adopted

DAY  
14

Known Christian Groups on Campus:

No Known Gospel Witness

President ..... Kenneth M. Macur  
Type ..... 4-year, Private Non-Profit  
Campus Housing..... Yes  
Student Population..... 2,002  
Student-to-Faculty Ratio..... 12 to 1

### **\*Additional Campus**

Rochester Campus, Rochester, NY



### **Prayer Request:**

1) Please pray Luke 10.2 with us: *“The harvest is plentiful, but the laborers are few; therefore, plead with the Lord of the harvest to send out laborers into His harvest.”* (NASB)

2) Pray that as this semester begins the Holy Spirit will be active on campus reminding people of all that Jesus has done in their lives.

3) Pray for the student groups as this semester gets started. The first several weeks are critical in finding new friends and reaching students for Christ.

4) Pray for a revival among the Christian students. Pray that the revival will spread to an awakening for the whole campus.

5) Please remember to pray for the international population on campus. Pray that they will experience all that God has for them while they are in the U.S.A.



### **Mission Statement**

“The mission of Medaille College is to educate and develop empowered individuals for academic achievement, career success and civic engagement, thereby contributing to a healthy, diverse democracy.”





# Mercy College

## Dobbs Ferry, NY



**This Campus Has NOT Been Adopted**

DAY  
15

**Known Christian Groups on Campus:**

H.E.L.P. Ministries ..... Anna Tavernier

President ..... Timothy L. Hall  
Type ..... 4-year, Private Non-Profit  
Campus Housing ..... Yes  
Student Population ..... 10,557  
Student-to-Faculty Ratio ..... 17 to 1  
International Students (2019) ..... 111 from at least 37 Countries

Australia, Bangladesh, Brazil, Canada, China, Colombia, Ecuador, Egypt, Germany, Greece, India, Iran, Israel, Italy, Jamaica, Japan, Malaysia, Mexico, Nigeria, Norway, Pakistan, Philippines, Russia, South Korea, Spain, Sweden, Taiwan, Thailand, Turkey, United Kingdom, Venezuela, Vietnam.

### **\*Additional Campuses:**

Manhattan  
Bronx



### **Mission Statement**

“Mercy College is committed to providing motivated students the opportunity to transform their lives through higher education by offering liberal arts and professional programs in personalized and high quality learning environments, thus preparing students to embark on rewarding careers, to continue learning throughout their lives and to act ethically and responsibly in a changing world.”

### **Prayer Request:**

1) Please pray Luke 10.2 with us: *“The harvest is plentiful, but the laborers are few; therefore, plead with the Lord of the harvest to send out laborers into His harvest.”* (NASB)

2) Pray that as this semester begins the Holy Spirit will be active on campus reminding people of all that Jesus has done in their lives.

3) Pray for the student groups as this semester gets started. The first several weeks are critical in finding new friends and reaching students for Christ.

4) Pray for a revival among the Christian students. Pray that the revival will spread to an awakening for the whole campus.

5) Please remember to pray for the international population on campus. Pray that they will experience all that God has for them while they are in the U.S.A.





# Mesivta Torah Vodaath Rabbinical Seminary Brooklyn, NY

President ..... Unavailable  
Type ..... 4-year, Private Non-Profit  
Campus Housing ..... Yes  
Student Population ..... 405  
Student-to-Faculty Ratio ..... 29 to 1



## Prayer Request:

- 1) Please pray Luke 10.2 with us: *“The harvest is plentiful, but the laborers are few; therefore, plead with the Lord of the harvest to send out laborers into His harvest.”* (NASB)
- 2) Pray that as this semester begins the Holy Spirit will be active on campus reminding people of all that Jesus has done in their lives.
- 3) Pray for the student groups as this semester gets started. The first several weeks are critical in finding new friends and reaching students for Christ.
- 4) Pray for a revival among the Christian students. Pray that the revival will spread to an awakening for the whole campus.
- 5) Please remember to pray for the international population on campus. Pray that they will experience all that God has for them while they are in the U.S.A.



**This Campus Has NOT Been Adopted**

**Known Christian Groups on Campus:**

No Known Gospel Witness

DAY  
16



## **Mission Statement**

“The founders of MTVRS had one motivation: to provide scholastic and moral training for young Jewish men, in a world of conflicting ideologies and kaleidoscopic social change. It was the profound conviction of the men who received and executed the plans for the Mesivta that the truths and ideals revealed in the Bible, expounded upon in the Talmud, and elucidated by countless traditional commentaries, transcended the shifts of society with the veracity and vitality remaining undiminished through the ages.”



# Metropolitan College of New York

## New York, NY



**This Campus Has NOT Been Adopted**

**Known Christian Groups on Campus:**  
No Known Gospel Witness

DAY  
17

President ..... Joanne Passaro  
Type..... 4-year, Private Non-Profit  
Campus Housing ..... No  
Student Population ..... 980  
Student-to-Faculty Ratio ..... 10 to 1  
International Students (2019)..... 45 from at least 21 Countries  
Bangladesh, Canada, France, Germany, India, Jamaica, Nepal, Nigeria, Pakistan, Russia, Saudi Arabia, South Korea, Turkey.

**\*Additional Campus**  
Bronx, NY



### **Mission Statement**

“To provide a superior, experientially-based education that fosters personal and professional development, promotes social justice, and encourages positive change in workplaces and communities.”

### **Prayer Request:**

- 1) Please pray Luke 10.2 with us: *“The harvest is plentiful, but the laborers are few; therefore, plead with the Lord of the harvest to send out laborers into His harvest.”* (NASB)
- 2) Pray that as this semester begins the Holy Spirit will be active on campus reminding people of all that Jesus has done in their lives.
- 3) Pray for the student groups as this semester gets started. The first several weeks are critical in finding new friends and reaching students for Christ.
- 4) Pray for a revival among the Christian students. Pray that the revival will spread to an awakening for the whole campus.
- 5) Please remember to pray for the international population on campus. Pray that they will experience all that God has for them while they are in the U.S.A.





# Mildred Elley School-Albany Campus

## Albany, NY

CEO and President ..... John G. McGrath  
Type ..... 2-year, Private For-Profit  
Campus Housing ..... No  
Student Population ..... 360  
Student-to-Faculty Ratio ..... 15 to 1



### **Prayer Request:**

1) Please pray Luke 10.2 with us: *“The harvest is plentiful, but the laborers are few; therefore, plead with the Lord of the harvest to send out laborers into His harvest.”* (NASB)

2) Pray that as this semester begins the Holy Spirit will be active on campus reminding people of all that Jesus has done in their lives.

3) Pray for the student groups as this semester gets started. The first several weeks are critical in finding new friends and reaching students for Christ.

4) Pray for a revival among the Christian students. Pray that the revival will spread to an awakening for the whole campus.

5) Please remember to pray for the international population on campus. Pray that they will experience all that God has for them while they are in the U.S.A.



**This Campus Has NOT Been Adopted**

**Known Christian Groups on Campus:**

No Known Gospel Witness

DAY  
18



### **Mission Statement**

“The mission of Mildred Elley is to provide quality career education and technical training to allow students of diverse educational, cultural, and personal backgrounds to become successful in an ever-changing global economy. Mildred Elley strives to afford students quality placement opportunities and instill in all of our graduates a desire for lifelong education and learning.”





# Mildred Elley-New York Campus

## New York, NY

CEO and President.....John G. McGrath  
Type .....2-year, Private For-Profit  
Campus Housing.....No  
Student Population.....1,056  
Student-to-Faculty Ratio.....39 to 1



### **Prayer Request:**

- 1) Please pray Luke 10.2 with us: *“The harvest is plentiful, but the laborers are few; therefore, plead with the Lord of the harvest to send out laborers into His harvest.”* (NASB)
- 2) Pray that as this semester begins the Holy Spirit will be active on campus reminding people of all that Jesus has done in their lives.
- 3) Pray for the student groups as this semester gets started. The first several weeks are critical in finding new friends and reaching students for Christ.
- 4) Pray for a revival among the Christian students. Pray that the revival will spread to an awakening for the whole campus.
- 5) Please remember to pray for the international population on campus. Pray that they will experience all that God has for them while they are in the U.S.A.



**This Campus Has NOT Been Adopted**

**Known Christian Groups on Campus:**

No Known Gospel Witness

DAY  
19



### **Vision and Mission Statement**

“The mission of Mildred Elley is to provide quality career education and technical training to allow students of diverse educational, cultural, and personal backgrounds to become successful in an ever-changing global economy. Mildred Elley strives to afford students quality placement opportunities and instill in all of our graduates a desire for lifelong education and learning.”





# Mirrer Yeshiva Cent Institute

## Brooklyn, NY

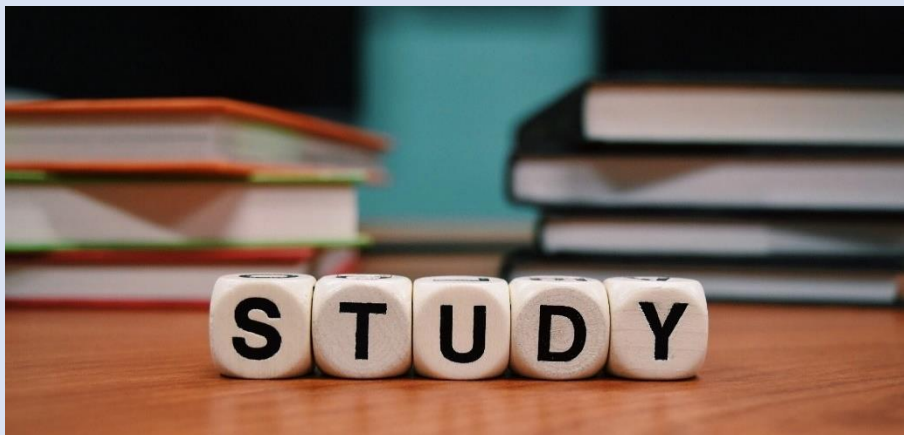


**This Campus Has NOT Been Adopted**

**Known Christian Groups on Campus:**  
No Known Gospel Witness

DAY  
20

President ..... Unavailable  
Type ..... 4-year, Private Non-Profit  
Campus Housing ..... Yes  
Student Population ..... 148  
Student-to-Faculty Ratio ..... 7 to 1  
“There are approximately 9 international students at Mirrer Yeshiva Cent Institute; they make up 5.2% of all total students.”



### **Prayer Request:**

- 1) Please pray Luke 10.2 with us: *“The harvest is plentiful, but the laborers are few; therefore, plead with the Lord of the harvest to send out laborers into His harvest.”* (NASB)
- 2) Pray that as this semester begins the Holy Spirit will be active on campus reminding people of all that Jesus has done in their lives.
- 3) Pray for the student groups as this semester gets started. The first several weeks are critical in finding new friends and reaching students for Christ.
- 4) Pray for a revival among the Christian students. Pray that the revival will spread to an awakening for the whole campus.
- 5) Please remember to pray for the international population on campus. Pray that they will experience all that God has for them while they are in the U.S.A.



### **Mission Statement**

“The mission of Mirrer Yeshiva is to educate its students to be Talmudic scholars who manifest critical and creative thinking, effective communication skills and the ability to make informed value judgements. The M.Y. strives to serve its students by offering a challenging course of studies, superior teaching, close teacher-student interaction and a postsecondary Talmudic education of the highest caliber. At the same time, our Institute has always placed great stress on the attainment of the highest level of personal piety, character and moral integrity. In carrying out its mission, Mirrer Yeshiva has always addressed the need to strengthen the Torah community at large by providing it with leaders, teachers, Rabbis, scholars and well-educated laymen.”





# Mohawk Valley Community College

## Utica, NY

President ..... Randall J. VanWagoner  
Type ..... 2-year, Public  
Campus Housing ..... Yes  
Student Population ..... 6,007  
Student-to-Faculty Ratio ..... 17 to 1  
“There are approximately 44 international students at MVCC; they make up 0.7% of all total students.”

### \*Additional Campus:

Rome, NY



### Prayer Request:

1) Please pray Luke 10.2 with us: *“The harvest is plentiful, but the laborers are few; therefore, plead with the Lord of the harvest to send out laborers into His harvest.”* (NASB)

2) Pray that as this semester begins the Holy Spirit will be active on campus reminding people of all that Jesus has done in their lives.

3) Pray for the student groups as this semester gets started. The first several weeks are critical in finding new friends and reaching students for Christ.

4) Pray for a revival among the Christian students. Pray that the revival will spread to an awakening for the whole campus.

5) Please remember to pray for the international population on campus. Pray that they will experience all that God has for them while they are in the U.S.A.



**This Campus Has NOT Been Adopted**

**Known Christian Groups on Campus:**

No Known Gospel Witness

DAY  
21



### Mission Statement

“Mohawk Valley Community College provides accessible, high-quality educational opportunities to meet the diverse needs of our students. We are the community’s college, committed to student success through partnerships, transfer and career pathways, and personal enrichment.”





# Molloy College

## Rockville Centre, NY



**This Campus Has NOT Been Adopted**

DAY  
22

### **Known Christian Groups on Campus:**

Vice President, Mission and Ministry... Catherine Muscente  
Campus Minister.....Michael Malinowski  
Campus Minister.....Michelle Lthgow  
InterVarsity.....Paulina Nunez

President .....James P. Lentini  
Type .....4-year, Private Non-Profit  
Campus Housing.....Yes  
Student Population.....5,113  
Student-to-Faculty Ratio.....10 to 1  
International Students (2019) .....28 from at least 13 Countries  
China, France, India, Indonesia, Italy, Japan, Nigeria, Philip-  
pines, South Korea, Spain, Sweden, United Kingdom, Venezuela.



### **Mission Statement**

“Molloy College, an independent, Catholic college rooted in the Dominican tradition of study, spirituality, service and community, is committed to academic excellence with respect for each person. Through transformative education, Molloy promotes a lifelong search for truth and the development of ethical leadership.”

### **Prayer Request:**

1) Please pray Luke 10.2 with us: *“The harvest is plentiful, but the laborers are few; therefore, plead with the Lord of the harvest to send out laborers into His harvest.”* (NASB)

2) Pray that as this semester begins the Holy Spirit will be active on campus reminding people of all that Jesus has done in their lives.

3) Pray for the student groups as this semester gets started. The first several weeks are critical in finding new friends and reaching students for Christ.

4) Pray for a revival among the Christian students. Pray that the revival will spread to an awakening for the whole campus.

5) Please remember to pray for the international population on campus. Pray that they will experience all that God has for them while they are in the U.S.A.



# Monroe College

## Bronx, NY



**This Campus Has NOT Been Adopted**

**Known Christian Groups on Campus:**

No Known Gospel Witness

DAY  
23

President..... Marc Jerome  
Type ..... 4-year, Private Non-Profit  
Campus Housing ..... Yes  
Student Population ..... 6,517  
Student-to-Faculty Ratio ..... 16 to 1

International Students (2019)..... 948 from at least 43 Countries

Australia, Bahamas, Bangladesh, Brazil, Canada, China, Ecuador, Egypt, France, Germany, Hong Kong, India, Israel, Italy, Jamaica, Japan, Kenya, Malaysia, Mexico, Nepal, Netherlands, Nigeria, Norway, Pakistan, Peru, Philippines, Russia, Saudi Arabia, South Korea, Spain, Sri Lanka, Sweden, Taiwan, Thailand, Turkey, Ukraine, United Kingdom, Venezuela, Vietnam.

**\*Additional Campuses:**

New Rochelle, NY

St. Lucia



**Prayer Request:**

1) Please pray Luke 10.2 with us: *“The harvest is plentiful, but the laborers are few; therefore, plead with the Lord of the harvest to send out laborers into His harvest.”* (NASB)

2) Pray that as this semester begins the Holy Spirit will be active on campus reminding people of all that Jesus has done in their lives.

3) Pray for the student groups as this semester gets started. The first several weeks are critical in finding new friends and reaching students for Christ.

4) Pray for a revival among the Christian students. Pray that the revival will spread to an awakening for the whole campus.

5) Please remember to pray for the international population on campus. Pray that they will experience all that God has for them while they are in the U.S.A.



**Mission Statement**

“Monroe College, founded in 1933, is a national leader in higher education access, affordability, and attainment. We believe in the power of education to facilitate social mobility and transform communities, and embrace our responsibility to advocate national policies that serve students’ best interests. We are proud of our outcomes and unique caring environment, especially for first-generation college students, newly arriving immigrants, and international students. Our innovative curriculum, taught by experienced industry professionals, integrates local, national, and global perspectives. Our academic programs align with industries that drive the New York and international economies that we serve. Our graduates are prepared for continued scholarship, professional growth, and career advancement.”





# Monroe Community College

## Rochester, NY



**This Campus Has NOT Been Adopted**

**Known Christian Groups on Campus:**

No Known Gospel Witness

DAY  
24

President..... DeAnna R. Burt-Nanna  
Type..... 2-year, Public  
Campus Housing ..... Yes  
Student Population ..... 11,572  
Student-to-Faculty Ratio ..... 20 to 1  
“There are approximately 119 international students at Monroe Community College; they make up 1.0% of all total students.”

### **\*Other Locations**

Brighton  
Downtown Campus, Rochester



### **Prayer Request:**

1) Please pray Luke 10.2 with us: “*The harvest is plentiful, but the laborers are few; therefore, plead with the Lord of the harvest to send out laborers into His harvest.*” (NASB)

2) Pray that as this semester begins the Holy Spirit will be active on campus reminding people of all that Jesus has done in their lives.

3) Pray for the student groups as this semester gets started. The first several weeks are critical in finding new friends and reaching students for Christ.

4) Pray for a revival among the Christian students. Pray that the revival will spread to an awakening for the whole campus.

5) Please remember to pray for the international population on campus. Pray that they will experience all that God has for them while they are in the U.S.A.



### **Mission Statement**

“Monroe Community College, through access to affordable academic programs, leads excellence and innovation in higher education, inspires diverse students to transform their lives and communities, drives regional economic development, and builds global engagement and understanding.”





# Montefiore School of Nursing

## Mount Vernon, NY



**This Campus Has NOT Been Adopted**

**Known Christian Groups on Campus:**

No Known Gospel Witness

DAY  
25

Dean ..... Rebecca Greer  
Type ..... 2-year, Private Non-Profit  
Campus Housing ..... No  
Student Population ..... 162  
Student-to-Faculty Ratio ..... 1 to 1



### **Mission Statement**

“The mission of the School of Nursing is to provide a quality education in the art and science of nursing, through collaborative efforts with the Montefiore Medical Center. Our graduate will be a caring, competent, compassionate nurse prepared to meet the health and wellness needs of multicultural communities.”

### **Prayer Request:**

1) Please pray Luke 10.2 with us: *“The harvest is plentiful, but the laborers are few; therefore, plead with the Lord of the harvest to send out laborers into His harvest.”* (NASB)

2) Pray that as this semester begins the Holy Spirit will be active on campus reminding people of all that Jesus has done in their lives.

3) Pray for the student groups as this semester gets started. The first several weeks are critical in finding new friends and reaching students for Christ.

4) Pray for a revival among the Christian students. Pray that the revival will spread to an awakening for the whole campus.

5) Please remember to pray for the international population on campus. Pray that they will experience all that God has for them while they are in the U.S.A.





# Mount Saint Mary College

## Newburgh, NY



**This Campus Has NOT Been Adopted**

DAY  
26

**Known Christian Groups on Campus:**

Chaplain, Director of Campus Ministry . Fr. Gregoire Fluet

Dean.....Jason N. Adsit  
Type.....4-year, Private Non-Profit  
Campus Housing.....Yes  
Student Population.....2,236  
Student-to-Faculty Ratio.....13 to 1  
International Students (2019) .....13 from at least 5 Countries  
Canada, China, Ecuador, India, South Korea.



### **Mission Statement**

“As reflected in its motto “Doce Me Veritatem” (Teach Me the Truth) Mount Saint Mary College, founded by the Dominican Sisters of Newburgh, is an independent, coeducational institution committed to providing students with a liberal arts education to prepare them for lives of leadership and service. Through a variety of majors and professional programs, students are also prepared for career entry or graduate and professional studies.”

### **Prayer Request:**

- 1) Please pray Luke 10.2 with us: *“The harvest is plentiful, but the laborers are few; therefore, plead with the Lord of the harvest to send out laborers into His harvest.”* (NASB)
- 2) Pray that as this semester begins the Holy Spirit will be active on campus reminding people of all that Jesus has done in their lives.
- 3) Pray for the student groups as this semester gets started. The first several weeks are critical in finding new friends and reaching students for Christ.
- 4) Pray for a revival among the Christian students. Pray that the revival will spread to an awakening for the whole campus.
- 5) Please remember to pray for the international population on campus. Pray that they will experience all that God has for them while they are in the U.S.A.



# Nassau Community College

## Garden City, NY

President .....Jermaine F. Williams  
Type .....2-year, Public  
Campus Housing.....No  
Student Population.....16,650  
Student-to-Faculty Ratio.....18 to 1  
“There are approximately 184 international students at Nassau Community College; they make up 1.1% of all total students.”



### Prayer Request:

- 1) Please pray Luke 10.2 with us: “*The harvest is plentiful, but the laborers are few; therefore, plead with the Lord of the harvest to send out laborers into His harvest.*” (NASB)
- 2) Pray that as this semester begins the Holy Spirit will be active on campus reminding people of all that Jesus has done in their lives.
- 3) Pray for the student groups as this semester gets started. The first several weeks are critical in finding new friends and reaching students for Christ.
- 4) Pray for a revival among the Christian students. Pray that the revival will spread to an awakening for the whole campus.
- 5) Please remember to pray for the international population on campus. Pray that they will experience all that God has for them while they are in the U.S.A.



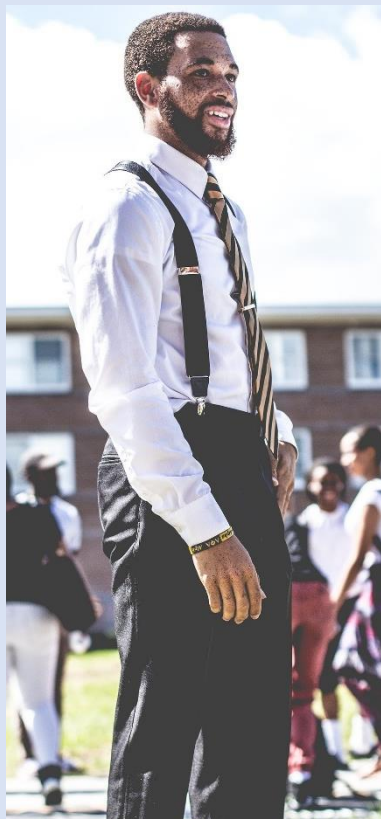
**This Campus Has NOT Been Adopted**

### **Known Christian Groups on Campus:**

InterVarsity..... Jackie Turner (Advisor)  
Newman Catholic Society..... Marynita Anderson (Advisor)

### **Mission Statement**

“Nassau Community College, a constituent member of the State University of New York system, is a comprehensive, full-opportunity institution of higher education. All who can benefit from its resources have the opportunity to expand their knowledge and skills and to pursue the goal of lifelong learning. The College is dedicated to high quality, low-cost education and career preparation to meet the needs and interests of the community it serves. It is committed to academic excellence and the dignity and worth of the individual. To this end, Nassau Community College offers Associate in Arts, Associate in Science, and Associate in Applied Science degrees, as well as Certificate and continuing education programs. Its curricula span the liberal arts and sciences, as well as pre-professional and professional areas, for the benefit of a diverse population.”



DAY  
27



# Nazareth College

## Rochester, NY



**This Campus Has NOT Been Adopted**

DAY  
28

### **Known Christian Groups on Campus:**

Director of the Center for Spirituality and Catholic Chaplain

.....Jamie R. Fazio

Protestant Chaplain.....Nadia L. Mullin

President..... Elizabeth Paul  
 Type..... 4-year, Private Non-Profit  
 Campus Housing ..... Yes  
 Student Population ..... 2,979  
 Student-to-Faculty Ratio ..... 9 to 1  
International Students (2019)..... 65 from at least 20 Countries  
 Australia, Brazil, Canada, China, Colombia, Egypt, France, India,  
 Italy, Japan, Peru, Saudi Arabia, Spain, United Kingdom, Vietnam.



### **Prayer Request:**

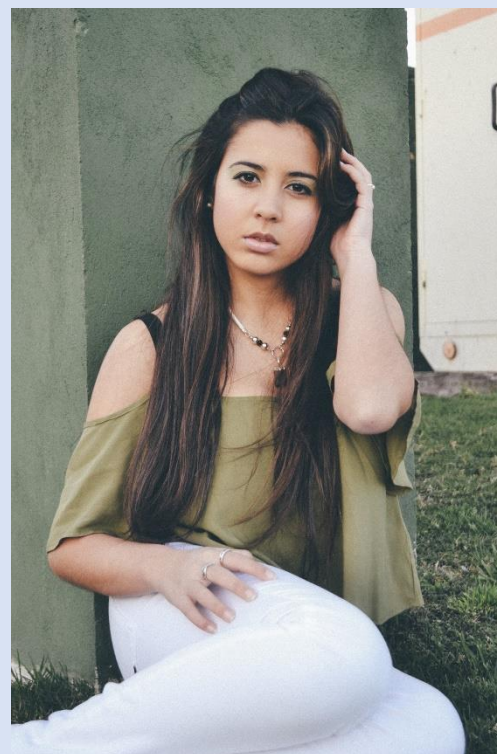
1) Please pray Luke 10.2 with us: *“The harvest is plentiful, but the laborers are few; therefore, plead with the Lord of the harvest to send out laborers into His harvest.”* (NASB)

2) Pray that as this semester begins the Holy Spirit will be active on campus reminding people of all that Jesus has done in their lives.

3) Pray for the student groups as this semester gets started. The first several weeks are critical in finding new friends and reaching students for Christ.

4) Pray for a revival among the Christian students. Pray that the revival will spread to an awakening for the whole campus.

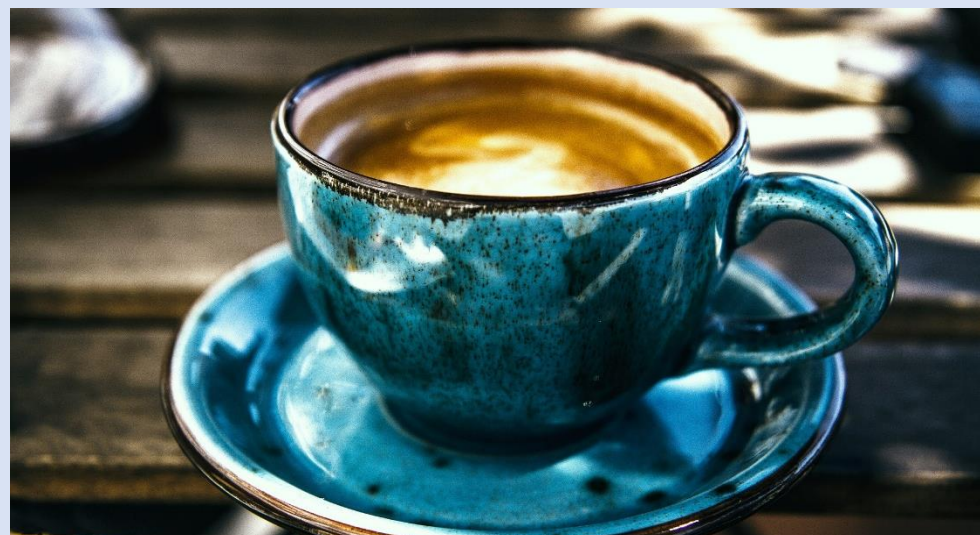
5) Please remember to pray for the international population on campus. Pray that they will experience all that God has for them while they are in the U.S.A.



### **Vision and Mission Statement**

“The mission of Nazareth College is to provide a learning community that educates students in the liberal arts, sciences, visual and performing arts, and professional fields, fostering commitment to a life informed by intellectual, ethical, spiritual, and aesthetic values; to develop skills necessary for the pursuit of meaningful careers; and to inspire dedication to the ideal of service to their communities.

Nazareth seeks students who want to make a difference in their own world and the world around them, and encourages them to develop the understanding, commitment, and confidence to lead fully informed and actively engaged lives”





# New York Academy of Art

## New York, NY

President ..... David Kratz  
Type ..... 4-year, Private Non-Profit  
Campus Housing ..... No  
Student Population ..... 122  
Student-to-Faculty Ratio ..... Not Available  
“There are approximately 16 international students at New York Academy of Art; they make up 12.8% of all total students.”



### Prayer Request:

1) Please pray Luke 10.2 with us: “*The harvest is plentiful, but the laborers are few; therefore, plead with the Lord of the harvest to send out laborers into His harvest.*” (NASB)

2) Pray that as this semester begins the Holy Spirit will be active on campus reminding people of all that Jesus has done in their lives.

3) Pray for the student groups as this semester gets started. The first several weeks are critical in finding new friends and reaching students for Christ.

4) Pray for a revival among the Christian students. Pray that the revival will spread to an awakening for the whole campus.

5) Please remember to pray for the international population on campus. Pray that they will experience all that God has for them while they are in the U.S.A.



This Campus Has NOT Been Adopted

Known Christian Groups on Campus:

No Known Gospel Witness

DAY  
29



### Mission Statement

“The New York Academy of Art is a graduate school that combines intensive technical training in the fine arts with active critical discourse. We believe that rigorously trained artists are best able to realize their artistic vision. Academy students are taught traditional methods and techniques and encouraged to use these skills to make vital contemporary art. The Academy serves as a creative and intellectual center for all artists dedicated to highly skilled, conceptually aware figurative and representational art.”





# New York Automotive and Diesel Institute Jamaica, NY

President ..... Patrick Hart  
Type..... 2-year, Private For-Profit  
Campus Housing ..... No  
Student Population ..... 271  
Student-to-Faculty Ratio ..... 18 to 1



## Prayer Request:

- 1) Please pray Luke 10.2 with us: *“The harvest is plentiful, but the laborers are few; therefore, plead with the Lord of the harvest to send out laborers into His harvest.”* (NASB)
- 2) Pray that as this semester begins the Holy Spirit will be active on campus reminding people of all that Jesus has done in their lives.
- 3) Pray for the student groups as this semester gets started. The first several weeks are critical in finding new friends and reaching students for Christ.
- 4) Pray for a revival among the Christian students. Pray that the revival will spread to an awakening for the whole campus.
- 5) Please remember to pray for the international population on campus. Pray that they will experience all that God has for them while they are in the U.S.A.



**This Campus Has NOT Been Adopted**

**Known Christian Groups on Campus:**

No Known Gospel Witness

DAY  
30



## **Vision and Mission Statement**

“NYADI THE COLLEGE OF TRANSPORTATION TECHNOLOGY’s mission is to provide educational opportunity to students from non-traditional backgrounds who have been underrepresented in higher education and to provide these students with the technical skills and knowledge necessary for successful career entry, development and advancement.”



# New York Chiropractic College -now- Northeast College of Health Science Seneca Falls, NY

President .....Michael A. Mestan  
Type .....4-year, Private Non-Profit  
Campus Housing.....Yes  
Student Population.....812  
Student-to-Faculty Ratio.....Not Available  
“There are approximately 154 international students at New York Chiropractic College; they make up 17.2% of all total students.”



## Prayer Request:

- 1) Please pray Luke 10.2 with us: *“The harvest is plentiful, but the laborers are few; therefore, plead with the Lord of the harvest to send out laborers into His harvest.”* (NASB)
- 2) Pray that as this semester begins the Holy Spirit will be active on campus reminding people of all that Jesus has done in their lives.
- 3) Pray for the student groups as this semester gets started. The first several weeks are critical in finding new friends and reaching students for Christ.
- 4) Pray for a revival among the Christian students. Pray that the revival will spread to an awakening for the whole campus.
- 5) Please remember to pray for the international population on campus. Pray that they will experience all that God has for them while they are in the U.S.A.



This Campus Has NOT Been Adopted

Known Christian Groups on Campus:  
Christian Chiropractic Club.....?



## Our Mission

“Northeast College of Health Sciences is committed to academic excellence, leadership, and professional best practices.”

## Our Vision

“Northeast College of Health Sciences will be recognized as a leading institution for the education and training of natural healthcare professionals and academicians who embrace interprofessional collaboration.”





# New York College of Health Professions Syosset, NY



**This Campus Has NOT Been Adopted**

**Known Christian Groups on Campus:**

No Known Gospel Witness

DAY  
32

President .....A Li Song  
Type .....4-year, Private Non-Profit  
Campus Housing.....No  
Student Population.....505  
Student-to-Faculty Ratio.....15 to 1



## **Prayer Request:**

1) Please pray Luke 10.2 with us: *“The harvest is plentiful, but the laborers are few; therefore, plead with the Lord of the harvest to send out laborers into His harvest.”* (NASB)

2) Pray that as this semester begins the Holy Spirit will be active on campus reminding people of all that Jesus has done in their lives.

3) Pray for the student groups as this semester gets started. The first several weeks are critical in finding new friends and reaching students for Christ.

4) Pray for a revival among the Christian students. Pray that the revival will spread to an awakening for the whole campus.

5) Please remember to pray for the international population on campus. Pray that they will experience all that God has for them while they are in the U.S.A.



## **Mission Statement**

“New York College of Health Professions is committed to offering quality programs in health, science and the arts. The mission has three main components.

Education: To provide students with the knowledge and skills to enable them to become expert practitioners in their fields....

Service: To provide clinical and pharmacological services to the community as a complement to the programs of professional education....

Research: To develop and implement with outside [party's] new product development in health care, wellness and quality of life products.”



# New York College of Podiatric Medicine

## New York, NY

President ..... Louis L. Levine  
Type..... 4-year, Private Non-Profit  
Campus Housing ..... Yes  
Student Population ..... 330  
Student-to-Faculty Ratio ..... Not Available  
“There are approximately 13 international students at New York College of Podiatric Medicine; they make up 3.7% of all total students.”



### Prayer Request:

- 1) Please pray Luke 10.2 with us: *“The harvest is plentiful, but the laborers are few; therefore, plead with the Lord of the harvest to send out laborers into His harvest.”* (NASB)
- 2) Pray that as this semester begins the Holy Spirit will be active on campus reminding people of all that Jesus has done in their lives.
- 3) Pray for the student groups as this semester gets started. The first several weeks are critical in finding new friends and reaching students for Christ.
- 4) Pray for a revival among the Christian students. Pray that the revival will spread to an awakening for the whole campus.
- 5) Please remember to pray for the international population on campus. Pray that they will experience all that God has for them while they are in the U.S.A.



**This Campus Has NOT Been Adopted**

**Known Christian Groups on Campus:**

No Known Gospel Witness

DAY  
33

### **Mission Statement**

“It is the College's mission to provide, to students seeking careers as doctors of podiatric medicine, a comprehensive medical educational program specializing in the medical and surgical management of the lower extremity, with the ability to diagnose systemic diseases and their lower extremity manifestations. The College will prepare students for eligibility for Graduate Medical Education, licensure and practice. Furthermore, it is the College's mission to promote state-of-the art patient care in affiliated facilities, and to pursue research to continuously advance the art and science of podiatric medicine.”

