

# **PennDel Ministry Network**

## **31 Day Prayer Guide**



### **Volume IV**

Dear Friends of Missions,

Thank you once again for praying. It is not the “least” we can do, it is the “best” thing we can do. So, thank You for having interest in this generation of college students.

You are reading the 4<sup>th</sup> installment of the Penn-Del Ministry Network Prayer Guide. (For previous issues please go to our website <https://blog.adopt-a-campus.org>.) With this edition, we have crossed well over the one hundred school mark. Thank You for sticking with it. We certainly do hope to cover every school in Pennsylvania. The first edition covered Delaware, the second edition covered Historical Black Colleges and Universities in PA as well as the University of Pittsburgh and the Penn State systems. The third edition covered the Pennsylvania Department of Higher Education Universities, with a few other schools to round out the publication.

With this edition, we pick up where we left off in the alphabetical list available from the PA Department of Higher Education. You will notice that it is not strictly alphabetical. That is due to several categories being used at the same time. We have several community colleges mixed in with more traditional colleges and universities. See the next page for the complete list.

As with the other guides we are still concentrating on using Luke 10.2 as our prayer focus. We are honoring Jesus’ request, that we ask the Father, the Lord of the harvest, to send forth laborers into His harvest field. We believe God wants to do a great work among college students. He has done it before and we know He can do it again.

Also, I just want to say a word about praying and asking God to show you how to intercede for each school. Remember, the prayer guide is just a guide. Allow the Holy Spirit to lead you into areas of prayer that He reveals to You.

One closing note. I want to remind you that we have a daily blog (<https://blog.adopt-a-campus.org>) that highlights a new school for prayer emphasis each day. Once you find the blog you can also sign up for a daily email reminder to pray.

Thank You again for investing time into this next generation. Only eternity will tell what we helped along and what we were able to hinder.

Here is this month’s list.

Be Blessed.

Joe and Heidi Barrale  
Assemblies of God U.S. Missionaries  
Chi Alpha / Adopt-A-Campus

## A List of Schools Included in this Month's Guide

Day 1 Allegany College of Maryland, Everett, PA

Day 2 Montgomery County Community College

Day 3 Northampton Community College

Day 4 Pennsylvania Highlands Community College

Day 5 Reading Area Community College

Day 6 Westmoreland County Community College

Day 7 Byzantine Catholic Seminary

Day 8 DeVry University

Day 9 Eastern Mennonite University

Day 10 Eastern University

Day 11 Elizabethtown College

Day 12 Strayer University

Day 13 Geisinger Commonwealth School of Medicine

Day 14 Albright College

Day 15 Allegheny College

Day 16 The American College of Financial Services

Day 17 Franklin & Marshall College

Day 18 Gannon University

Day 19 Bryn Athyn College

Day 20 Bryn Mawr College

Day 21 Cedar Crest College

Day 22 Central Penn College

Day 23 Geneva College

Day 24 Chatham University

Day 25 Chestnut Hill College

Day 26 Clarks Summit University

Day 27 Curtis Institute of Music

Day 28 Delaware Valley University

Day 29 DeSales University

Day 30 Dickinson College

Day 31 Duquesne University

# Allegany College of Maryland Everett, PA



**This Campus Has Been Adopted By:**  
Everett AG, Everett, PA

DAY  
1

**Known Christian Groups on Campus:**  
Information is Unavailable

## **Covid-19 Update:**

“All offices and buildings are open. ACM’s regular business hours are 8:30 a.m. to 4:30 p.m. Monday through Friday ... Students, employees, and visitors to campus must follow the College’s health and safety measures to reduce the spread of COVID-19 – the wearing of face masks or face coverings, practicing proper hand hygiene and social distancing, and self-monitoring of symptoms. Students are reminded to conduct a daily symptom self-check.”



## Prayer Requests:

Remember to pray in the Spirit and ask God to show you how you should be praying for this school.

- 1) Once again we are praying Luke 10.2 *“The harvest is plentiful, but the laborers are few; therefore, beseech the Lord of the harvest to send out laborers into His harvest.”*
- 2) Most students are home for the winter break. Please pray that the Christian students will not forget about God during this time.
- 3) Pray for the Christmas season to be a natural, Christ centered, opportunity for Christian students to speak freely to their non-Christian family about Christ.
- 4) Pray for the return to school after winter break.
  - a) Ask God to prepare the Christian laborers for the new semester.
  - b) Please pray that Covid-19 will end soon. That the students would not have to put up with that added stress for another whole semester.
- 5) Students are still feeling the stress. Ask God to direct Christian students to have “God” appointments with non-Christian student.





# Montgomery County Community College

## Blue Bell, PA



**This Campus Has NOT Been Adopted**

DAY  
2

**Known Christian Groups on Campus:**

Info is not available to non-students

President.....Victoria L. Bastecki  
Type .....2-year, Public  
Campus Housing.....Yes  
Student Population.....10,309  
Student-to-Faculty Ratio.....16 to 1

### Blue Bell Campus

340 DeKalb Pike, Blue Bell, PA 19422

### Pottstown Campus

101 College Drive, Pottstown, PA 19464

### The Culinary Arts Institute

1400 Forty Foot Road, Lansdale, PA 19446



#### Prayer Requests:

Remember to pray in the Spirit and ask God to show you how you should be praying for this school.

- 1) Once again we are praying Luke 10.2 *“The harvest is plentiful, but the laborers are few; therefore, beseech the Lord of the harvest to send out laborers into His harvest.”*
- 2) Most students are home for the winter break. Please pray that the Christian students will not forget about God during this time.
- 3) Pray for the Christmas season to be a natural, Christ centered, opportunity for Christian students to speak freely to their non-Christian family about Christ.
- 4) Pray for the return to school after winter break.
  - a) Ask God to prepare the Christian laborers for the new semester.
  - b) Please pray that Covid-19 will end soon. That the students would not have to put up with that added stress for another whole semester.
- 5) Students are still feeling the stress. Ask God to direct Christian students to have “God” appointments with non-Christian student.

#### **Covid-19 Update:**

“Our spring 2021 courses will be [delivered online](#) for the 15-week, first 7-week, and second 7-week. We offer synchronous (real-time), asynchronous (self-paced) and a limited number of classes in a hybrid format (blend of online and on campus laboratories).”





# Northampton County Area Community College Bethlehem & Monroe, PA



## This Campus Has Been Adopted By:

Innovation Church AG, Cresco, PA - Monroe Campus  
El Shaddai AG, Nazareth, PA - Bethlehem Campus

DAY  
3

## Known Christian Groups on Campus:

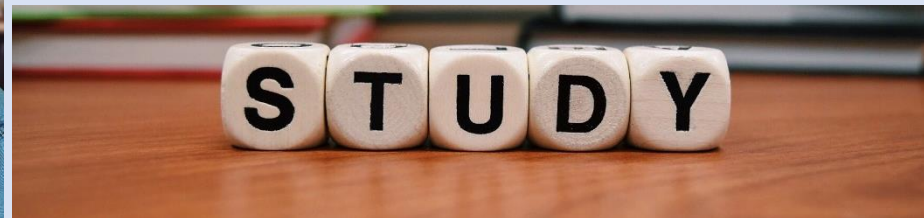
Bethlehem Campus

Christian Fellowship.....Eileen Finelli (Advisor)

Monroe Campus

Christian Fellowship & Outreach...Catherine Morgan (Advisor)

President..... Mark Erickson  
Type..... 2-year, Public  
Campus Housing ..... Yes  
Student Population ..... 9,800  
Student-to-Faculty Ratio ..... 19 to 1



## Covid-19 Update:

“Northampton Community College offers course formats to fit your life, allowing you to select the best options for you. Formats range from on-site, online and hybrid, a combination of both. Some online courses meet at a scheduled time, while others are self-paced with weekly milestones.”

## Prayer Requests:

Remember to pray in the Spirit and ask God to show you how you should be praying for this school.

- 1) Once again we are praying Luke 10.2 *“The harvest is plentiful, but the laborers are few; therefore, beseech the Lord of the harvest to send out laborers into His harvest.”*
- 2) Most students are home for the winter break. Please pray that the Christian students will not forget about God during this time.
- 3) Pray for the Christmas season to be a natural, Christ centered, opportunity for Christian students to speak freely to their non-Christian family about Christ.
- 4) Pray for the return to school after winter break.
  - a) Ask God to prepare the Christian laborers for the new semester.
  - b) Please pray that Covid-19 will end soon. That the students would not have to put up with that added stress for another whole semester.
- 5) Students are still feeling the stress. Ask God to direct Christian students to have “God” appointments with non-Christian student.





# Pennsylvania Highlands Community College Johnstown, PA



## This Campus Has Been Adopted By:

Kantner AG, Kantner, PA

DAY  
4

## Known Christian Groups on Campus:

Cru ..... Yvette Madison (Advisor)

President..... Steve Nunez  
Type ..... 2-year, Public  
Campus Housing..... No  
Student Population ..... 2,752  
Student-to-Faculty Ratio..... 17 to 1

## Satellite Locations:

Blair Center  
Central Park Center  
Ebensburg Center  
Huntingdon Center  
Somerset Center  
Online College



## Prayer Requests:

Remember to pray in the Spirit and ask God to show you how you should be praying for this school.

- 1) Once again we are praying Luke 10.2 *"The harvest is plentiful, but the laborers are few; therefore, beseech the Lord of the harvest to send out laborers into His harvest."*
- 2) Most students are home for the winter break. Please pray that the Christian students will not forget about God during this time.
- 3) Pray for the Christmas season to be a natural, Christ centered, opportunity for Christian students to speak freely to their non-Christian family about Christ.
- 4) Pray for the return to school after winter break.
  - a) Ask God to prepare the Christian laborers for the new semester.
  - b) Please pray that Covid-19 will end soon. That the students would not have to put up with that added stress for another whole semester.
- 5) Students are still feeling the stress. Ask God to direct Christian students to have "God" appointments with non-Christian student.

## Covid-19 Update:

**"Split Section Instruction:** (1/2 Face-to-Face and 1/2 ZOOM instruction)

**Virtual Classroom Instruction:** Students will participate in class virtually through ZOOM at a scheduled day and time each week.

**Online Instruction:** Online classes will be taught 100% online and will not be scheduled to meet on specific days or times.

**In-Person Instruction:** In-person classes meet physically on-site each week.

**Hybrid Instruction:** Hybrid classes are a combination of in-person and online instruction."



# Reading Area Community College Reading, PA



**This Campus Has Not Been Adopted**

DAY  
5

President ..... Susan D. Looney  
Type ..... 2-year, Public  
Campus Housing..... No  
Student Population..... 4,280  
Student-to-Faculty Ratio..... 20 to 1



## **Known Christian Groups on Campus:**

The RACC Christian Network ..... Jodi Greene (Advisor)

## **Covid-19 Update:**

“As the end of the fall semester approaches, a semester unlike any of us have experienced in our educational careers, we want to reassure you that we will continue to remain focused on the four hallmarks of this institution, Access, Opportunity, Excellence and Hope. As outlined in our Mission Statement, RACC will continue to build communities of learning committed to educational growth and to the economic vitality in our region.”

## Prayer Requests:

Remember to pray in the Spirit and ask God to show you how you should be praying for this school.

- 1) Once again we are praying Luke 10.2 *“The harvest is plentiful, but the laborers are few; therefore, beseech the Lord of the harvest to send out laborers into His harvest.”*
- 2) Most students are home for the winter break. Please pray that the Christian students will not forget about God during this time.
- 3) Pray for the Christmas season to be a natural, Christ centered, opportunity for Christian students to speak freely to their non-Christian family about Christ.
- 4) Pray for the return to school after winter break.
  - a) Ask God to prepare the Christian laborers for the new semester.
  - b) Please pray that Covid-19 will end soon. That the students would not have to put up with that added stress for another whole semester.
- 5) Students are still feeling the stress. Ask God to direct Christian students to have “God” appointments with non-Christian student.





# Westmoreland County Community College Youngwood, PA



**This Campus Has Been Adopted By:**  
New Life Center, Ford City, PA (New Kensington)

DAY  
6

**Known Christian Groups on Campus:**  
ReachOut Christian Club .....Lauren Eicher (Advisor)

President ..... Tuesday Stanley  
Type ..... 2-year, Public  
Campus Housing ..... No  
Student Population ..... 4,645  
Student-to-Faculty Ratio ..... 14 to 1

## **Satellite Locations:**

Mt. Pleasant (Director) ..... Rebecca Parker  
Uniontown (Director) ..... Lori Jacobs  
Indiana, PA (Director) ..... Jennifer Eckels  
Latrobe (Director) ..... Janet Hoffer  
Export (Director) ..... Tameka King-Buchak  
New Kingston (Director) ..... Patrick Coulson  
Smithton:  
    Director for Fire/Rescue/EMS ..... Marc Jackson  
    Director for Law Enforcement/Police Academy  
    ..... Franklin Newill III

## Prayer Requests:

Remember to pray in the Spirit and ask God to show you how you should be praying for this school.

- 1) Once again we are praying Luke 10.2 *“The harvest is plentiful, but the laborers are few; therefore, beseech the Lord of the harvest to send out laborers into His harvest.”*
- 2) Most students are home for the winter break. Please pray that the Christian students will not forget about God during this time.
- 3) Pray for the Christmas season to be a natural, Christ centered, opportunity for Christian students to speak freely to their non-Christian family about Christ.
- 4) Pray for the return to school after winter break.
  - a) Ask God to prepare the Christian laborers for the new semester.
  - b) Please pray that Covid-19 will end soon. That the students would not have to put up with that added stress for another whole semester.
- 5) Students are still feeling the stress. Ask God to direct Christian students to have “God” appointments with non-Christian student.

## **Covid-19 Update:**

“Faculty, staff, students and visitors are welcomed back on college property at Youngwood campus, ATC, PSTC, Fayette, Indiana, Latrobe, Murrys ville and New Kensington Education centers on August 3 following CDC, PA DOH and college guidelines and policies.

Teaching for fall will be remote, online and on-ground, with further details, in consultation with the deans and faculty, forthcoming.”



# Byzantine Catholic Seminary Pittsburgh, PA



**This Campus Has NOT Been Adopted**

**Known Christian Groups on Campus:**  
NONE

DAY  
7

President (Rector) .....Fr. Robert M. Pipta  
Type .....4-year, Privat Non-Profit  
Campus Housing.....Yes  
Student Population.....36  
Student-to-Faculty Ratio.....Not Available



## **Covid-19 Update:**

“Due to the COVID-19 Pandemic, all non-academic formational activities at the Byzantine Catholic Seminary are now ending for the year. This means that our seminarians are now returning to their homes and will complete their academic curriculum and other academic requirements for this semester through distance learning.”

## Prayer Requests:

Remember to pray in the Spirit and ask God to show you how you should be praying for this school.

- 1) Once again we are praying Luke 10.2 *“The harvest is plentiful, but the laborers are few; therefore, beseech the Lord of the harvest to send out laborers into His harvest.”*
- 2) Most students are home for the winter break. Please pray that the Christian students will not forget about God during this time.
- 3) Pray for the Christmas season to be a natural, Christ centered, opportunity for Christian students to speak freely to their non-Christian family about Christ.
- 4) Pray for the return to school after winter break.
  - a) Ask God to prepare the Christian laborers for the new semester.
  - b) Please pray that Covid-19 will end soon. That the students would not have to put up with that added stress for another whole semester.
- 5) Students are still feeling the stress. Ask God to direct Christian students to have “God” appointments with non-Christian student.





# DeVry University Fort Washington, PA



**This Campus Has NOT Been Adopted**

DAY  
8

**Known Christian Groups on Campus:**  
NONE

Interim President.....Bill Caruso  
Type.....4-year, Private For-Profit  
Campus Housing.....No  
Student Population.....150  
Student-to-Faculty Ratio.....14 to 1



**Covid-19 Update:**  
“DeVry rapidly developed online skill building opportunities to make available to those in need or for those interested. We have leveraged our online strength to deliver flexible learning at your pace, to fit your life. If COVID-19 has impacted your job or career plan or you want to keep your skills up-to-date in the current market – start upskilling now.”

## Prayer Requests:

Remember to pray in the Spirit and ask God to show you how you should be praying for this school.

- 1) Once again we are praying Luke 10.2 *“The harvest is plentiful, but the laborers are few; therefore, beseech the Lord of the harvest to send out laborers into His harvest.”*
- 2) Most students are home for the winter break. Please pray that the Christian students will not forget about God during this time.
- 3) Pray for the Christmas season to be a natural, Christ centered, opportunity for Christian students to speak freely to their non-Christian family about Christ.
- 4) Pray for the return to school after winter break.
  - a) Ask God to prepare the Christian laborers for the new semester.
  - b) Please pray that Covid-19 will end soon. That the students would not have to put up with that added stress for another whole semester.
- 5) Students are still feeling the stress. Ask God to direct Christian students to have “God” appointments with non-Christian student.





# Eastern Mennonite University Lancaster, PA



**This Campus Has NOT Been Adopted**

DAY  
9

President ..... Susan Shultz Huxman  
Associate Provost Lancaster..... Mary Jensen  
Type ..... 4-year, Private Non-Profit  
Campus Housing ..... No  
Student Population..... 189  
Student-to-Faculty Ratio ..... 9 to 1



**Known Christian Groups on Campus:**  
NONE

## **Covid-19 Update:**

“In anticipation of the start of this new academic year and in compliance with our COVID-19 Re-Opening Plan, every student is required to complete the Health and Safety Training module that has been added to the Lancaster Student Orientation Moodle Course. ALL STUDENTS are required to complete the training, whether you are taking classes online or in person. No one will be allowed in the EMU at Lancaster facility for any reason without having completed the training. 2021 Virtual Commencement Date Friday, May 14, 2021 7:00pm.”

## Prayer Requests:

Remember to pray in the Spirit and ask God to show you how you should be praying for this school.

- 1) Once again we are praying Luke 10.2 *“The harvest is plentiful, but the laborers are few; therefore, beseech the Lord of the harvest to send out laborers into His harvest.”*
- 2) Most students are home for the winter break. Please pray that the Christian students will not forget about God during this time.
- 3) Pray for the Christmas season to be a natural, Christ centered, opportunity for Christian students to speak freely to their non-Christian family about Christ.
- 4) Pray for the return to school after winter break.
  - a) Ask God to prepare the Christian laborers for the new semester.
  - b) Please pray that Covid-19 will end soon. That the students would not have to put up with that added stress for another whole semester.
- 5) Students are still feeling the stress. Ask God to direct Christian students to have “God” appointments with non-Christian student.





# Eastern University Saint Davids, PA

President.....Ronald A. Matthews  
 Type .....4-year, Private Non-Profit  
 Campus Housing.....Yes  
 Student Population .....3,256  
 Student-to-Faculty Ratio.....10 to 1



## Prayer Requests:

Remember to pray in the Spirit and ask God to show you how you should be praying for this school.

- 1) Once again we are praying Luke 10.2 *“The harvest is plentiful, but the laborers are few; therefore, beseech the Lord of the harvest to send out laborers into His harvest.”*
- 2) Most students are home for the winter break. Please pray that the Christian students will not forget about God during this time.
- 3) Pray for the Christmas season to be a natural, Christ centered, opportunity for Christian students to speak freely to their non-Christian family about Christ.
- 4) Pray for the return to school after winter break.
  - a) Ask God to prepare the Christian laborers for the new semester.
  - b) Please pray that Covid-19 will end soon. That the students would not have to put up with that added stress for another whole semester.
- 5) Students are still feeling the stress. Ask God to direct Christian students to have “God” appointments with non-Christian student.



## This Campus Has Been Adopted By:

Main Line AG, Gladwyne, PA

DAY  
10

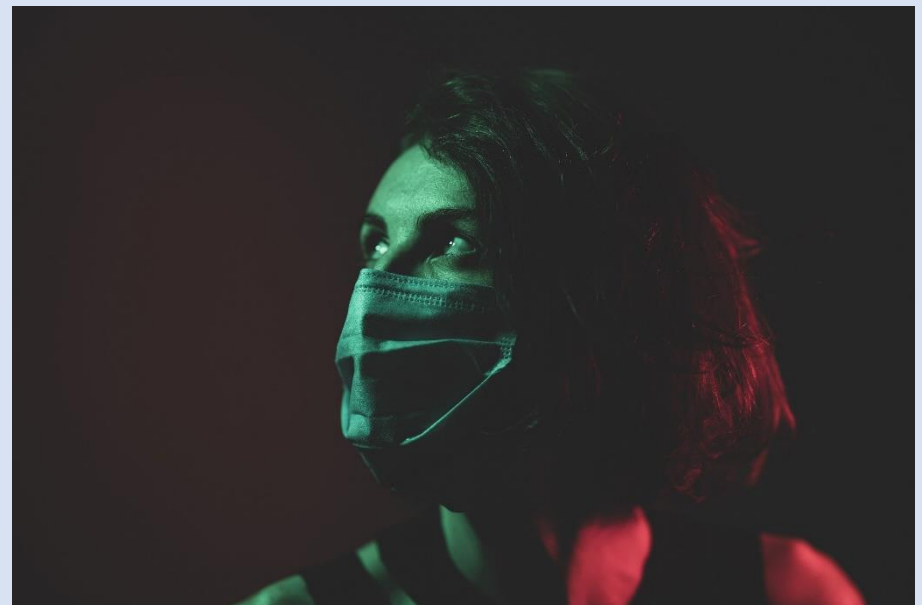
## Known Christian Groups on Campus:

University Chaplain ..... Joseph B. Modica  
 CRU..... ?  
 Fellowship of Christian Athletes..... ?  
 John Henry Newman Club ..... ?  
 Nurses Christian Fellowship ..... ?  
 One Generation ..... ?  
 Prison Ministry ..... ?  
 Student Chaplain Program ..... ?  
 Unceasing Prayer Ministry..... ?  
 Wednesday Night Worship ..... ?

## Covid-19 Update:

“Teaching Modalities: Face-to-Face, Hybrid and Online - Traditional Undergraduate Courses

- 50% of our traditional undergraduate classes will be offered in a face-to-face format.
- 25% of our classes will be offered in a fully online format, in order to serve students who prefer online instruction and to reduce classroom attendance densities.
- 25% of classes will be offered in a hybrid format--a blend of face-to-face and online.”



# Elizabethtown College

## Elizabethtown, PA



**This Campus Has Been Adopted By:**

Faith Outreach Center, Mt Joy, PA

DAY  
11

President ..... Cecilia M. McCormick  
Type ..... 4-year, Private Non-Profit  
Campus Housing..... Yes  
Student Population..... 1,687  
Student-to-Faculty Ratio..... 11 to 1



### **Known Christian Groups on Campus:**

Chaplain and Director of Religious Life ..... Amy Shorner-Johnson  
Better Together ..... ?  
Catholic Campus Ministry ..... ?  
CRU ..... ?  
InterVarsity Christian Fellowship ..... ?  
Lighthouse ..... ?

### **Covid-19 Update:**

“We have developed the following schedule for the Spring 2021 semester based on our campus climate and trends, state and federal guidelines as well as recommendations from the Centers for Disease Control (CDC) and other higher education and regional partners. As always, our schedule is subject to change based on the evolving pandemic, and we will communicate any changes as soon as we are able.

#### **Spring 2021 Semester Schedule**

- Jan. 23-31: Students Move-In
- Jan. 25: First day of classes. All classes begin remotely.
- Feb. 1: First day of In-person classes
- No Spring Break (Classes in session)
- April 2: Good Friday (No classes; College Holiday)
- May 6: Last day of classes
- May 8-12: Finals
- May 15-16: 2020 Commencement Ceremony (Details are forthcoming.)”

#### **Prayer Requests:**

Remember to pray in the Spirit and ask God to show you how you should be praying for this school.

- 1) Once again we are praying Luke 10.2 *“The harvest is plentiful, but the laborers are few; therefore, beseech the Lord of the harvest to send out laborers into His harvest.”*
- 2) Most students are home for the winter break. Please pray that the Christian students will not forget about God during this time.
- 3) Pray for the Christmas season to be a natural, Christ centered, opportunity for Christian students to speak freely to their non-Christian family about Christ.
- 4) Pray for the return to school after winter break.
  - a) Ask God to prepare the Christian laborers for the new semester.
  - b) Please pray that Covid-19 will end soon. That the students would not have to put up with that added stress for another whole semester.
- 5) Students are still feeling the stress. Ask God to direct Christian students to have “God” appointments with non-Christian student.





# Strayer University



**This Campus Has NOT Been Adopted**

DAY  
12

**Known Christian Groups on Campus:**  
NONE

Acting President.....Cale Holman  
Type .....4-year, Private For-Profit  
Campus Housing.....No  
Nationwide Student Population .....52,782  
Campuses Within Penn-Del Geography  
Wilmington, DE  
Allentown, PA  
Philadelphia, PA (Center City)  
Springfield, PA  
Feasterville-Treose, PA  
Warrendale, PA



## **Covid-19 Update:**

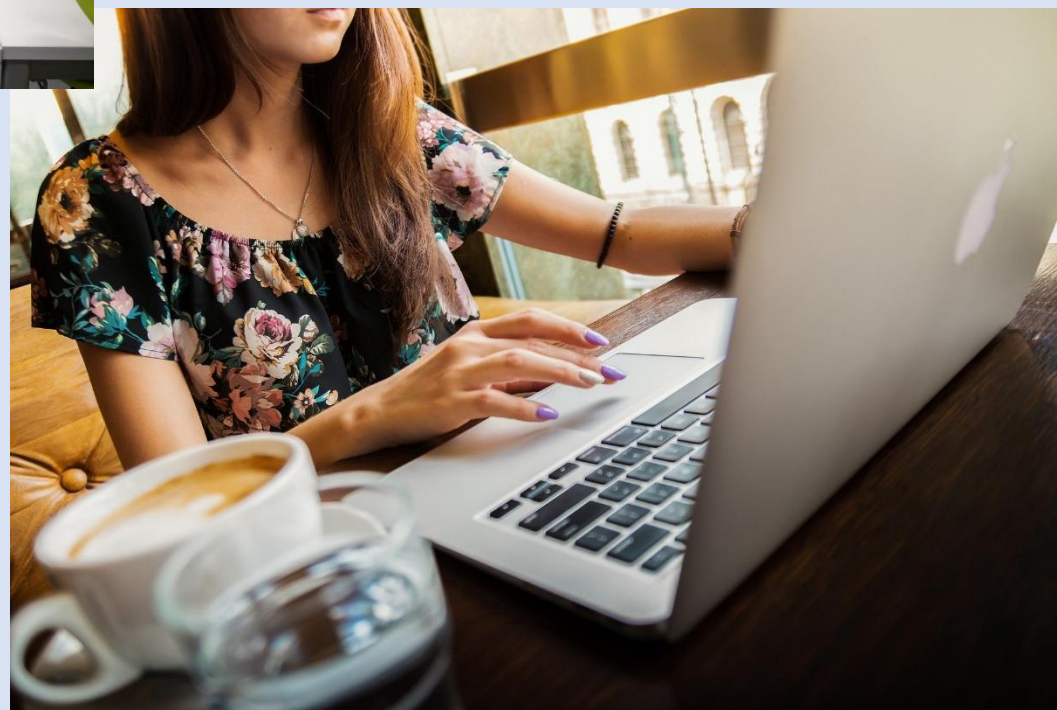
- **“Leaders in online learning:** With 93%\*\* of Strayer taking all classes online, Strayer University is uniquely designed to teach and support online learning.
- **On-campus classes:** We have transitioned all on-campus courses online for the Fall 2020 quarters....
- **Events:** We are postponing large events, including, but not limited to, upcoming Strayer University Commencement ceremonies....
- **Flexibility:** We have implemented enhanced work from home policies for all employees, including modified paid-time-off benefits.”



## Prayer Requests:

Remember to pray in the Spirit and ask God to show you how you should be praying for this school.

- 1) Once again we are praying Luke 10.2 *“The harvest is plentiful, but the laborers are few; therefore, beseech the Lord of the harvest to send out laborers into His harvest.”*
- 2) Most students are home for the winter break. Please pray that the Christian students will not forget about God during this time.
- 3) Pray for the Christmas season to be a natural, Christ centered, opportunity for Christian students to speak freely to their non-Christian family about Christ.
- 4) Pray for the return to school after winter break.
  - a) Ask God to prepare the Christian laborers for the new semester.
  - b) Please pray that Covid-19 will end soon. That the students would not have to put up with that added stress for another whole semester.
- 5) Students are still feeling the stress. Ask God to direct Christian students to have “God” appointments with non-Christian student.



# Geisinger Commonwealth School of Medicine Scranton, PA



**This Campus Has NOT Been Adopted**

DAY  
13

**Known Christian Groups on Campus:**

Christian Medical and Dental Association.....?

**Covid-19 Update:**

“Geisinger Commonwealth School of Medicine (GCSOM) recognizes that students and their applications may be impacted by the COVID-19 pandemic. As we enter the 2021 application cycle, the Admissions Committee is committed to assisting applicants. We are aware that many undergraduate and graduate institutions have moved their spring 2020 and summer 2020 courses to an online format. Though we typically do not accept courses taken in this format, the Admissions Committee has made an exception for these semesters due to COVID-19. In addition, we will also accept pass/fail grades for the semesters impacted by COVID-19. The Admissions Committee is also aware that Medical College Admission Test (MCAT) testing dates have been cancelled and/or postponed. The Association of American Medical Colleges (AAMC) is providing updates and guidance to medical schools, and we will continue to monitor the situation as it relates to established deadlines for the 2021 application cycle.”

President ..... Kurt J. Wrobel  
Type ..... 4-year, Private Non-Profit  
Campus Housing..... No  
Student Population..... 529  
Student-to-Faculty Ratio..... Unavailable



**Prayer Requests:**

Remember to pray in the Spirit and ask God to show you how you should be praying for this school.

- 1) Once again we are praying Luke 10.2 *“The harvest is plentiful, but the laborers are few; therefore, beseech the Lord of the harvest to send out laborers into His harvest.”*
- 2) Most students are home for the winter break. Please pray that the Christian students will not forget about God during this time.
- 3) Pray for the Christmas season to be a natural, Christ centered, opportunity for Christian students to speak freely to their non-Christian family about Christ.
- 4) Pray for the return to school after winter break.
  - a) Ask God to prepare the Christian laborers for the new semester.
  - b) Please pray that Covid-19 will end soon. That the students would not have to put up with that added stress for another whole semester.
- 5) Students are still feeling the stress. Ask God to direct Christian students to have “God” appointments with non-Christian student.





# Albright College Reading, PA



## This Campus Has NOT Been Adopted

DAY  
14

### Known Christian Groups on Campus:

Christian Chaplain ..... Mel Sesening  
Christian Chaplain ..... Ibrahim Bangura  
Albright Christian Fellowship ..... Janae Taft  
Praise Dance Ministry ..... Imani Walker

President.....Jacquelyn S. Fetrow  
Type .....4-year, Private Non-Profit  
Campus Housing.....Yes  
Student Population.....1,934  
Student-to-Faculty Ratio.....15 to 1



### Covid-19 Update:

“1) Shorter terms with fewer courses each term will allow more opportunity for social distancing in classes and will enable strict attention to sanitizing in between classes. 2) This schedule will allow greater flexibility with decisions to move on- or off-campus as dictated by the prevalence of the coronavirus and the potential for incidence and spread. 3) This model affords the highest potential for student success, which is always one of our highest priorities. Educational research shows that greater focus on fewer courses helps to reduce attention fatigue – that drag toward the end of a long semester. So whether we’re on-campus or online, it’s easier for students to maintain focus over seven weeks than it is over 15 weeks.”

### Prayer Requests:

Remember to pray in the Spirit and ask God to show you how you should be praying for this school.

- 1) Once again we are praying Luke 10.2 *“The harvest is plentiful, but the laborers are few; therefore, beseech the Lord of the harvest to send out laborers into His harvest.”*
- 2) Most students are home for the winter break. Please pray that the Christian students will not forget about God during this time.
- 3) Pray for the Christmas season to be a natural, Christ centered, opportunity for Christian students to speak freely to their non-Christian family about Christ.
- 4) Pray for the return to school after winter break.
  - a) Ask God to prepare the Christian laborers for the new semester.
  - b) Please pray that Covid-19 will end soon. That the students would not have to put up with that added stress for another whole semester.
- 5) Students are still feeling the stress. Ask God to direct Christian students to have “God” appointments with non-Christian student.





# Allegheny College Meadville, PA



**This Campus Has NOT Been Adopted**

DAY  
15

## **Known Christian Groups on Campus:**

Allegheny Christian Outreach .....Will Crosby  
Fellowship of Christian Athletes .....Victoria Vradenburg  
Newman Association .....Stephanie Bramwell  
Sojourners Christian Fellowship.....Elijah Van Vlack

President.....Hilary L. Link  
Type .....4-year, Private Non-Profit  
Campus Housing .....Yes  
Student Population .....1,771  
Student-to-Faculty Ratio.....10 to 1



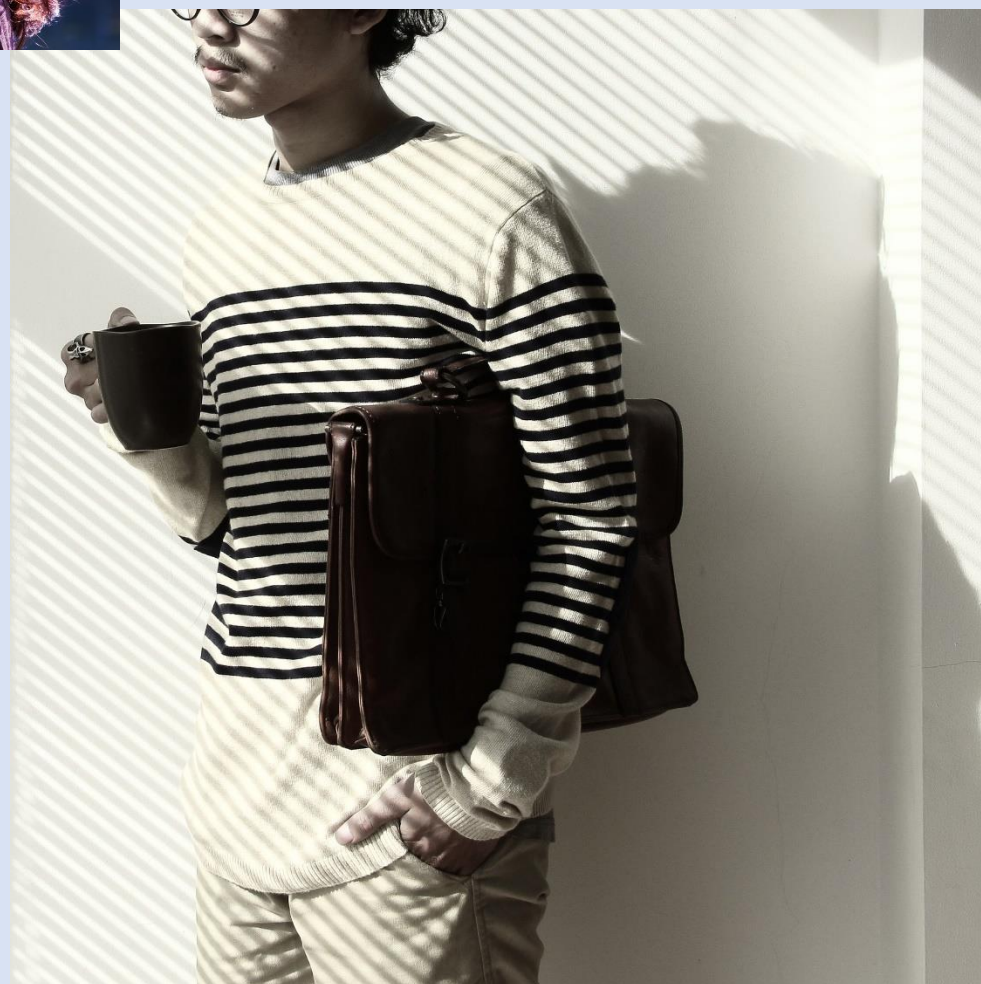
## **Covid-19 Update:**

“We are fully reopening for on-campus living and learning accompanied by, and subject to, ongoing guidance from the Pennsylvania Departments of Health and Education, federal agencies, pandemic and disaster management experts, and public health, epidemiological, scientific and medical experts.”

## Prayer Requests:

Remember to pray in the Spirit and ask God to show you how you should be praying for this school.

- 1) Once again we are praying Luke 10.2 *“The harvest is plentiful, but the laborers are few; therefore, beseech the Lord of the harvest to send out laborers into His harvest.”*
- 2) Most students are home for the winter break. Please pray that the Christian students will not forget about God during this time.
- 3) Pray for the Christmas season to be a natural, Christ centered, opportunity for Christian students to speak freely to their non-Christian family about Christ.
- 4) Pray for the return to school after winter break.
  - a) Ask God to prepare the Christian laborers for the new semester.
  - b) Please pray that Covid-19 will end soon. That the students would not have to put up with that added stress for another whole semester.
- 5) Students are still feeling the stress. Ask God to direct Christian students to have “God” appointments with non-Christian student.





# The American College of Financial Services

## King of Prussia, PA



**This Campus Has NOT Been Adopted**

**Known Christian Groups on Campus:**  
NONE

DAY  
16

President.....George Nichols III  
Type .....4-year, Private Non-Profit  
Campus Housing.....No  
Student Population.....9,594  
Student-to-Faculty Ratio.....223 to 1



### **Covid-19 Update:**

“During a historic market disruption, you need the confidence knowledge provides. The American College of Financial Services is here to help. In this time of unprecedented change, we’re working to provide valuable insight and expertise that can change people’s lives for the better. We’ve compiled essential information from our thought leaders, faculty, and industry experts to assist advisors and their clients during this period of uncertainty.”

### **Prayer Requests:**

Remember to pray in the Spirit and ask God to show you how you should be praying for this school.

- 1) Once again we are praying Luke 10.2 *“The harvest is plentiful, but the laborers are few; therefore, beseech the Lord of the harvest to send out laborers into His harvest.”*
- 2) Most students are home for the winter break. Please pray that the Christian students will not forget about God during this time.
- 3) Pray for the Christmas season to be a natural, Christ centered, opportunity for Christian students to speak freely to their non-Christian family about Christ.
- 4) Pray for the return to school after winter break.
  - a) Ask God to prepare the Christian laborers for the new semester.
  - b) Please pray that Covid-19 will end soon. That the students would not have to put up with that added stress for another whole semester.
- 5) Students are still feeling the stress. Ask God to direct Christian students to have “God” appointments with non-Christian student.





# Franklin & Marshall College Lancaster, PA



**This Campus Has Been Adopted By:**

First AG, Lancaster, PA

DAY  
17

## **Known Christian Groups on Campus:**

Agape Christian Fellowship ..... Rita Dong  
Diplomat Christian Fellowship ..... Cole L. Benfatti  
InterVarsity Christian Fellowship ..... Mario J. Mercado  
John Newman Association ..... Liliane G. Watkins

## **Covid-19 Update:**

“IMPORTANT: As of November 12, 2020, the F&M campus has transitioned to the High Alert Level and has implemented new risk-mitigation strategies, including the suspension of in-person social events and activities. Students may continue to attend in-person classes and go to campus dining services.

- Barring major unforeseen changes on the local or national level, the F&M campus will open for spring term.
- In order to minimize travel away from campus, there will be **no spring break**. Module 4 classes begin March 22.”

President..... Barbara K. Altmann  
Type ..... 4-year, Private Non-Profit  
Campus Housing ..... Yes  
Student Population ..... 2,309  
Student-to-Faculty Ratio ..... 9 to 1



## Prayer Requests:

Remember to pray in the Spirit and ask God to show you how you should be praying for this school.

- 1) Once again we are praying Luke 10.2 *“The harvest is plentiful, but the laborers are few; therefore, beseech the Lord of the harvest to send out laborers into His harvest.”*
- 2) Most students are home for the winter break. Please pray that the Christian students will not forget about God during this time.
- 3) Pray for the Christmas season to be a natural, Christ centered, opportunity for Christian students to speak freely to their non-Christian family about Christ.
- 4) Pray for the return to school after winter break.
  - a) Ask God to prepare the Christian laborers for the new semester.
  - b) Please pray that Covid-19 will end soon. That the students would not have to put up with that added stress for another whole semester.
- 5) Students are still feeling the stress. Ask God to direct Christian students to have “God” appointments with non-Christian student.





# Gannon University Erie, PA

President.....Keith Taylor  
Type .....4-year, Private Non-Profit  
Campus Housing.....Yes  
Student Population.....4,291  
Student-to-Faculty Ratio.....13 to 1



**This Campus Has Been Adopted By:**  
Albion AG, Albion, PA

DAY  
18

## **Known Christian Groups on Campus:**

Restore (Non-Denominational)..... ?  
Director of Campus Ministry .....Brent D. Heckman  
Residence Minister/Retreat Coordinator. Julie L. Iacobucci  
Chaplain .....Father Jason A. Glover  
Ministries under the Chaplain and Campus Ministry  
Bible Studies..... Various  
Ichthi.....Mary Margaret Brady  
Fellowship of Student-Athletes  
Men's and Women's Groups  
Living Person Group  
Metanoia  
First-Year Retreat  
Busy Person's Retreat  
Men's and Women's Retreat  
Senior Retreat  
Jubilee  
Theology on Tap  
Thew Well



## Prayer Requests:

Remember to pray in the Spirit and ask God to show you how you should be praying for this school.

- 1) Once again we are praying Luke 10.2 *"The harvest is plentiful, but the laborers are few; therefore, beseech the Lord of the harvest to send out laborers into His harvest."*
- 2) Most students are home for the winter break. Please pray that the Christian students will not forget about God during this time.
- 3) Pray for the Christmas season to be a natural, Christ centered, opportunity for Christian students to speak freely to their non-Christian family about Christ.
- 4) Pray for the return to school after winter break.
  - a) Ask God to prepare the Christian laborers for the new semester.
  - b) Please pray that Covid-19 will end soon. That the students would not have to put up with that added stress for another whole semester.
- 5) Students are still feeling the stress. Ask God to direct Christian students to have "God" appointments with non-Christian student.

## **Covid-19 Update:**

### "COVID-19 RESPONSE

Open with Classes On-Campus

No matter what your winter break plans are, we will follow up with specific instructions on how to start the spring semester safely for all students, faculty and staff.

This process will depend greatly on CDC and Erie County Department of Health guidelines as a result of the dynamic COVID-19 situation. Please continue to monitor [update.gannon.edu](http://update.gannon.edu) for important information regarding your safe return to campus over the coming weeks and throughout winter break."

# Bryn Athyn College

(New Church/The Swedenborgian Church)

## Bryn Athyn, PA



President ..... Brian Blair  
Type ..... 4-year, Private Non-Profit  
Campus Housing ..... Yes  
Student Population ..... 330  
Student-to-Faculty Ratio ..... 6 to 1



### Prayer Requests:

Remember to pray in the Spirit and ask God to show you how you should be praying for this school.

- 1) Once again we are praying Luke 10.2 *“The harvest is plentiful, but the laborers are few; therefore, beseech the Lord of the harvest to send out laborers into His harvest.”*
- 2) Most students are home for the winter break. Please pray that the Christian students will not forget about God during this time.
- 3) Pray for the Christmas season to be a natural, Christ centered, opportunity for Christian students to speak freely to their non-Christian family about Christ.
- 4) Pray for the return to school after winter break.
  - a) Ask God to prepare the Christian laborers for the new semester.
  - b) Please pray that Covid-19 will end soon. That the students would not have to put up with that added stress for another whole semester.
- 5) Students are still feeling the stress. Ask God to direct Christian students to have “God” appointments with non-Christian student.

### This Campus Has NOT Been Adopted

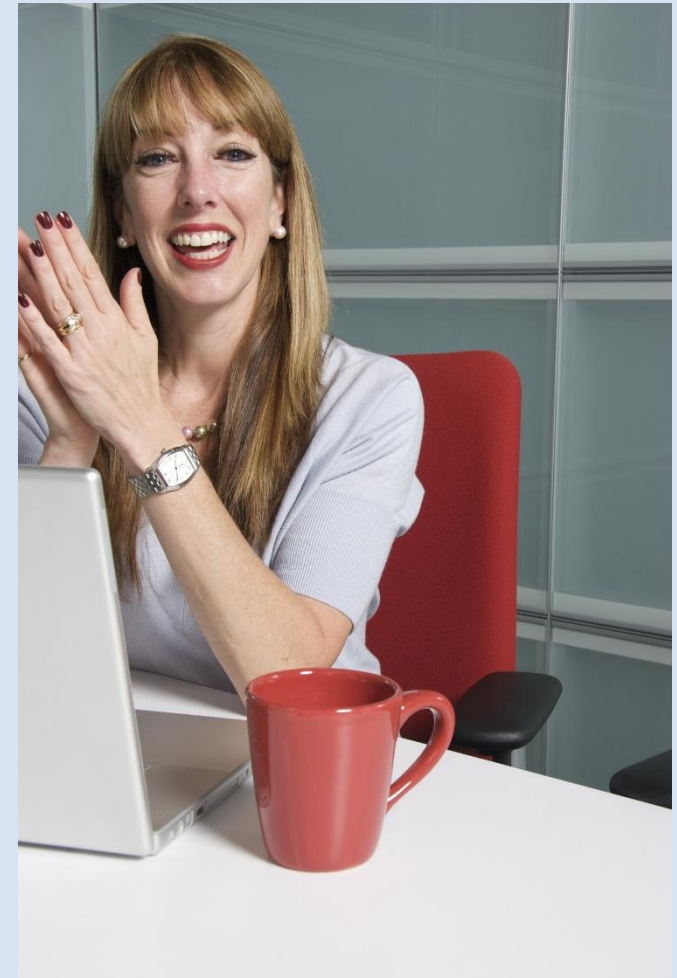
DAY  
19

### Known Christian Groups on Campus:

Chaplain ..... Grant Schnarr  
Assistant Chaplain ..... Coleman Glenn

### Covid-19 Update:

“All students need to fill out the daily symptom screener. Please fill this form out within an hour of expected arrival to our campus. Resident Students should fill the form out each morning regardless of having classes or not that day. Everyone coming to campus must take their temperature within one hour of arriving on campus.”





# Bryn Mawr College Bryn Mawr, PA



**This Campus Has Been Adopted By:**  
Main Line AG, Gladwyne, PA

DAY  
20

President ..... Kim Cassidy  
Type ..... 4-year, Private Non-Profit  
Campus Housing..... Yes  
Student Population..... 1.690  
Student-to-Faculty Ratio..... 9 to 1



## **Known Christian Groups on Campus:**

Harvest Christian Fellowship..... Kai McGinn  
InterVarsity Christian Fellowship..... Joan Ndichu  
Newman Catholic Campus Ministry..... Katherine Santarpia

## **Covid-19 Update:**

“We know that you need to begin planning for spring 2021. Today, we can share a broad-stroke timeline for the spring semester, to be followed soon by more details. ... To continue to follow current public health guidelines, which seem likely to be in effect this spring, the Group approved an extension of the Bi-College’s current educational approach along with the following key dates:

- Friday, January 29: First Day of Class
- Friday, January 29-Sunday, February 14: All Classes Remote
- Thursday, April 29: Last Day of Class
- Friday, April 30-Saturday, May 8: Reading Days and Finals
- Saturday, May 15: Commencement

To allow for a controlled return and any necessary quarantines, we will stagger student move-in as we did this fall.”

## **Prayer Requests:**

Remember to pray in the Spirit and ask God to show you how you should be praying for this school.

- 1) Once again we are praying Luke 10.2 *“The harvest is plentiful, but the laborers are few; therefore, beseech the Lord of the harvest to send out laborers into His harvest.”*
- 2) Most students are home for the winter break. Please pray that the Christian students will not forget about God during this time.
- 3) Pray for the Christmas season to be a natural, Christ centered, opportunity for Christian students to speak freely to their non-Christian family about Christ.
- 4) Pray for the return to school after winter break.
  - a) Ask God to prepare the Christian laborers for the new semester.
  - b) Please pray that Covid-19 will end soon. That the students would not have to put up with that added stress for another whole semester.
- 5) Students are still feeling the stress. Ask God to direct Christian students to have “God” appointments with non-Christian student.





# Cedar Crest College Allentown, PA



## This Campus Has Been Adopted By:

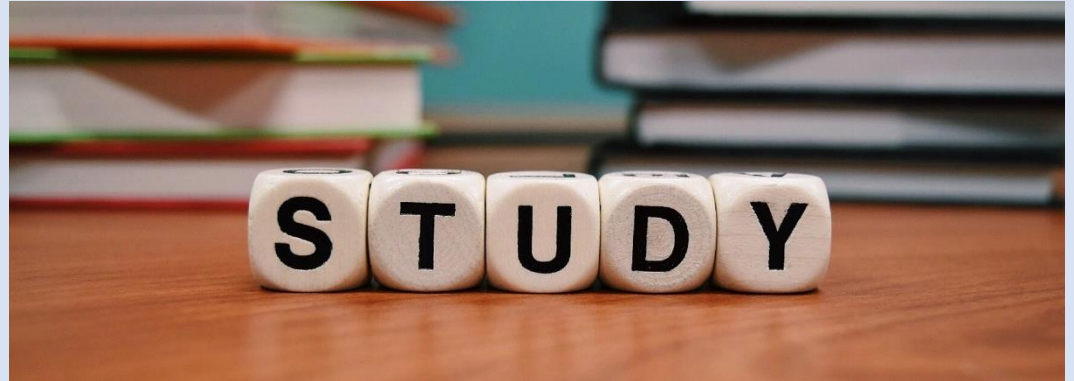
Emmanuel AG, Allentown, PA

DAY  
21

## Known Christian Groups on Campus:

Chaplain ..... Allen Richardson  
Disciple Makers Christian Fellowship.....?

President ..... Elizabeth Meade  
Type ..... 4-year, Private Non-Profit  
Campus Housing ..... Yes  
Student Population..... 1,596  
Student-to-Faculty Ratio ..... 10 to 1



## Covid-19 Update:

“Winter term will be completely online, and the spring 2021 semester schedule will be determined in the fall based on the status of the pandemic in the state of Pennsylvania, the amount of community spread of COVID-19, and the consideration of the health and safety of our students, faculty, and staff.”

## Prayer Requests:

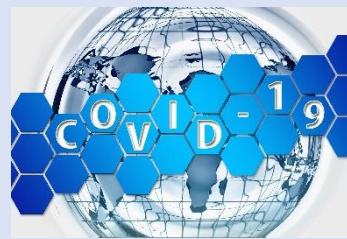
Remember to pray in the Spirit and ask God to show you how you should be praying for this school.

- 1) Once again we are praying Luke 10.2 *“The harvest is plentiful, but the laborers are few; therefore, beseech the Lord of the harvest to send out laborers into His harvest.”*
- 2) Most students are home for the winter break. Please pray that the Christian students will not forget about God during this time.
- 3) Pray for the Christmas season to be a natural, Christ centered, opportunity for Christian students to speak freely to their non-Christian family about Christ.
- 4) Pray for the return to school after winter break.
  - a) Ask God to prepare the Christian laborers for the new semester.
  - b) Please pray that Covid-19 will end soon. That the students would not have to put up with that added stress for another whole semester.
- 5) Students are still feeling the stress. Ask God to direct Christian students to have “God” appointments with non-Christian student.





# Central Penn College Summerdale, PA



**This Campus Has Been Adopted By:**

River of God Church, Enola, PA

DAY  
22

**Known Christian Groups on Campus:**

Campus Christian Ministries ..... ?

## **Covid-19 Update:**

**“Start of Winter Term** – The first two weeks of Winter term will be completely remote for **all students**. We will return to face-to-face instruction on Jan. 19, 2021.”



## Prayer Requests:

Remember to pray in the Spirit and ask God to show you how you should be praying for this school.

- 1) Once again we are praying Luke 10.2 *“The harvest is plentiful, but the laborers are few; therefore, beseech the Lord of the harvest to send out laborers into His harvest.”*
- 2) Most students are home for the winter break. Please pray that the Christian students will not forget about God during this time.
- 3) Pray for the Christmas season to be a natural, Christ centered, opportunity for Christian students to speak freely to their non-Christian family about Christ.
- 4) Pray for the return to school after winter break.
  - a) Ask God to prepare the Christian laborers for the new semester.
  - b) Please pray that Covid-19 will end soon. That the students would not have to put up with that added stress for another whole semester.
- 5) Students are still feeling the stress. Ask God to direct Christian students to have “God” appointments with non-Christian student.



# Geneva College Beaver Falls, PA



**This Campus Has NOT Been Adopted**

DAY  
23

President.....Calvin L. Troup  
Type .....4-year, Private Non-Profit  
Campus Housing .....Yes  
Student Population .....1,543  
Student-to-Faculty Ratio.....12 to 1



## **Known Christian Groups on Campus:**

Campus Ministry Coordinator .....Caleb Musselman  
Campus Ministry Fellow .....Elizabeth Bell  
Programs of Campus Ministry  
    Discipleship Groups  
    Fellowship Groups  
    Chapel Service

## **Covid-19 Update:**

“COVID-19 Alert Status: Moderate  
Campus is open fully or partially with additional, elevated risk mitigation measures in place in targeted areas.  
Increase efforts to decrease your personal exposure by reducing group interactions and increasing surface and environment cleaning. Maximum capacities in rooms may be decreased.”

## Prayer Requests:

Remember to pray in the Spirit and ask God to show you how you should be praying for this school.

- 1) Once again we are praying Luke 10.2 *“The harvest is plentiful, but the laborers are few; therefore, beseech the Lord of the harvest to send out laborers into His harvest.”*
- 2) Most students are home for the winter break. Please pray that the Christian students will not forget about God during this time.
- 3) Pray for the Christmas season to be a natural, Christ centered, opportunity for Christian students to speak freely to their non-Christian family about Christ.
- 4) Pray for the return to school after winter break.
  - a) Ask God to prepare the Christian laborers for the new semester.
  - b) Please pray that Covid-19 will end soon. That the students would not have to put up with that added stress for another whole semester.
- 5) Students are still feeling the stress. Ask God to direct Christian students to have “God” appointments with non-Christian student.





# Chatham University Pittsburgh, PA

President..... David Finegold  
Type.....4-year Private Non-Profit  
Campus Housing..... Yes  
Student Population..... 2,336  
Student-to-Faculty Ratio..... 10 to 1



**This Campus Has NOT Been Adopted**

**Known Christian Groups on Campus:**  
NONE

DAY  
24

## **Covid-19 Update:**

- “Classes begin: January 6, 2021
- Virtual class delivery: January 11 – 17
- In-person instruction begins: January 19
- Classes end: April 23, 2021
- We will be requiring all students—including students living off campus—to shelter in place prior to or upon arrival at Chatham. Students will only be permitted to attend classes in person once their 14-day shelter-in-place period is complete. As a result, some students may need to make appropriate arrangements with their faculty after in-person classes have begun.
- Courses will be delivered in three primary formats: classroom, virtual, and online (as was done in the fall term).”



## Prayer Requests:

Remember to pray in the Spirit and ask God to show you how you should be praying for this school.

- 1) Once again we are praying Luke 10.2 *“The harvest is plentiful, but the laborers are few; therefore, beseech the Lord of the harvest to send out laborers into His harvest.”*
- 2) Most students are home for the winter break. Please pray that the Christian students will not forget about God during this time.
- 3) Pray for the Christmas season to be a natural, Christ centered, opportunity for Christian students to speak freely to their non-Christian family about Christ.
- 4) Pray for the return to school after winter break.
  - a) Ask God to prepare the Christian laborers for the new semester.
  - b) Please pray that Covid-19 will end soon. That the students would not have to put up with that added stress for another whole semester.
- 5) Students are still feeling the stress. Ask God to direct Christian students to have “God” appointments with non-Christian student.



# Chestnut Hill College Philadelphia, PA



President ..... Carol Jean Vale  
Type ..... 4-year, Private Non-Profit  
Campus Housing ..... Yes  
Student Population ..... 1,794  
Student-to-Faculty Ratio ..... 10 to 1



## **This Campus Has NOT Been Adopted**

### **Known Christian Groups on Campus:**

Director of Campus Ministry ..... Jackie Newns  
Assistant ..... Julia Marcel  
Chaplain ..... Father Bob Mulligan  
Spirituality & Ministry ..... Sister Cathy Looker

### **Covid-19 Update:**

“It is important to note that in planning for Spring 2021, all courses offered in the Schools of Continuing and Professional Studies (Accelerated Adult Degree Program) and the School of Graduate Studies will be offered online. This decision will greatly reduce the overall number of students and faculty from what is typically on campus. While there may be infrequent times when students from SCPS and SGS need to come to campus, and the mitigation strategies described in this guide will apply to all individuals on campus, the majority of the information contained in this guide is specific to classes, co-curricular, and residential experiences being offered to students in the School of Undergraduate Studies.”

### Prayer Requests:

Remember to pray in the Spirit and ask God to show you how you should be praying for this school.

- 1) Once again we are praying Luke 10.2 *“The harvest is plentiful, but the laborers are few; therefore, beseech the Lord of the harvest to send out laborers into His harvest.”*
- 2) Most students are home for the winter break. Please pray that the Christian students will not forget about God during this time.
- 3) Pray for the Christmas season to be a natural, Christ centered, opportunity for Christian students to speak freely to their non-Christian family about Christ.
- 4) Pray for the return to school after winter break.
  - a) Ask God to prepare the Christian laborers for the new semester.
  - b) Please pray that Covid-19 will end soon. That the students would not have to put up with that added stress for another whole semester.
- 5) Students are still feeling the stress. Ask God to direct Christian students to have “God” appointments with non-Christian student.





# Clarks Summit University South Abington Township, PA

President..... James Lytle  
Type ..... 4-year, Private Non-Profit  
Campus Housing ..... Yes  
Student Population ..... 950  
Student-to-Faculty Ratio ..... 11 to 1



**This Campus Has NOT Been Adopted**

DAY  
26

## **Known Christian Groups on Campus:**

“At Clarks Summit University, we acknowledge that loving God cannot be coerced, so we look to provide students with a variety of opportunities to seek after God.”

## **Covid-19 Update:**

“Spring 2021 Semester Schedule

Key dates include:

January 11: Online classes begin

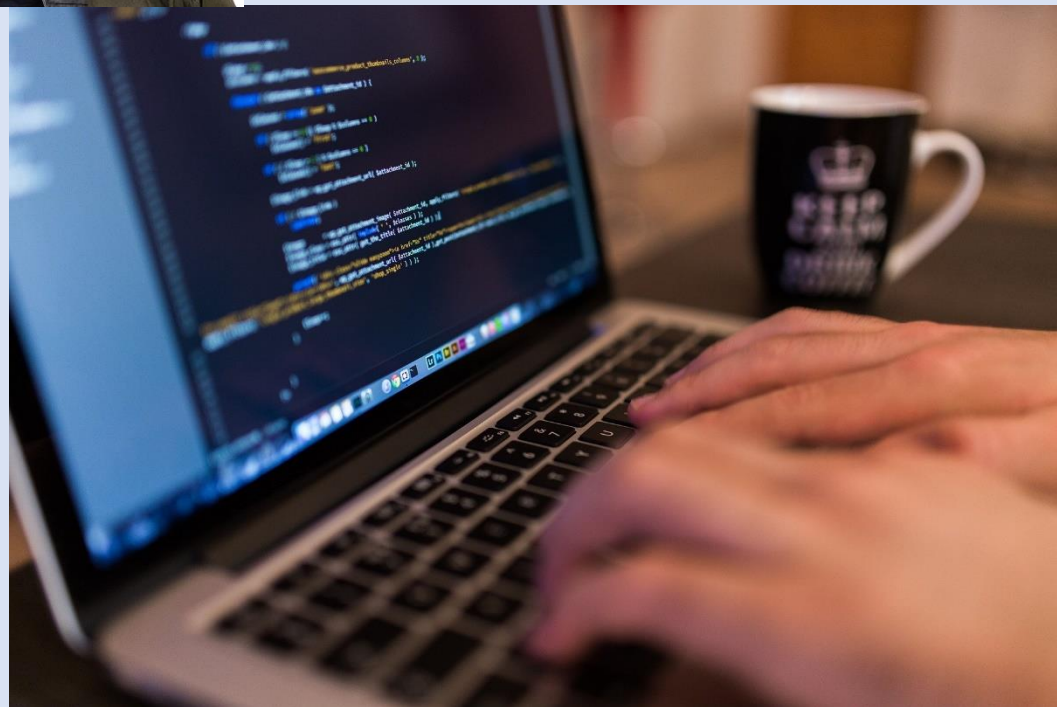
January 18: On-campus classes begin

- [LYFE Women's Conference](#) will be held in May 2021 with keynote speaker Sheila Walsh and award-winning artist Ginny Owens. [Watch the 2020 LYFE Simulcast for free!](#)
- The [Man Up!](#) 18-hour men's event will be held in 2021. Sports executive Pat Williams, formerly with the Orlando Magic, Chicago Bulls and Philadelphia 76ers, is the keynote speaker.”

## Prayer Requests:

Remember to pray in the Spirit and ask God to show you how you should be praying for this school.

- 1) Once again we are praying Luke 10.2 *“The harvest is plentiful, but the laborers are few; therefore, beseech the Lord of the harvest to send out laborers into His harvest.”*
- 2) Most students are home for the winter break. Please pray that the Christian students will not forget about God during this time.
- 3) Pray for the Christmas season to be a natural, Christ centered, opportunity for Christian students to speak freely to their non-Christian family about Christ.
- 4) Pray for the return to school after winter break.
  - a) Ask God to prepare the Christian laborers for the new semester.
  - b) Please pray that Covid-19 will end soon. That the students would not have to put up with that added stress for another whole semester.
- 5) Students are still feeling the stress. Ask God to direct Christian students to have “God” appointments with non-Christian student.



# Curtis Institute of Music Philadelphia, PA



**This Campus Has NOT Been Adopted**

DAY  
27

**Known Christian Groups on Campus:**  
NONE

President..... Roberto Díaz  
Type..... 4-year, Private Non-Profit  
Campus Housing ..... Yes  
Student Population ..... 171  
Student-to-Faculty Ratio ..... 2 to 1



## **Covid-19 Update:**

“December 23	Fall Semester Ends (10:00 p.m. ET)
Dec. 24 to Jan. 10	Winter Vacation
January 5	Resident Coordinators Move-In to Lenfest Hall (preliminary)
January 8	Faculty In-Service Day; Fall Report Card Ready in NetClassroom (Preliminary)
January 10	Lenfest Hall Reopens, 9:00 a.m. ET; Dining Services Resume with Dinner (Preliminary)
January 11	Spring Semester Begins (Preliminary)”

## Prayer Requests:

Remember to pray in the Spirit and ask God to show you how you should be praying for this school.

- 1) Once again we are praying Luke 10.2 *“The harvest is plentiful, but the laborers are few; therefore, beseech the Lord of the harvest to send out laborers into His harvest.”*
- 2) Most students are home for the winter break. Please pray that the Christian students will not forget about God during this time.
- 3) Pray for the Christmas season to be a natural, Christ centered, opportunity for Christian students to speak freely to their non-Christian family about Christ.
- 4) Pray for the return to school after winter break.
  - a) Ask God to prepare the Christian laborers for the new semester.
  - b) Please pray that Covid-19 will end soon. That the students would not have to put up with that added stress for another whole semester.
- 5) Students are still feeling the stress. Ask God to direct Christian students to have “God” appointments with non-Christian student.





# Delaware Valley University Doylestown, PA



**This Campus Has NOT Been Adopted**

DAY  
28

President.....Maria Gallo  
Type .....4-year, Private Non-Profit  
Campus Housing.....Yes  
Student Population.....2,428  
Student-to-Faculty Ratio.....13 to 1

## **Known Christian Groups on Campus:**

Catholic Newman Club..... Abigail Stauffer  
Fellowship of Christian Athletes..... Christian Anderson  
Impact..... Olivia Gorman



## **Covid-19 Update:**

“No decisions have yet been made about the Spring 2021 semester. We will continue to monitor public health and communicate decisions when they are made.”



## **Prayer Requests:**

Remember to pray in the Spirit and ask God to show you how you should be praying for this school.

- 1) Once again we are praying Luke 10.2 *“The harvest is plentiful, but the laborers are few; therefore, beseech the Lord of the harvest to send out laborers into His harvest.”*
- 2) Most students are home for the winter break. Please pray that the Christian students will not forget about God during this time.
- 3) Pray for the Christmas season to be a natural, Christ centered, opportunity for Christian students to speak freely to their non-Christian family about Christ.
- 4) Pray for the return to school after winter break.
  - a) Ask God to prepare the Christian laborers for the new semester.
  - b) Please pray that Covid-19 will end soon. That the students would not have to put up with that added stress for another whole semester.
- 5) Students are still feeling the stress. Ask God to direct Christian students to have “God” appointments with non-Christian student.



# DeSales University Center Valley, PA



President.....James Greenfield  
Type.....4-year, Private Non-Profit  
Campus Housing ..... Yes  
Student Population ..... 3,438  
Student-to-Faculty Ratio ..... 14 to 1



**This Campus Has Been Adopted By:**  
Epic Church AG, Lehigh Valley, PA

DAY  
29

**Known Christian Groups on Campus:**  
Chaplain.....Daniel Lannen  
Bible Study .....Shea Elliot  
Bible Study .....Sarah Knop  
Campus Ministry .....Elizabeth Ruth  
DeSales Christian Fellowship.....Marissa Shores

## **Covid-19 Update:**

“Important dates for our undergraduate traditional day students.

Please note: academic calendars are subject to change as our knowledge and understanding of COVID-19 continues to evolve.

January 31, Sunday  
February 1, Monday  
May 7, Friday  
May 10-15, Mon-Sat

Residence Halls move in  
First day of class  
Last day of class  
Final exams

## Prayer Requests:

Remember to pray in the Spirit and ask God to show you how you should be praying for this school.

- 1) Once again we are praying Luke 10.2 *“The harvest is plentiful, but the laborers are few; therefore, beseech the Lord of the harvest to send out laborers into His harvest.”*
- 2) Most students are home for the winter break. Please pray that the Christian students will not forget about God during this time.
- 3) Pray for the Christmas season to be a natural, Christ centered, opportunity for Christian students to speak freely to their non-Christian family about Christ.
- 4) Pray for the return to school after winter break.
  - a) Ask God to prepare the Christian laborers for the new semester.
  - b) Please pray that Covid-19 will end soon. That the students would not have to put up with that added stress for another whole semester.
- 5) Students are still feeling the stress. Ask God to direct Christian students to have “God” appointments with non-Christian student.





# Dickinson College Carlisle, PA



President.....Margee Ensign  
Type .....4-year, Private For-Profit  
Campus Housing.....Yes  
Student Population.....2,399  
Student-to-Faculty Ratio.....9 to 1



## Prayer Requests:

Remember to pray in the Spirit and ask God to show you how you should be praying for this school.

- 1) Once again we are praying Luke 10.2 *"The harvest is plentiful, but the laborers are few; therefore, beseech the Lord of the harvest to send out laborers into His harvest."*
- 2) Most students are home for the winter break. Please pray that the Christian students will not forget about God during this time.
- 3) Pray for the Christmas season to be a natural, Christ centered, opportunity for Christian students to speak freely to their non-Christian family about Christ.
- 4) Pray for the return to school after winter break.
  - a) Ask God to prepare the Christian laborers for the new semester.
  - b) Please pray that Covid-19 will end soon. That the students would not have to put up with that added stress for another whole semester.
- 5) Students are still feeling the stress. Ask God to direct Christian students to have "God" appointments with non-Christian student.



## This Campus Has Been Adopted By:

Bethel AG, Carlisle, PA

DAY  
30

## Known Christian Groups on Campus:

Dickinson Christian Fellowship .....  
.....Elizabeth & Andrew Berg (Advisors)  
Dickinson College Catholic Ministry ..... Aidan Birth  
Korean Bible Study ..... Jinnie Yoo

## Covid-19 Update:

"The campus will be closed from December 13 through January 2... Also, with our reopening plans well underway, we are beginning the process of contacting furloughed employees to provide information on their return-to-work dates. These dates are closely linked to the college's current plans to allow students to return to campus for the spring semester. It should be noted that if the pandemic continues to escalate and requires any change to our current spring semester plans, these return dates may be impacted. Please note that it remains our intent to provide the maximum amount of notice possible, however the 30-day notice previously provided for employment decisions may not always be feasible."



# Duquesne University Pittsburgh, PA



President ..... Ken Gormley  
 Type ..... 4-year, Private Non-Profit  
 Campus Housing..... Yes  
 Student Population..... 9,274  
 Student-to-Faculty Ratio..... 13 to 1



## Prayer Requests:

Remember to pray in the Spirit and ask God to show you how you should be praying for this school.

- 1) Once again we are praying Luke 10.2 *"The harvest is plentiful, but the laborers are few; therefore, beseech the Lord of the harvest to send out laborers into His harvest."*
- 2) Most students are home for the winter break. Please pray that the Christian students will not forget about God during this time.
- 3) Pray for the Christmas season to be a natural, Christ centered, opportunity for Christian students to speak freely to their non-Christian family about Christ.
- 4) Pray for the return to school after winter break.
  - a) Ask God to prepare the Christian laborers for the new semester.
  - b) Please pray that Covid-19 will end soon. That the students would not have to put up with that added stress for another whole semester.
- 5) Students are still feeling the stress. Ask God to direct Christian students to have "God" appointments with non-Christian student.

**This Campus Has NOT Been Adopted**

DAY  
31

## **Known Christian Groups on Campus:**

Director of Campus Ministry/Chaplain  
 ..... Father Bill Christy  
 Campus Minister ..... Linda Donovan  
 Campus Minister ..... Father Vince Stegman  
 Campus Minister ..... Giovan Cuchapin  
 Campus Minister ..... Debbie Kostosky  
 Campus Minister ..... Brenda Merrick  
 Crossroads Christian Fellowship ..... Carissa Haslam  
 Delight Ministries ..... Jenna Crouch  
 Nurses Christian Fellowship ..... Meghan McCarthy  
 Opus Novum Catholic Charismatic . Allison Guerrette  
 Orthodox Christian Fellowship ..... Gavrielia Constantine  
 Society of St. Vincent de Paul ..... Rebecca LaCroix  
 Young Life ..... Madeline Cagnina

## **Covid-19 Update:**

"For the spring semester, classes will resume on Thursday, January 21, 2021, allowing plenty of time for students to again limit outside contact for 14 days prior to returning to campus. That safety precaution served all of us well for our fall return and we expect it will have a similar preventive effect for our return for the spring semester. We will provide more detail about that soon."

